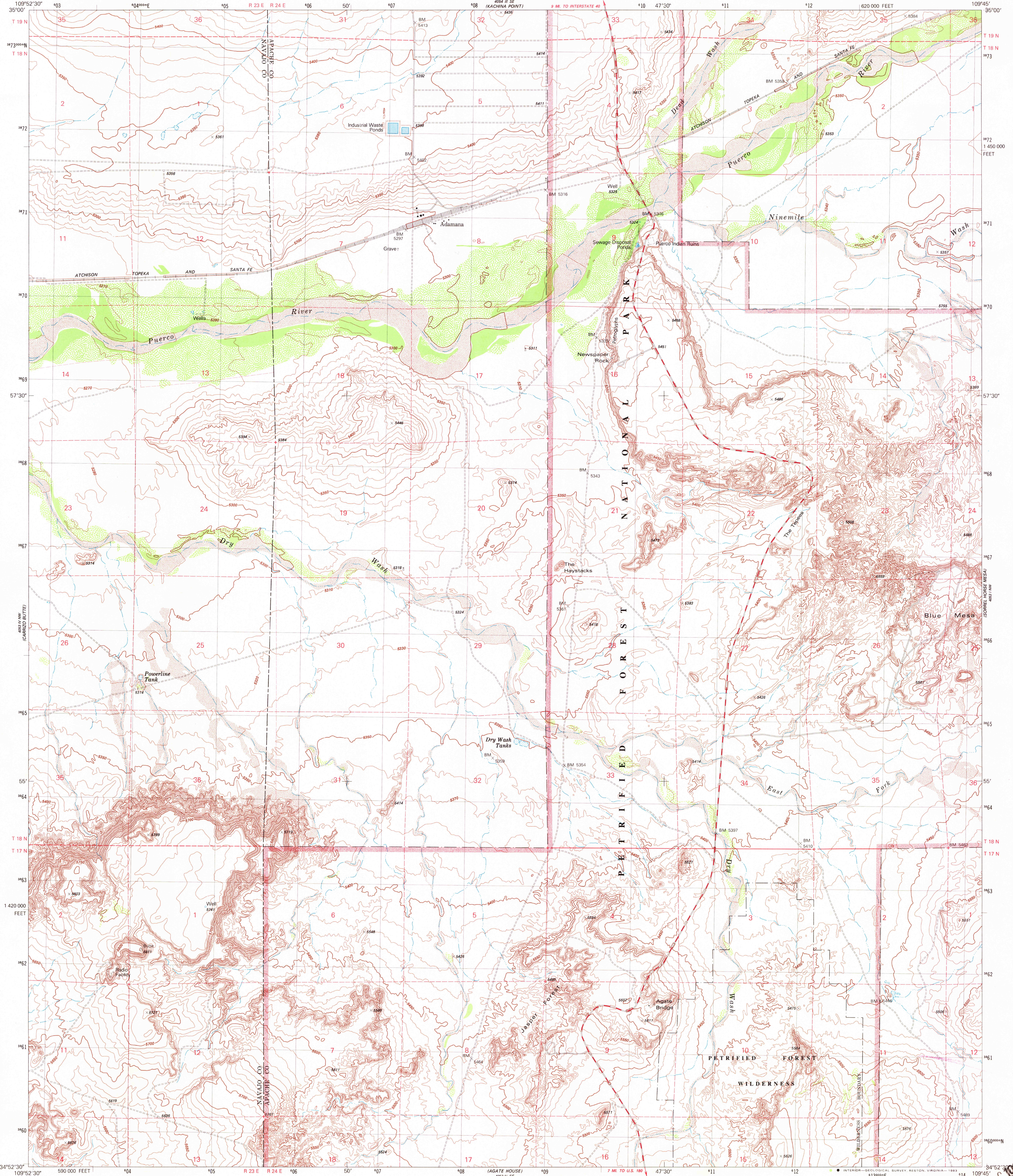


UNITED STATES
DEPARTMENT OF THE INTERIOR
GEOLOGICAL SURVEY

ADAMANA QUADRANGLE
ARIZONA
7.5 MINUTE SERIES (TOPOGRAPHIC)
NE/4 PETRIFIED FOREST 15' QUADRANGLE



Mapped, edited, and published by the Geological Survey

Control by USGS and NOS/NOAA

Topography by photogrammetric methods from aerial photographs taken 1974. Field checked 1976. Map edited 1982

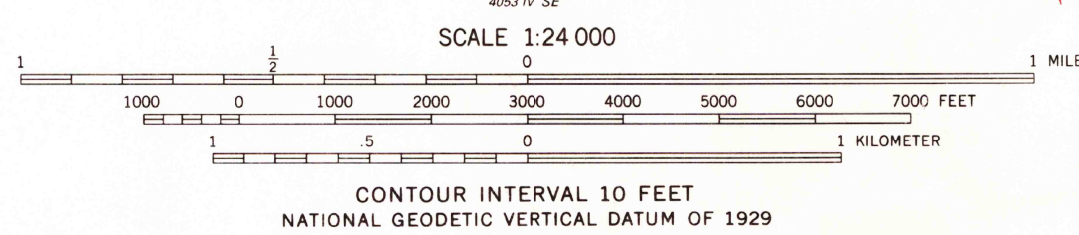
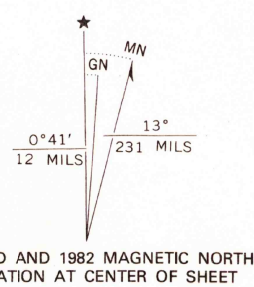
Projection and 10,000-foot grid ticks: Arizona coordinate system, east zone (transverse Mercator)

1000-meter Universal Transverse Mercator grid, zone 12

To place on the predicted North American Datum 1983 move the projection lines 60 meters east as shown by dashed corner ticks

Fine red dashed lines indicate selected fence and field lines where generally visible on aerial photographs. This information is unchecked

There may be private inholdings within the boundaries of the National or State reservations shown on this map



| ROAD CLASSIFICATION | |
|---------------------------------|---|
| Primary highway, hard surface | Light-duty road, hard or improved surface |
| Secondary highway, hard surface | Unimproved road |
| Interstate Route | U. S. Route |
| | State Route |

ADAMANA, ARIZ.
NE/4 PETRIFIED FOREST 15' QUADRANGLE
N3452.5-W10945.7.5

1982

DMA 4053 IV NE-SERIES V988

RETURN TO:
NHD HISTORICAL MAP ARCHIVES
USGS NATIONAL CENTER, MS-522
RESTON, VA 22092