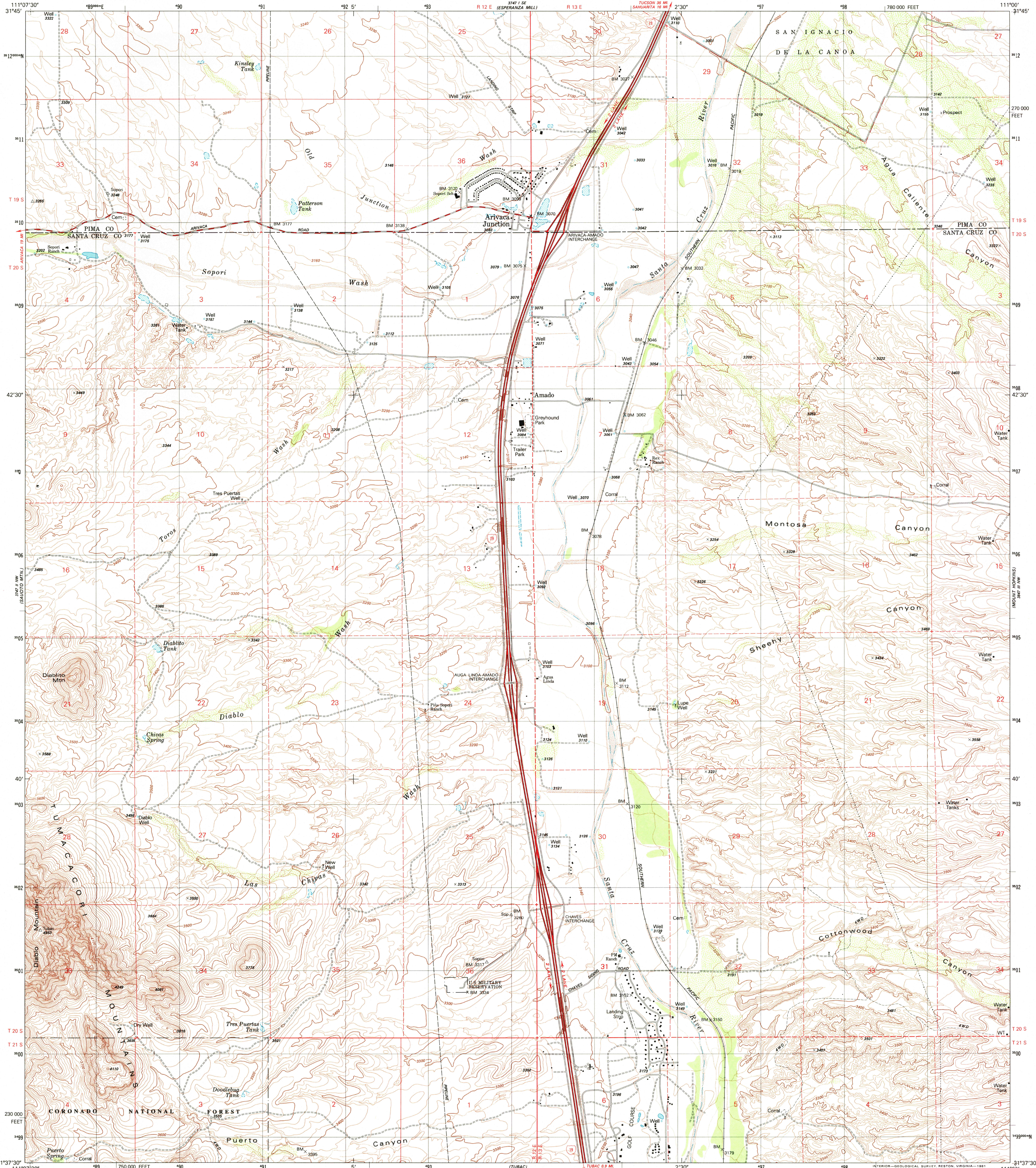


UNITED STATES  
DEPARTMENT OF THE INTERIOR  
GEOLOGICAL SURVEY

AMADO QUADRANGLE  
ARIZONA  
7.5 MINUTE SERIES (TOPOGRAPHIC)  
NE/4 TUBAC 15' QUADRANGLE



Mapped, edited, and published by the Geological Survey

Control by USGS and NOS/NOAA

Topography by photogrammetric methods from aerial photographs  
taken 1975. Field checked 1976. Map edited 1981

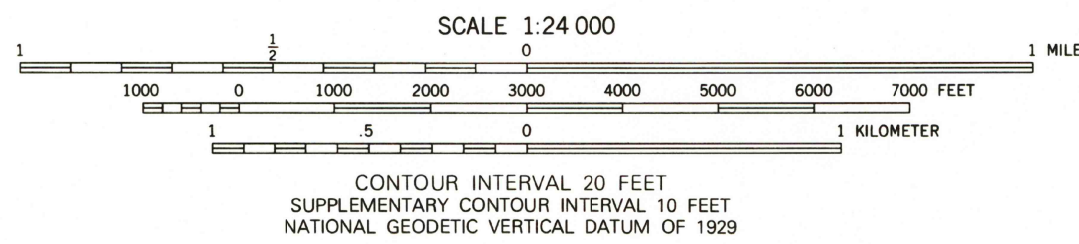
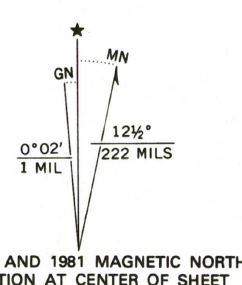
Projection and 10,000-foot grid ticks: Arizona coordinate  
system, central zone (transverse Mercator)

1000-meter Universal Transverse Mercator grid, zone 12  
1927 North American Datum

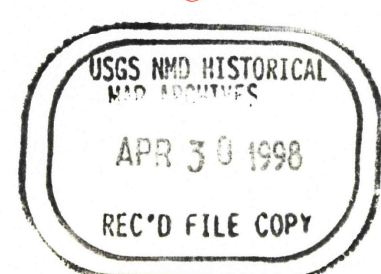
To place on the predicted North American Datum 1983  
move the projection lines 8 meters south and  
62 meters east as shown by dashed corner ticks

Fine red dashed lines indicate selected fence and field lines where  
generally visible on aerial photographs. This information is unchecked

There may be private inholdings within the boundaries of  
the National or State reservations shown on this map



ROAD CLASSIFICATION  
Primary highway, hard surface  
Secondary highway, hard surface  
Light-duty road, hard or improved surface  
Unimproved road  
Interstate Route  
U. S. Route  
State Route



AMADO, ARIZ.  
NE/4 TUBAC 15' QUADRANGLE  
N3137.5-W111007.5

1981

DMA 3747 II NE-SERIES V898

THIS MAP COMPLIES WITH NATIONAL MAP ACCURACY STANDARDS  
FOR SALE BY U.S. GEOLOGICAL SURVEY, P.O. BOX 25286, DENVER, COLORADO 80225  
A FOLDER DESCRIBING TOPOGRAPHIC MAPS AND SYMBOLS IS AVAILABLE ON REQUEST

