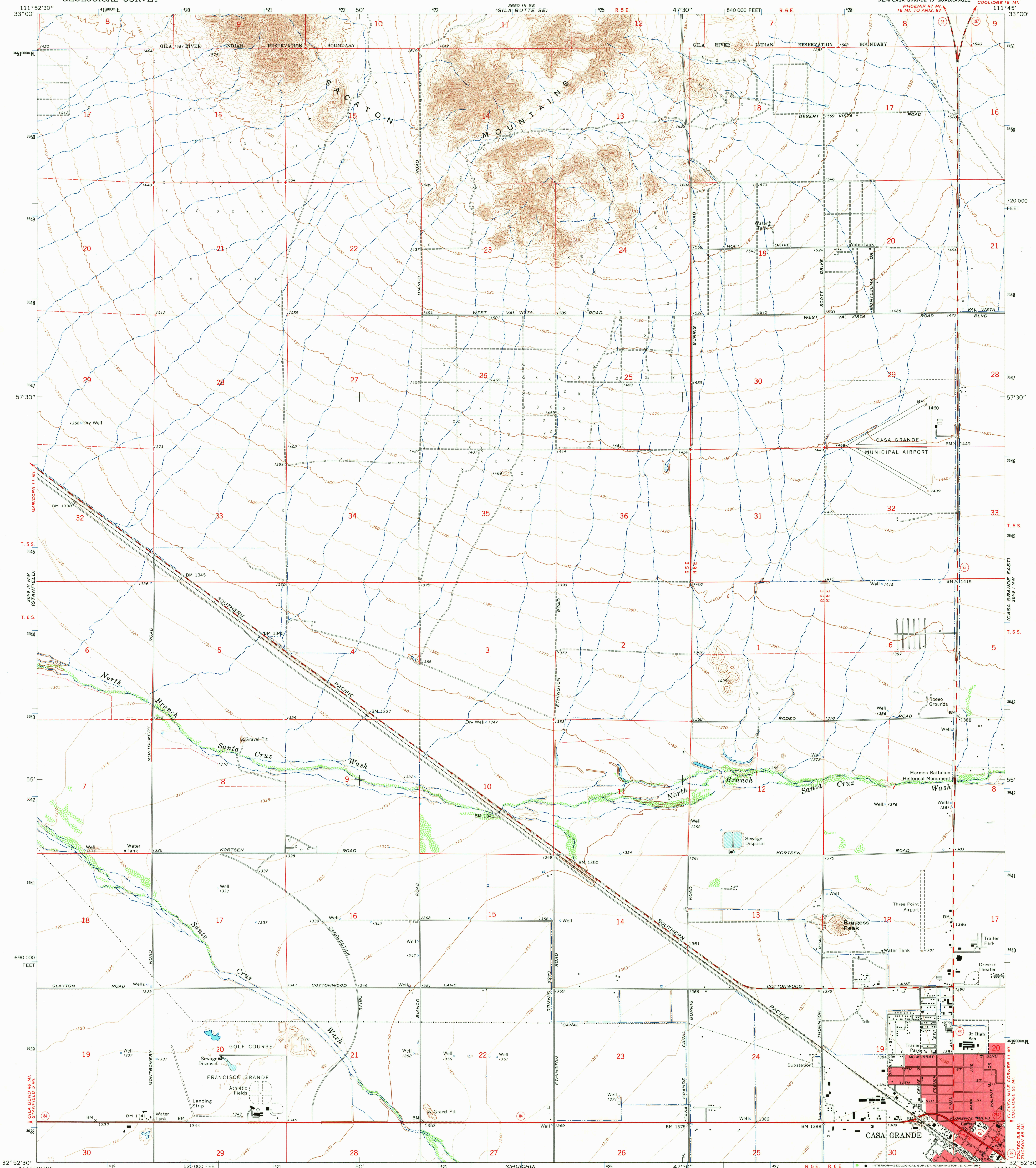


UNITED STATES  
DEPARTMENT OF THE INTERIOR  
GEOLOGICAL SURVEY

CASA GRANDE WEST QUADRANGLE  
ARIZONA-PINAL CO.  
7.5 MINUTE SERIES (TOPOGRAPHIC)



Mapped, edited, and published by the Geological Survey

Control by USGS and USC&GS

Topography by photogrammetric methods from aerial

photographs taken 1963 and planetable surveys 1965

Polyconic projection. 1927 North American datum

10,000-foot grid based on Arizona coordinate system, central zone

1000-meter Universal Transverse Mercator grid ticks,

zone 12, shown in blue

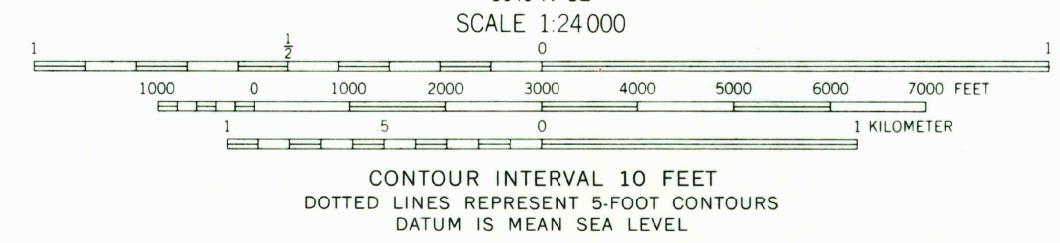
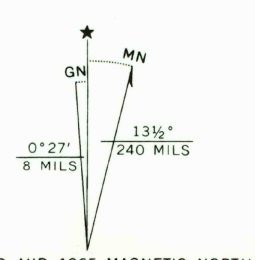
Red tint indicates areas in which only landmark buildings are shown

Fine red dashed lines indicate selected fence lines

A portion of the southwest quarter of this map

lies within a subsidence area

Vertical control based on latest available adjustment



THIS MAP COMPLIES WITH NATIONAL MAP ACCURACY STANDARDS  
FOR SALE BY U. S. GEOLOGICAL SURVEY, DENVER, COLORADO 80225, OR WASHINGTON, D. C. 20242  
A FOLDER DESCRIBING TOPOGRAPHIC MAPS AND SYMBOLS IS AVAILABLE ON REQUEST

USGS  
Historical File  
Topographic Division



U.S.G.S.  
FILE COPY  
TOPOGRAPHIC DIVISION

ROAD CLASSIFICATION  
Heavy-duty ——— Light-duty ———  
Medium-duty ——— Unimproved dirt ———  
State Route ———

CASA GRANDE WEST, ARIZ.  
N3252.5—W11145.7/7.5

1965

AMS 3649 IV NE—SERIES V898

MAY 2 1967