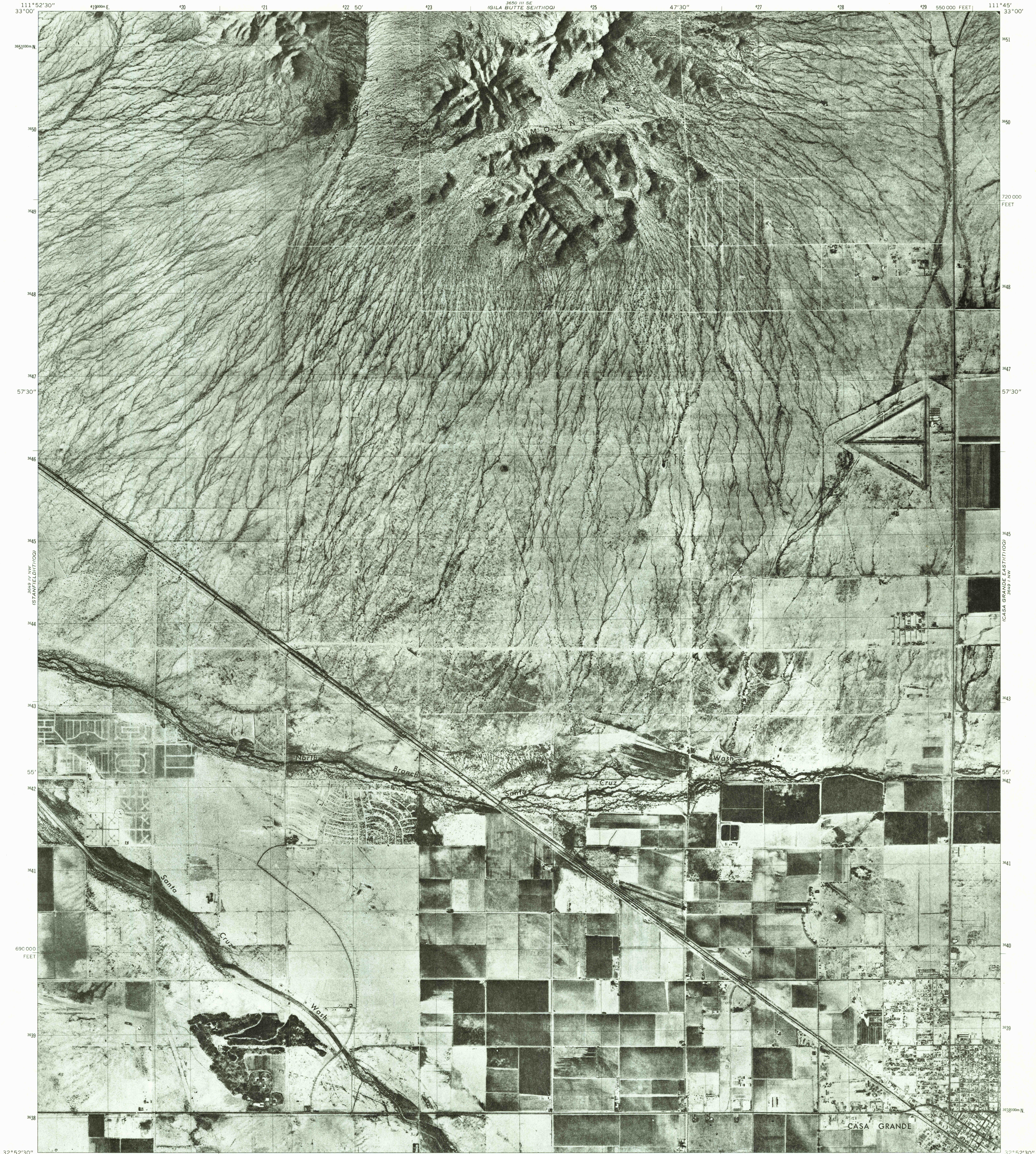
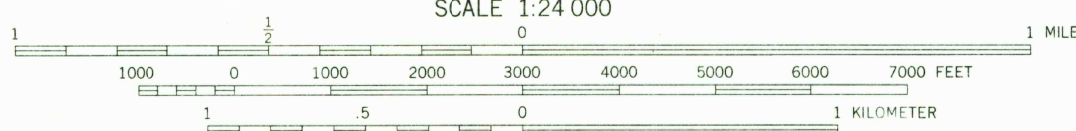
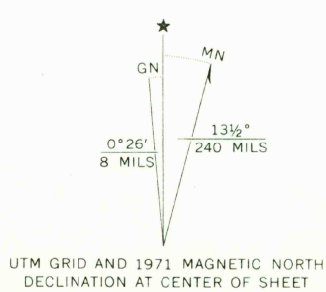


UNITED STATES
DEPARTMENT OF THE INTERIOR
GEOLOGICAL SURVEY

CASA GRANDE WEST QUADRANGLE
ARIZONA—PINAL CO.
7.5 MINUTE SERIES ORTHOPHOTOQUAD



Prepared and published by the Geological Survey
Controlled orthophotomosaic by photogrammetric methods
from 1:78 000-scale aerial photographs taken July 1971
Transverse Mercator projection. 1927 North American datum
1000-meter Universal Transverse Mercator grid, zone 12
10,000-foot grid ticks based on Arizona coordinate system,
central zone



THIS MAP COMPLIES WITH NATIONAL MAP ACCURACY STANDARDS
FOR SALE BY U. S. GEOLOGICAL SURVEY, DENVER, COLORADO 80225, OR WASHINGTON, D. C. 20242



This quadrangle area also covered by
1:24 000-scale standard topographic map
Adjoining map coverage:
(T) following quadrangle name indicates
standard topographic map available
(OQ) following quadrangle name indicates
orthophotoquad available

CASA GRANDE WEST, ARIZ.
N3252.5—W11145/7.5

1971

AMS 3649 IV NE—SERIES V888