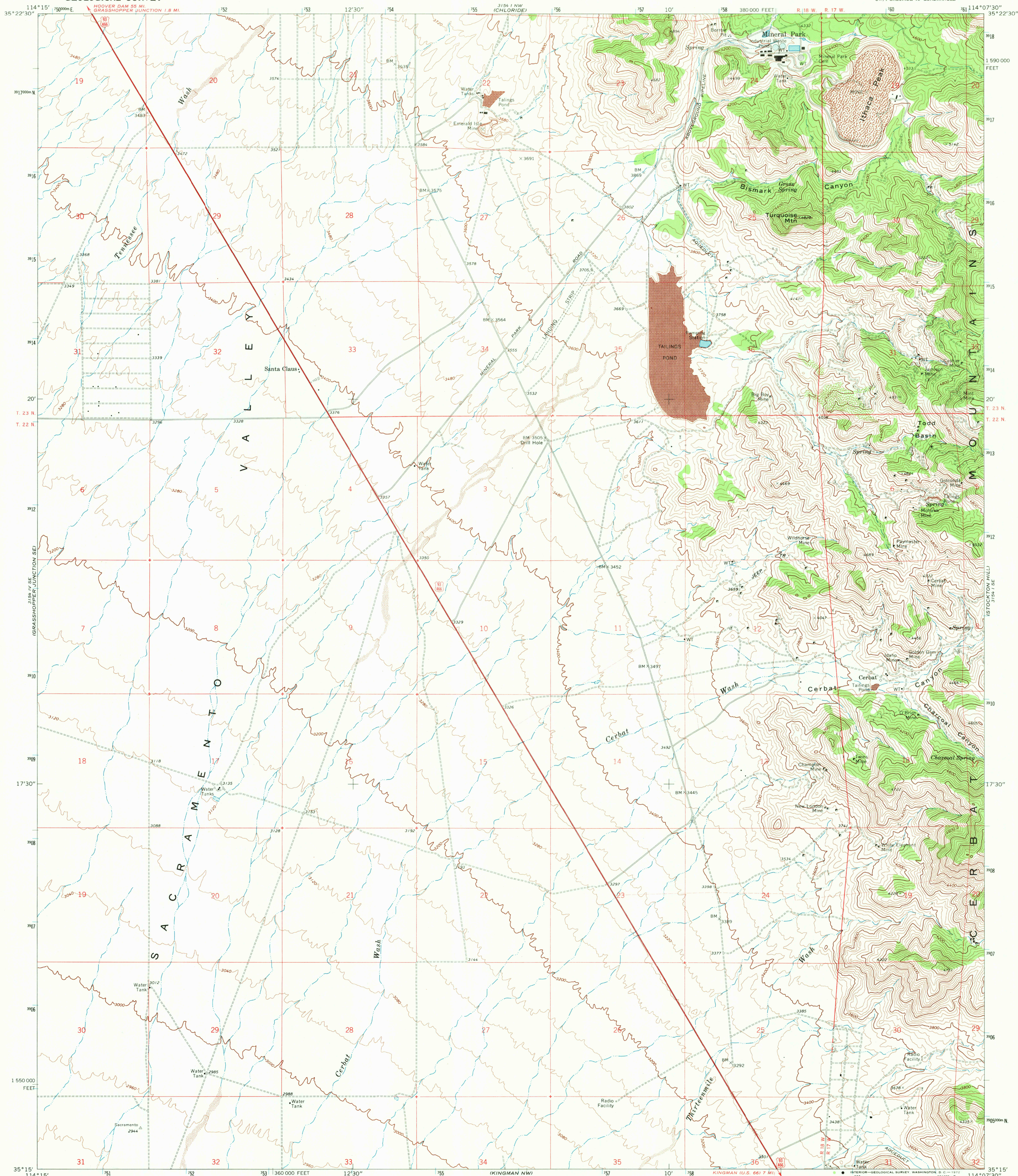


UNITED STATES  
DEPARTMENT OF THE INTERIOR  
GEOLOGICAL SURVEY

CERBAT QUADRANGLE  
ARIZONA—MOHAVE CO.  
7.5 MINUTE SERIES (TOPOGRAPHIC)  
SW 1/4 CHLORIDE 15' QUADRANGLE

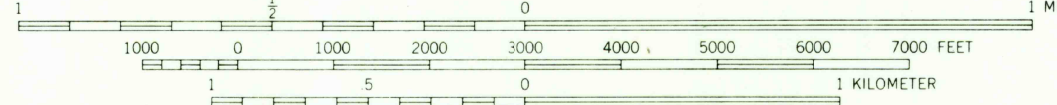
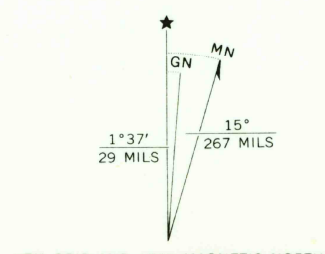


Mapped, edited, and published by the Geological Survey  
Control by USGS and USC&GS

Topography by photogrammetric methods from aerial  
photographs taken 1967. Field checked 1968

Polyconic projection. 1927 North American datum  
10,000-foot grid based on Arizona coordinate system, west zone  
1000-meter Universal Transverse Mercator grid ticks,  
zone 11, shown in blue

Fine red dashed lines indicate selected fence lines



CONTOUR INTERVAL 40 FEET  
DATUM IS MEAN SEA LEVEL

ROAD CLASSIFICATION  
Heavy-duty ——— Light-duty ———  
Unimproved dirt ———  
U.S. Route ———



USGS  
TOPOGRAPHIC DIVISION

CERBAT, ARIZ.  
SW 1/4 CHLORIDE 15' QUADRANGLE  
N3515—W11407.5/7.5

1968

AMS 3154 I SW—SERIES V898

THIS MAP COMPLIES WITH NATIONAL MAP ACCURACY STANDARDS  
FOR SALE BY U.S. GEOLOGICAL SURVEY, DENVER, COLORADO 80225, OR WASHINGTON, D. C. 20242  
A FOLDER DESCRIBING TOPOGRAPHIC MAPS AND SYMBOLS IS AVAILABLE ON REQUEST

DEC 14 1971  
2470