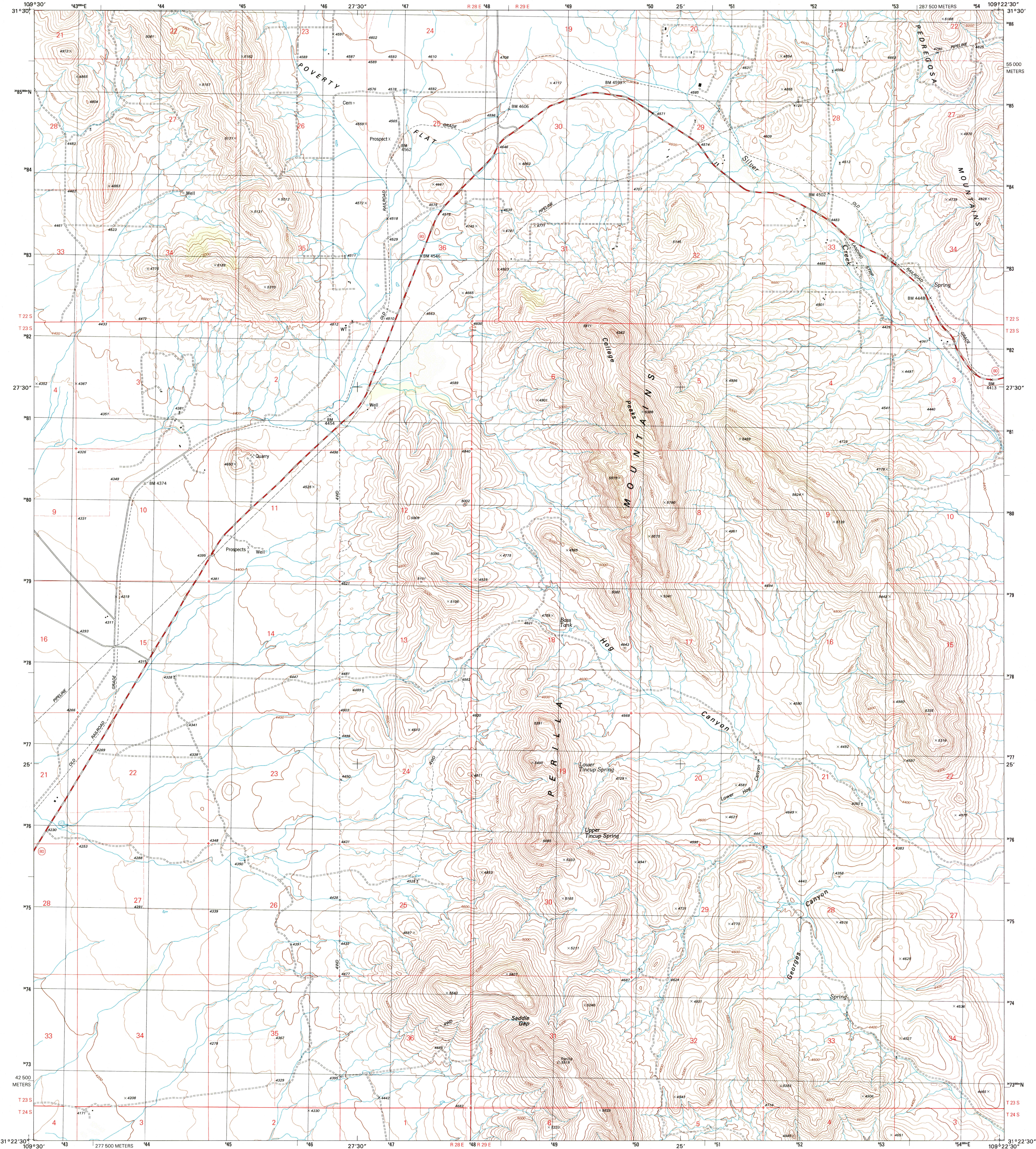


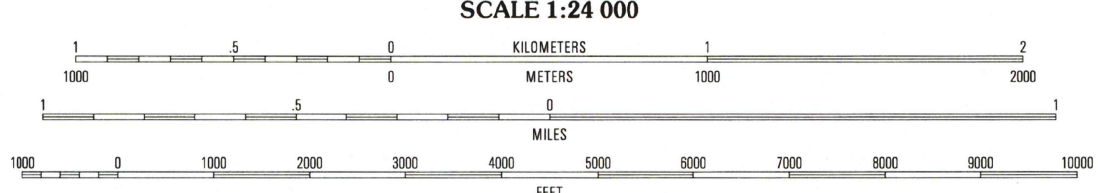
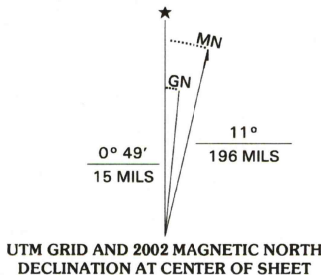


U.S. DEPARTMENT OF THE INTERIOR
U.S. GEOLOGICAL SURVEY

COLLEGE PEAKS QUADRANGLE
ARIZONA-COCHISE CO.
7.5-MINUTE SERIES (TOPOGRAPHIC)



Produced by the United States Geological Survey
Topography compiled 1956. Planimetry derived from imagery taken 1996 and other sources. Public Land Survey System and survey control current as of 1958. Boundaries current as of 2001.
North American Datum of 1983 (NAD 83). Projection and 1 000-meter grid: Universal Transverse Mercator, zone 12
2 500-meter ticks: Arizona Coordinate System of 1983 (east zone)
North American Datum of 1927 (NAD 27) is shown by dashed corner ticks. The values of the shift between NAD 83 and NAD 27 for 7.5-minute intersections are obtainable from National Geodetic Survey NADCON software
Houses of worship, schools, and other labeled buildings verified 1981



CONTOUR INTERVAL 40 FEET
NATIONAL GEODETIC VERTICAL DATUM OF 1929
(TO CONVERT ELEVATIONS TO THE NORTH AMERICAN VERTICAL DATUM OF 1988, ADD 3 FEET)
TO CONVERT FROM FEET TO METERS, MULTIPLY BY 0.3048

THIS MAP COMPLIES WITH NATIONAL MAP ACCURACY STANDARDS
FOR SALE BY U.S. GEOLOGICAL SURVEY, P.O. BOX 25286, DENVER, COLORADO 80225
A FOLDER DESCRIBING TOPOGRAPHIC MAPS AND SYMBOLS IS AVAILABLE ON REQUEST



QUADRANGLE LOCATION

1	2	3	1 Leslie Canyon 2 Pedregosa Mountains West 3 Pedregosa Mountains East
4		5	4 Douglas NE 5 Cinder Hill 6 Douglas
6	7	8	7 East of Douglas 8 San Bernardino Ranch

ADJOINING 7.5' QUADRANGLES

ROAD CLASSIFICATION
Primary highway
hard surface
Secondary highway
hard surface
Light-duty road, hard or
improved surface
Unimproved road
Interstate Route
U.S. Route
State Route

RECEIVED
AUG 2 8 2003
JCS MND
TOPOLMAP ARCHIVE

JUN 04 2003
COLLEGE PEAKS, AZ
1996
NIMA 4146 IV NW-SERIES V898

