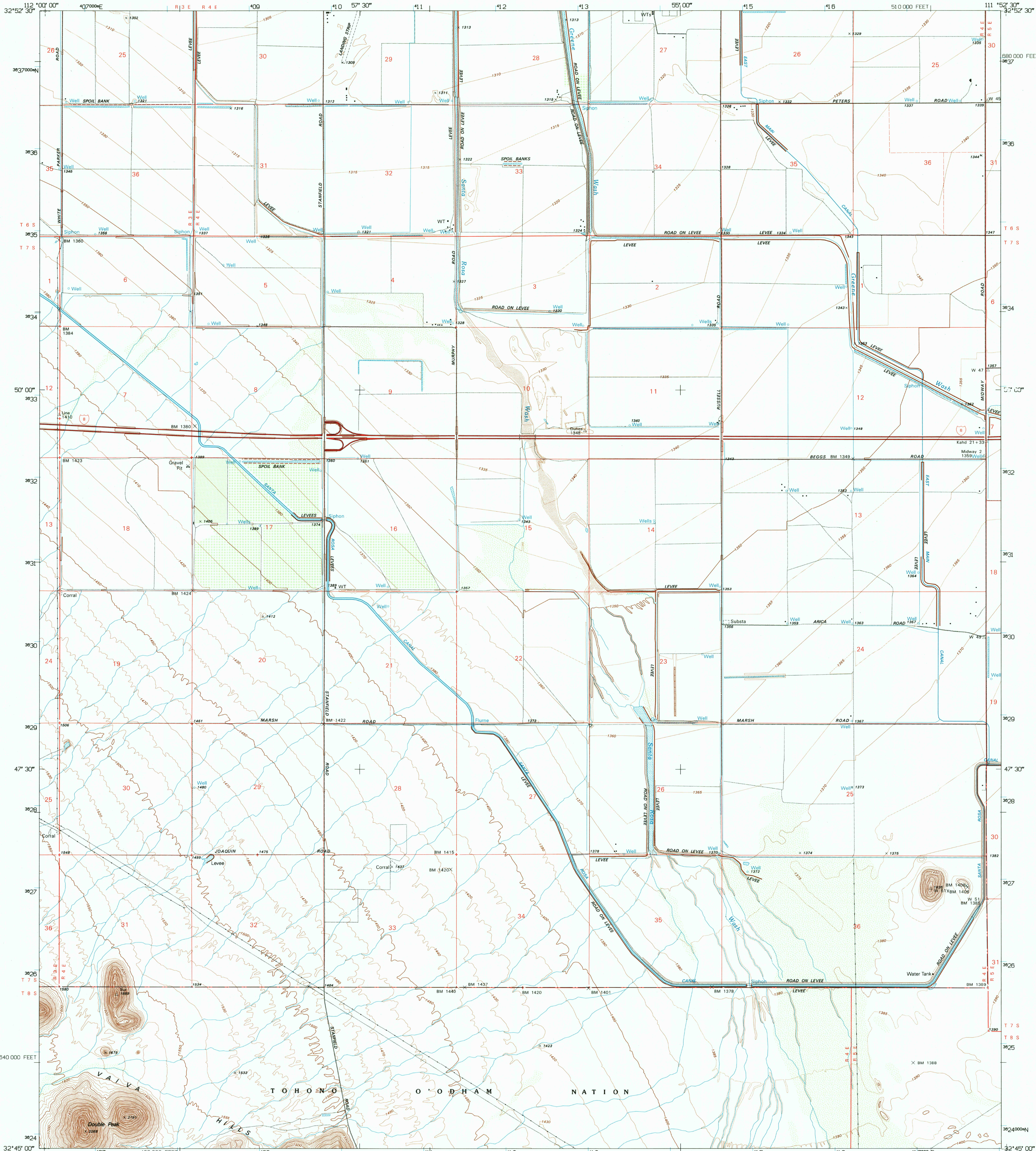
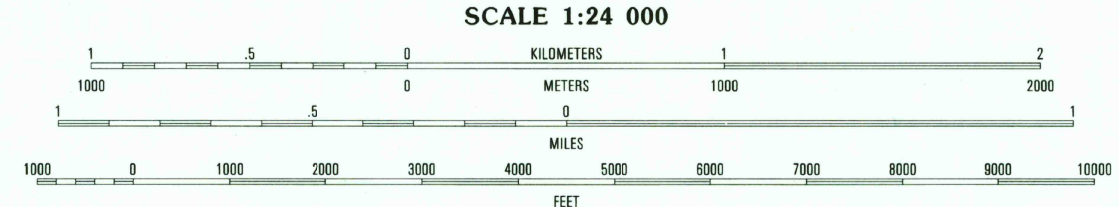
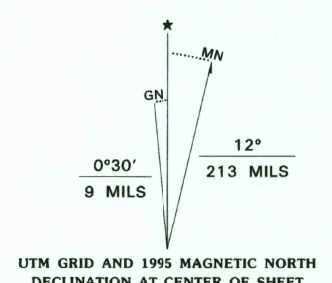


UNITED STATES  
DEPARTMENT OF THE INTERIOR  
GEOLOGICAL SURVEY

DOUBLE PEAK QUADRANGLE  
ARIZONA-PINAL CO.  
7.5-MINUTE SERIES (TOPOGRAPHIC)



Produced by the United States Geological Survey  
Control by USGS and NOS/NOAA  
Compiled from imagery dated 1982. Revised from imagery dated 1990. PLSS and survey control current as of 1992. Field checked 1992. Map edited 1995. Contours and land elevations have not been revised and may conflict with other content.  
North American Datum of 1927 (NAD 27). Projection and blue 1000-meter ticks: Universal Transverse Mercator, zone 12 10 000-foot ticks: Arizona Coordinate System, central zone North American Datum of 1983 (NAD 83) is shown by dashed corner ticks. The values of the shift between NAD 27 and NAD 83 for 7.5-minute intersections are obtainable from National Geodetic Survey NADCON software.  
There may be private inholdings within the boundaries of the National or State reservations shown on this map.  
Fine red dashed lines indicate selected fence and field lines where generally visible on aerial photographs. This information is unchecked.  
This map covers an active subsidence area.



CONTOUR INTERVAL 10 FEET  
SUPPLEMENTARY CONTOUR INTERVAL 5 FEET  
NATIONAL GEODETIC VERTICAL DATUM OF 1929  
TO CONVERT FEET TO METERS MULTIPLY BY 0.3048  
TO CONVERT METERS TO FEET MULTIPLY BY 3.2808  
THIS MAP COMPLIES WITH NATIONAL MAP ACCURACY STANDARDS  
FOR SALE BY U.S. GEOLOGICAL SURVEY  
DENVER, COLORADO 80225, OR RESTON, VIRGINIA 22092  
A FOLDER DESCRIBING TOPOGRAPHIC MAPS AND SYMBOLS IS AVAILABLE ON REQUEST

QUADRANGLE LOCATION

ARIZONA

ROAD CLASSIFICATION

Primary highway  
hard surface .....  
Secondary highway  
hard surface .....  
Interstate Route  
U.S. Route  
State Route

Light-duty road, hard or  
improved surface .....  
Unimproved road .....

USGS 1800 HISTORICAL  
MAP ARCHIVES  
MAY 18 1995  
REC'D FILE COPY

DOUBLE PEAK, AZ  
32111-G8-TF-024  
1992  
DMA 3649 IV SW-SERIES V898

