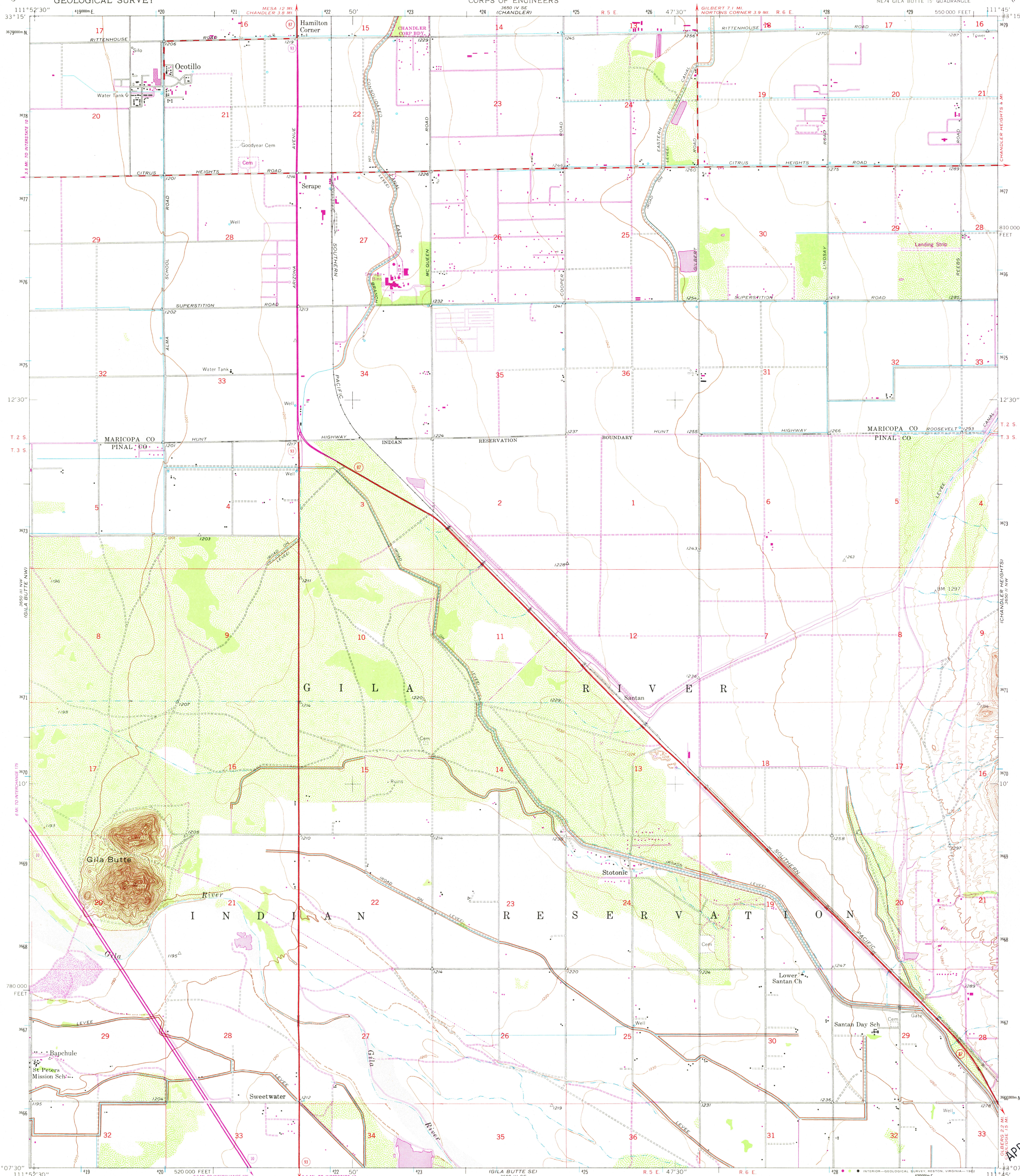


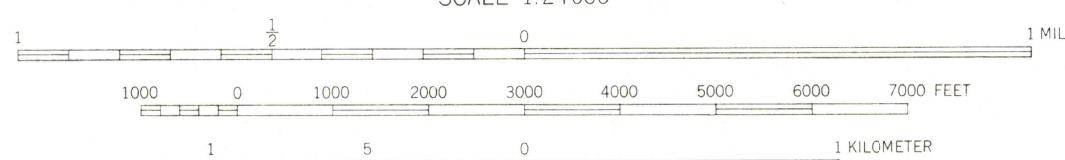
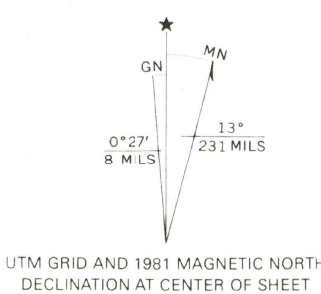
UNITED STATES
DEPARTMENT OF THE INTERIOR
GEOLOGICAL SURVEY

UNITED STATES
DEPARTMENT OF THE ARMY
CORPS OF ENGINEERS

GILA BUTTE QUADRANGLE
ARIZONA
7.5 MINUTE SERIES (TOPOGRAPHIC)



Maped by the Army Map Service
Published for civil use by the Geological Survey
Control by USGS, NOS/NOAA, and USCE
Topography by photogrammetric methods from aerial
photographs taken 1951-1952
Polyconic projection. 10,000-foot grid ticks based on
Arizona coordinate system, central zone
1000-meter Universal Transverse Mercator grid ticks,
zone 12, shown in blue. 1927 North American Datum
To place on the predicted North American Datum 1983
move the projection lines 2 meters south and
64 meters east as shown by dashed corner ticks
There may be private inholdings within the boundaries
of the National or State reservations shown on this map



CONTOUR INTERVAL 10 FEET
NATIONAL GEODETIC VERTICAL DATUM OF 1929

THIS MAP COMPLIES WITH NATIONAL MAP ACCURACY STANDARDS
FOR SALE BY U.S. GEOLOGICAL SURVEY, DENVER, COLORADO 80225, OR RESTON, VIRGINIA 22092
A FOLDER DESCRIBING TOPOGRAPHIC MAPS AND SYMBOLS IS AVAILABLE ON REQUEST



QUADRANGLE LOCATION

ROAD CLASSIFICATION
Heavy-duty ——— Light-duty ———
Medium-duty ——— Unimproved dirt ———
Interstate Route ——— State Route ———

GILA BUTTE, ARIZ.
NE 1/4 GILA BUTTE 15' QUADRANGLE
N3307.5—W11145/7.5

1952
PHOTOREVISED 1981
DMA 3650 III NE-SERIES V898

Revisions shown in purple and woodland compiled by the
Geological Survey from aerial photographs taken 1978
and other sources. This information not field checked
Map edited 1981

APR 16 1982