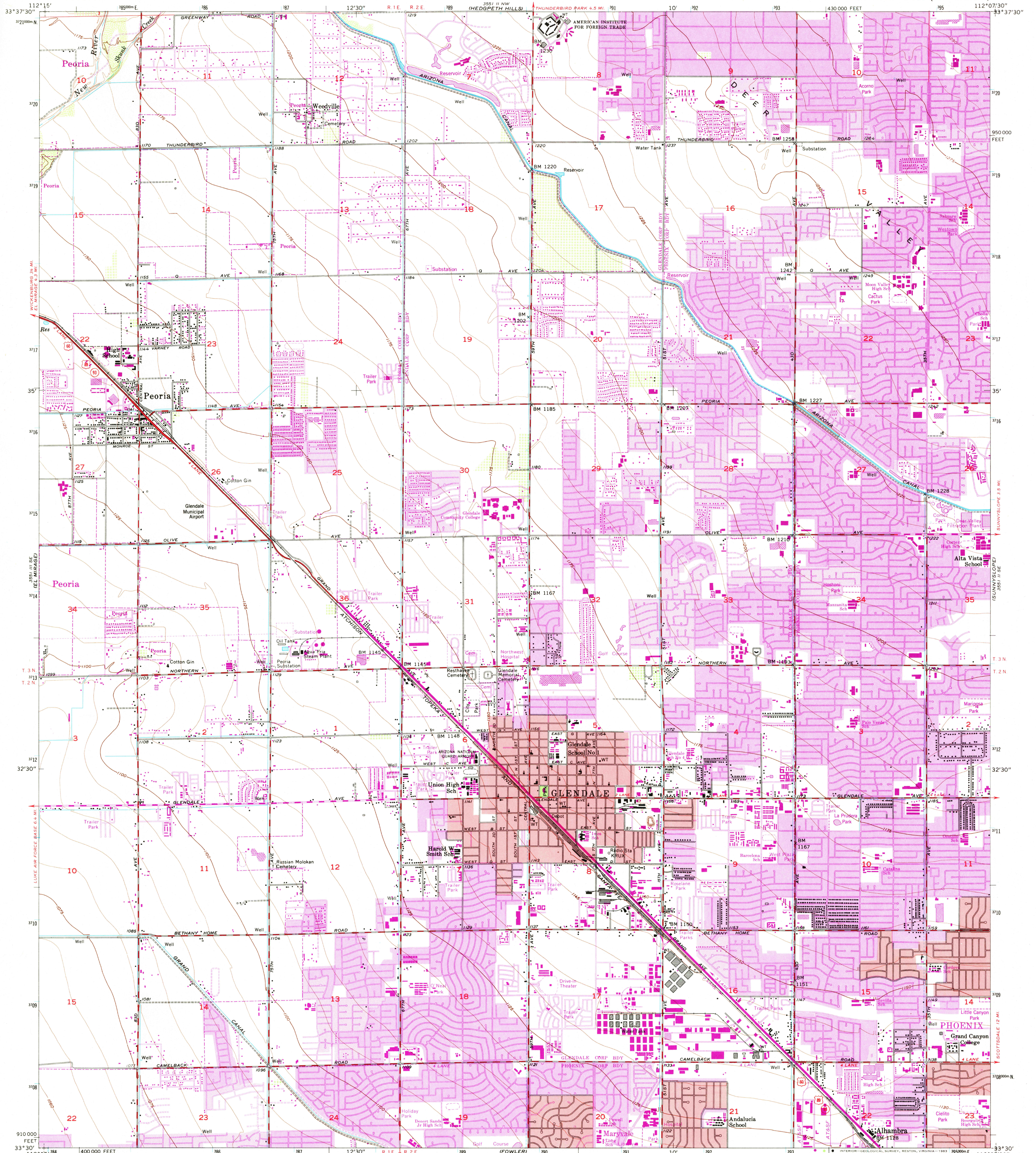


UNITED STATES
DEPARTMENT OF THE INTERIOR
GEOLOGICAL SURVEY

GLENDALE QUADRANGLE
ARIZONA—MARICOPA CO.
7.5 MINUTE SERIES (TOPOGRAPHIC)



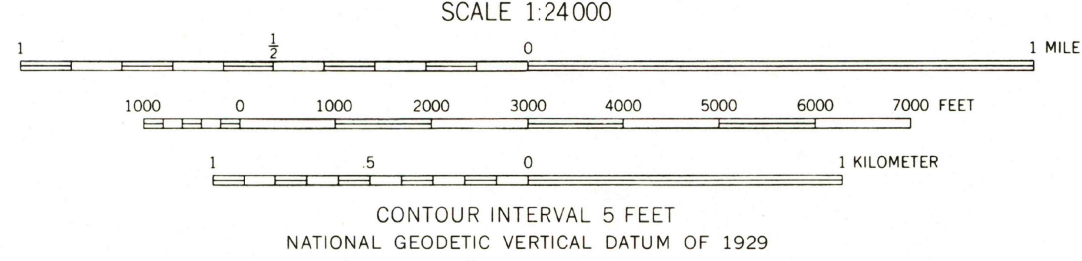
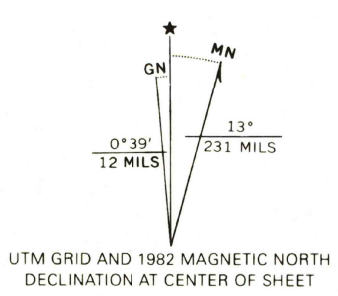
Mapped, edited, and published by the Geological Survey
Control by USGS and NOS/NOAA

Culture and drainage compiled from aerial photographs
taken 1954. Topography by planetable surveys 1957.
Polyconic projection. 10,000-foot grid ticks based on
Arizona coordinate system, central zone
1000-meter Universal Transverse Mercator grid ticks,
zone 12, shown in blue. 1927 North American Datum
To place on the predicted North American Datum 1983
move the projection lines 2 meters south and
65 meters east as shown by dashed corner ticks

Red tint indicates areas in which only landmark buildings are shown

Revisions shown in purple and woodland compiled from
aerial photographs taken 1978 and other sources. This
information not field checked. Map edited 1982

Purple tint indicates extension of urban areas



ROAD CLASSIFICATION	
Heavy-duty	Light-duty
Medium-duty	Unimproved dirt
U.S. Route	State Route

GLENDALE, ARIZ.
N3330—W11207.5/7.5

1957
PHOTOREVISED 1982
DMA 5551 II SW-SERIES V698

THIS MAP COMPLIES WITH NATIONAL MAP ACCURACY STANDARDS
FOR SALE BY U. S. GEOLOGICAL SURVEY, DENVER, COLORADO 80225, OR RESTON, VIRGINIA 22092
A FOLDER DESCRIBING TOPOGRAPHIC MAPS AND SYMBOLS IS AVAILABLE ON REQUEST

JUN 17 1983

3268