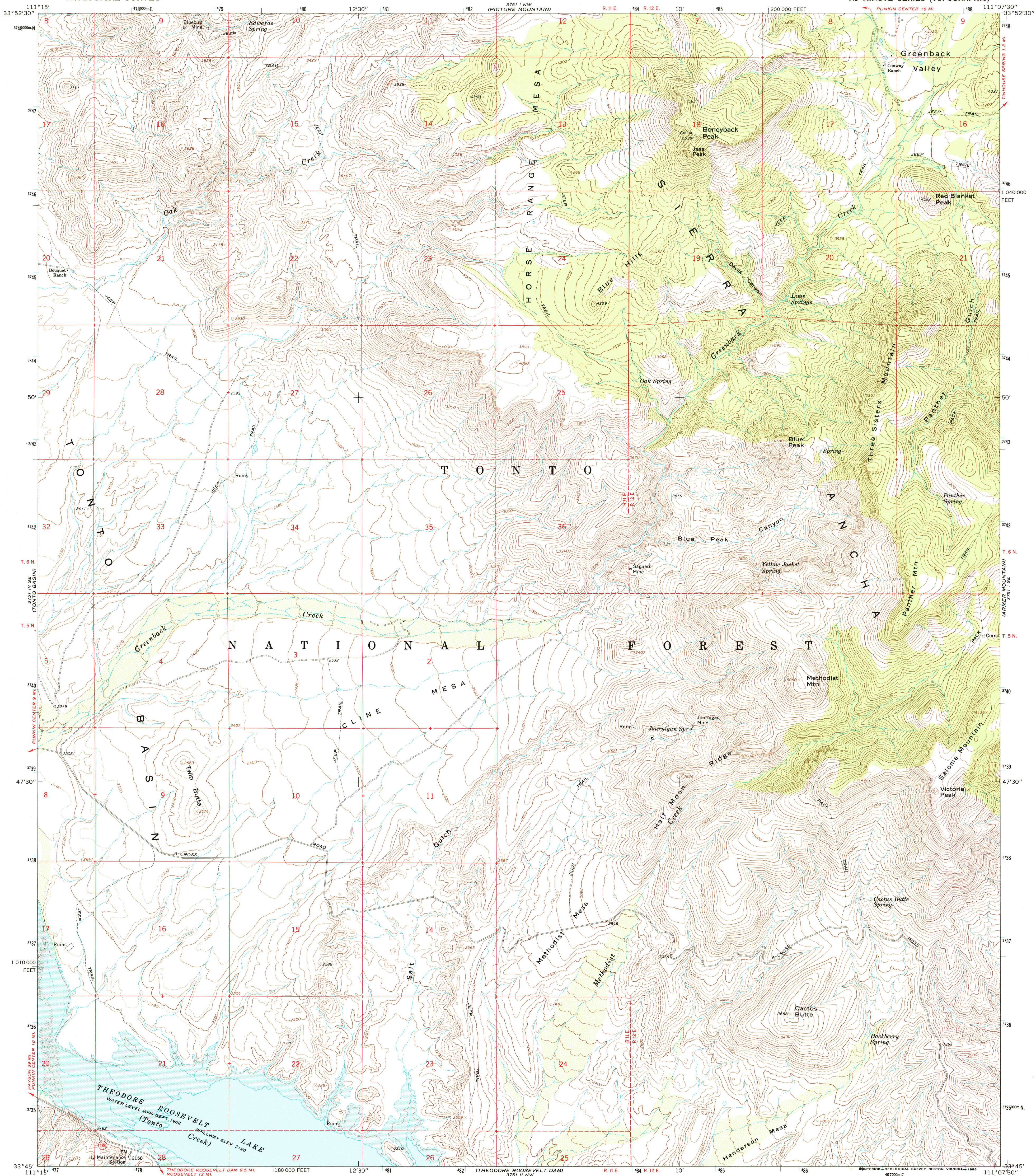


UNITED STATES
DEPARTMENT OF THE INTERIOR
GEOLOGICAL SURVEY

GREENBACK CREEK QUADRANGLE
ARIZONA—GILA CO.
7.5 MINUTE SERIES (TOPOGRAPHIC)



Mapped, edited, and published by the Geological Survey

Control by USGS and USC&GS

Topography by photogrammetric methods from aerial photographs taken 1962. Field checked 1964

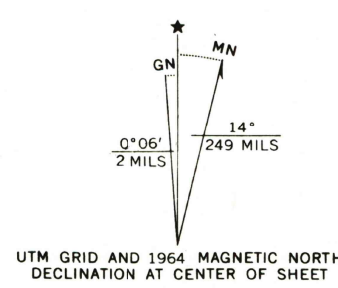
Polyconic projection. 1927 North American datum 10,000-foot grid based on Arizona coordinate system, east zone 1000-meter Universal Transverse Mercator grid ticks, zone 12, shown in blue

To place on the predicted North American Datum 1983 move the projection lines 82 meters east as shown by dashed corner ticks

Where omitted, land lines have not been established

Area covered by dashed light-blue pattern is subject to controlled inundation

There may be private inholdings within the boundaries of the National or State reservations shown on this map



SCALE 1:24,000

CONTOUR INTERVAL 40 FEET

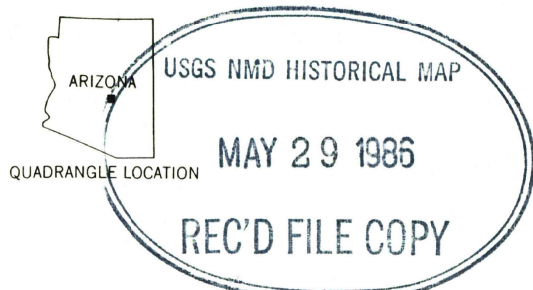
DOTTED LINES REPRESENT 20-FOOT CONTOURS

NATIONAL GEODETIC VERTICAL DATUM OF 1929

THIS MAP COMPLIES WITH NATIONAL MAP ACCURACY STANDARDS

FOR SALE BY U. S. GEOLOGICAL SURVEY, DENVER, COLORADO 80225, OR RESTON, VIRGINIA 22092

A FOLDER DESCRIBING TOPOGRAPHIC MAPS AND SYMBOLS IS AVAILABLE ON REQUEST



ROAD CLASSIFICATION

Light-duty ————— Unimproved dirt - - - - -

State Route ○

GREENBACK CREEK, ARIZ.

33111-G2-TF-024

1964

DMA 3751 | SW—SERIES V898