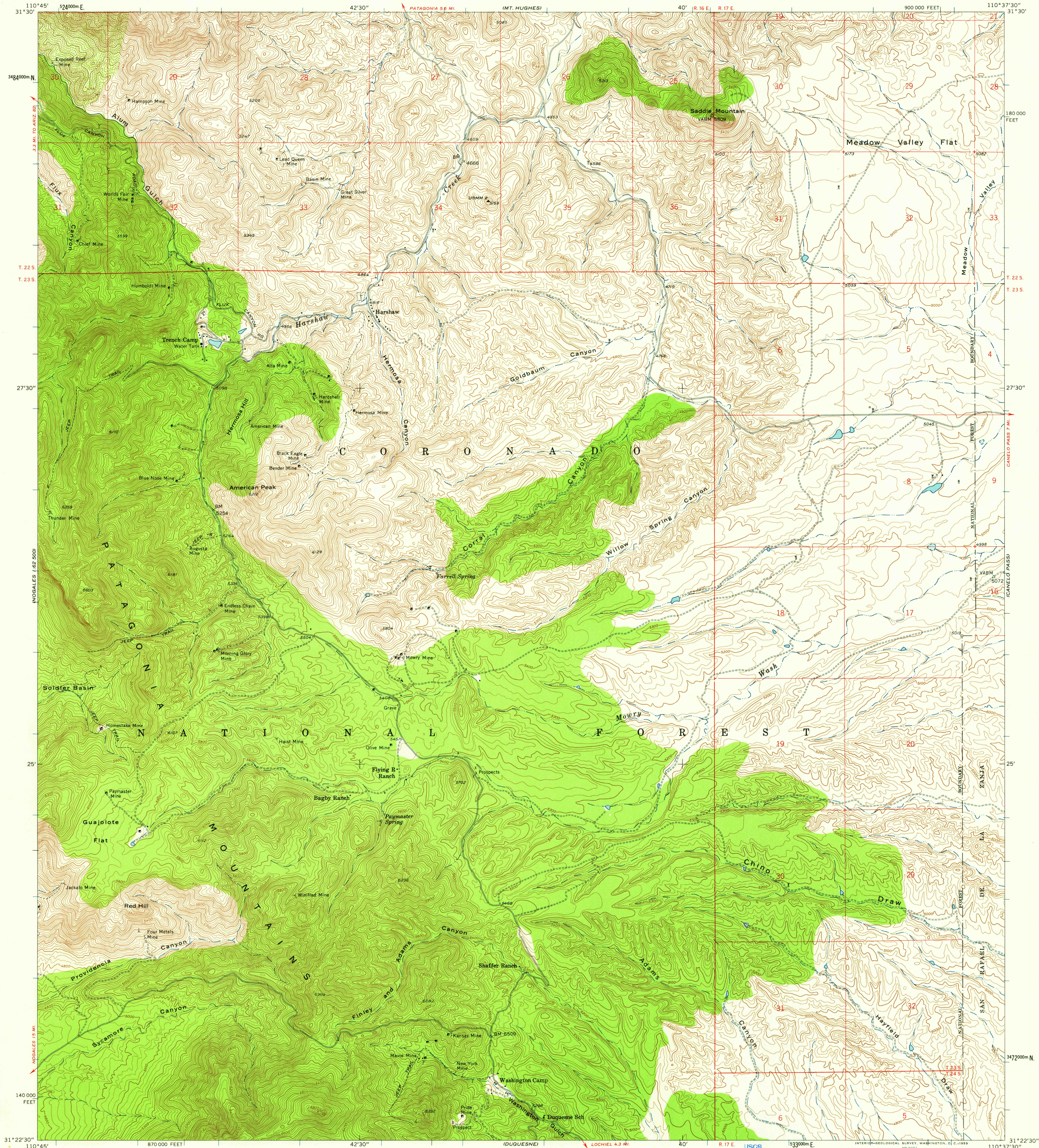


UNITED STATES  
DEPARTMENT OF THE INTERIOR  
GEOLOGICAL SURVEY

UNITED STATES  
DEPARTMENT OF THE ARMY  
CORPS OF ENGINEERS

HARSHAW QUADRANGLE  
ARIZONA-SANTA CRUZ CO.  
7.5 MINUTE SERIES (TOPOGRAPHIC)  
NW 1/4 LOCHIEL 15' QUADRANGLE



Mapped by the Army Map Service  
Edited and published by the Geological Survey  
Control by USGS, USC&GS, and USCE  
Topography from aerial photographs by stereoplotting methods  
Aerial photographs taken 1946. Field check 1948  
Revised by the Geological Survey 1958  
Polyconic projection. 1927 North American datum  
10,000-foot grid based on Arizona coordinate system, central zone  
1000-meter Universal Transverse Mercator grid ticks,  
zone 12, shown in blue  
Unchecked elevations are shown in brown

TRUE NORTH  
MAGNETIC NORTH  
APPROXIMATE MEAN  
DECLINATION, 1958

SCALE 1:24,000  
1 0 1000 2000 3000 4000 5000 6000 7000 FEET  
1 0 5 10 15 20 KILOMETER  
CONTOUR INTERVAL 25 FEET  
DATUM IS MEAN SEA LEVEL

THIS MAP COMPLIES WITH NATIONAL MAP ACCURACY STANDARDS  
FOR SALE BY U. S. GEOLOGICAL SURVEY, DENVER 2, COLORADO OR WASHINGTON 25, D. C.  
A FOLDER DESCRIBING TOPOGRAPHIC MAPS AND SYMBOLS IS AVAILABLE ON REQUEST

USGS  
Historical File  
Topographic Division  
QUADRANGLE LOCATION  
ARIZONA

ROAD CLASSIFICATION  
Light-duty ————— Unimproved dirt —————

U.S.G.S.  
FILE COPY  
TOPOGRAPHIC DIVISION

HARSHAW, ARIZ.  
NW 1/4 LOCHIEL 15' QUADRANGLE  
N3122.5—W11037.5/7.5  
1958

MAY 26 1959  
MAY 26 1958  
1910