

ASHFORD LAKE

ANDERSON CANYON

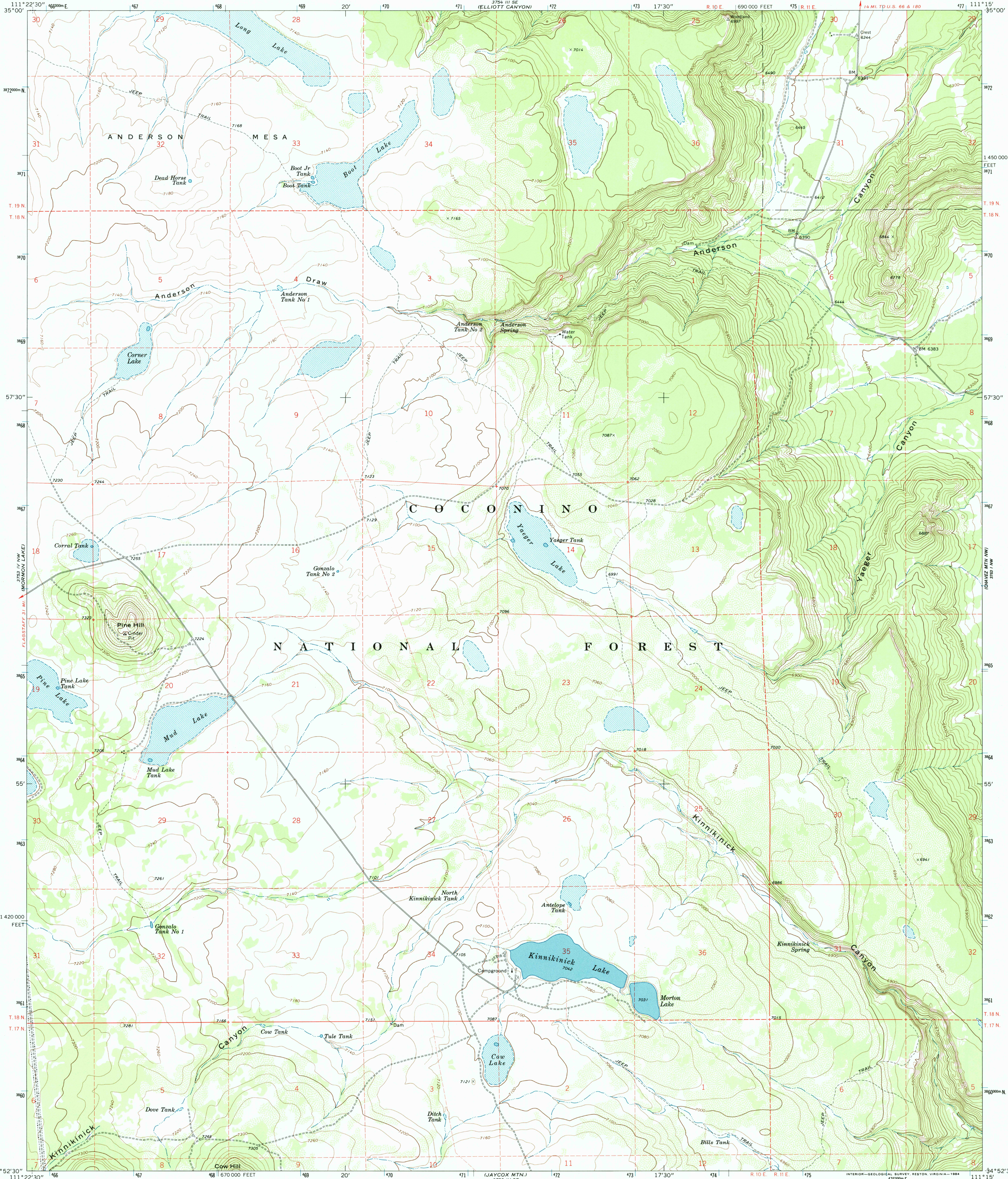


U.S. DEPARTMENT OF THE INTERIOR
U.S. GEOLOGICAL SURVEY

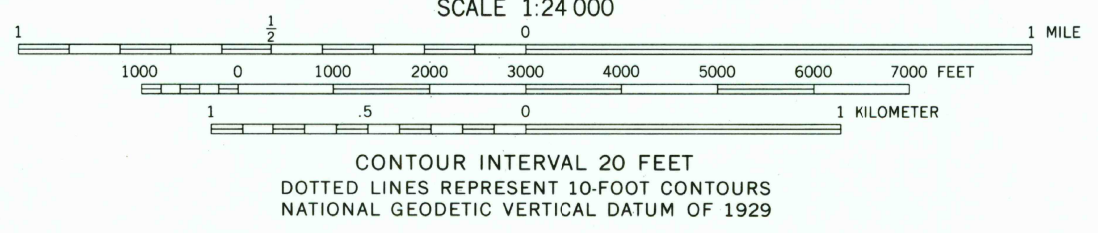
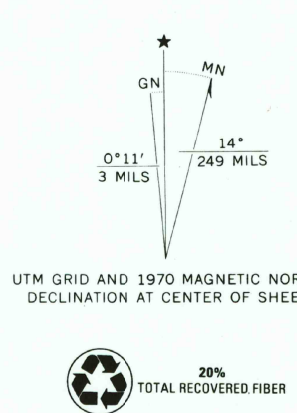


U.S. DEPARTMENT OF AGRICULTURE
FOREST SERVICE

KINNIKINICK LAKE QUADRANGLE
ARIZONA-COCONINO CO.
7.5 MINUTE SERIES (TOPOGRAPHIC)



Maped by the U. S. Forest Service
Edited and published by the Geological Survey
Control by USGS, USC&GS, and USFS
Topography by photogrammetric methods from aerial
photographs taken 1962. Field checked 1970
Polyconic projection. 1927 North American datum
10,000-foot grid based on Arizona coordinate system, central zone
1000-meter Universal Transverse Mercator grid ticks,
zone 12, shown in blue
To place on the predicted North American Datum 1983,
move the projection lines 1 meter north and
64 meters east as shown by dashed corner ticks
There may be private inholdings within the boundaries of
the National or State reservations shown on this map



ROAD CLASSIFICATION
Light-duty road, all weather, improved surface
Unimproved road, fair or dry weather



RECEIVED
JAN 17 2003
USGS NMD
HISTORICAL MAP ARCHIVES

KINNIKINICK LAKE, ARIZ.
N3452.5-W11115.7/5

1970
DMA 3753 IV NE-SERIES V898

THIS MAP COMPLIES WITH NATIONAL MAP ACCURACY STANDARDS
FOR SALE BY U.S. GEOLOGICAL SURVEY, P.O. BOX 25286, DENVER, COLORADO 80225
A FOLDER DESCRIBING TOPOGRAPHIC MAPS AND SYMBOLS IS AVAILABLE ON REQUEST

