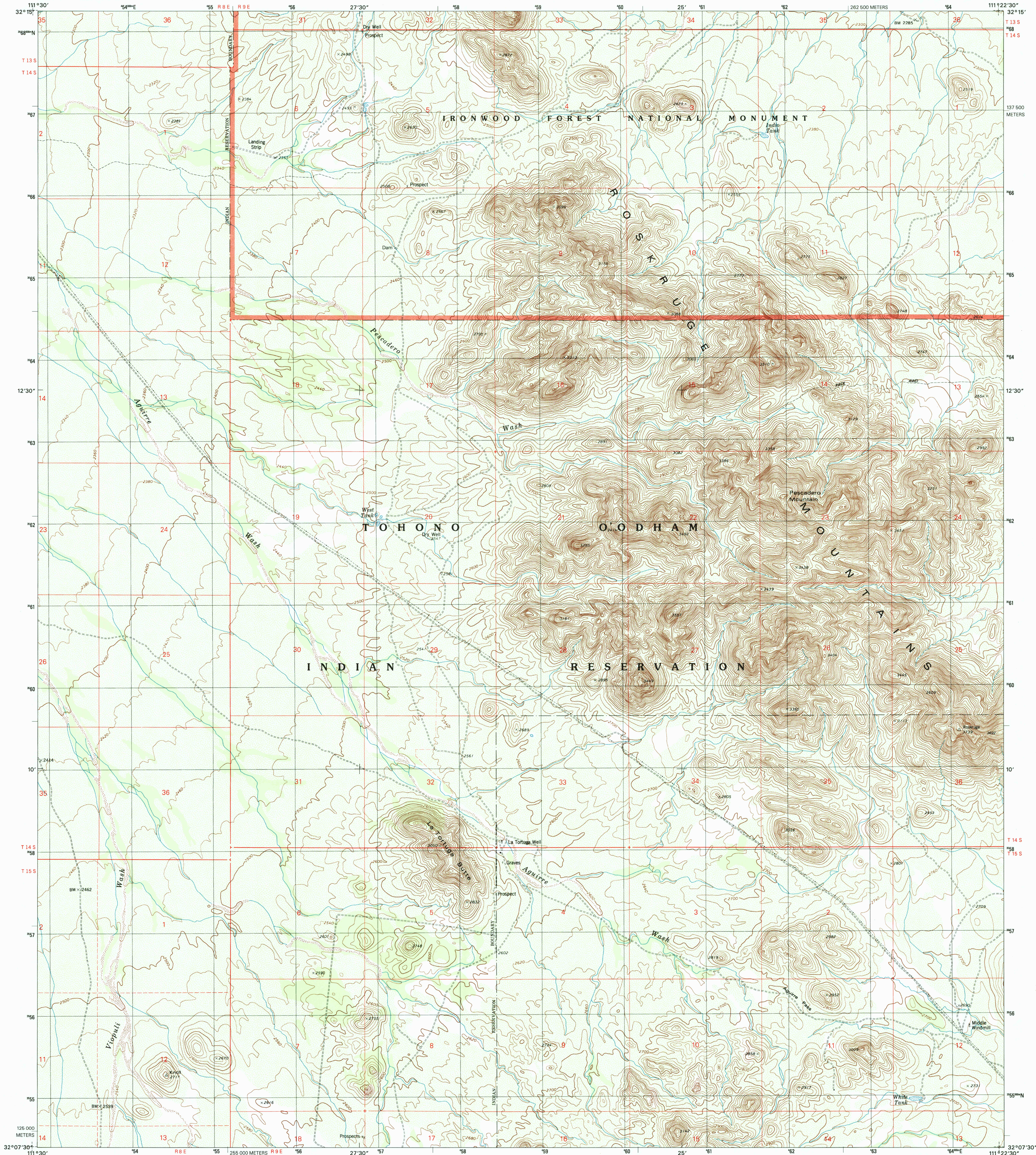


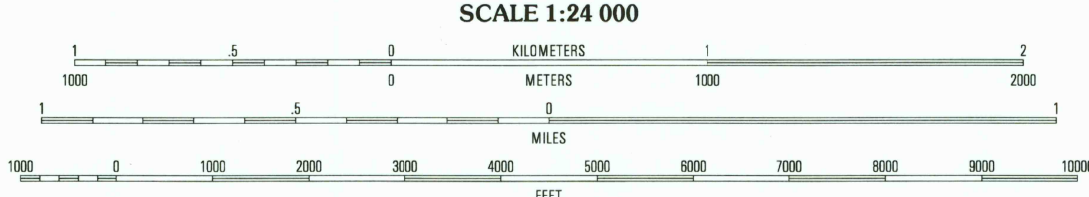
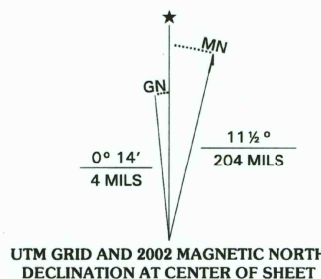


U.S. DEPARTMENT OF THE INTERIOR
U.S. GEOLOGICAL SURVEY

LA TORTUGA BUTTE QUADRANGLE
ARIZONA-PIMA CO.
7.5-MINUTE SERIES (TOPOGRAPHIC)



Produced by the United States Geological Survey
Topography compiled 1974. Planimetry derived from imagery
taken 1996 and other sources. Public Land Survey System and
survey control current as of 1975. Boundaries current as of 2001
North American Datum of 1983 (NAD 83). Projection and
1 000-meter grid: Universal Transverse Mercator, zone 12
2 500-meter ticks: Arizona Coordinate System of 1983
(central zone)
North American Datum of 1927 (NAD 27) is shown by dashed
corner ticks. The values of the shift between NAD 83 and NAD 27
for 7.5-minute intersections are obtainable from National Geodetic
Survey NADCON software
There may be private inholdings within the boundaries of
the National or State reservations shown on this map



CONTOUR INTERVAL 20 FEET
NATIONAL GEODETIC VERTICAL DATUM OF 1929
(TO CONVERT ELEVATIONS TO THE NORTH AMERICAN VERTICAL DATUM OF 1988, ADD 2 FEET)
TO CONVERT FROM FEET TO METERS, MULTIPLY BY 0.3048

THIS MAP COMPLIES WITH NATIONAL MAP ACCURACY STANDARDS
FOR SALE BY U.S. GEOLOGICAL SURVEY, P.O. BOX 25286, DENVER, COLORADO 80225
A FOLDER DESCRIBING TOPOGRAPHIC MAPS AND SYMBOLS IS AVAILABLE ON REQUEST



QUADRANGLE LOCATION

1	2	3	1 Kohi Kohi Hill
4	5	2 Waterman Peak	
6	7	3 West of Awa	
		4 San Ignacio Ranch	
		5 Cocorogque Butte	
		6 Pan Tak	
		7 San Pedro	
		8 Three Points	

ADJOINING 7.5' QUADRANGLES

ROAD CLASSIFICATION
Primary highway hard surface
Secondary highway hard surface
Light-duty road, hard or improved surface
Unimproved road
Interstate Route
U.S. Route
State Route

LA TORTUGA BUTTE, AZ

1996

NIMA 3748 III NW-SERIES 898



RECEIVED
JAN 17 2003