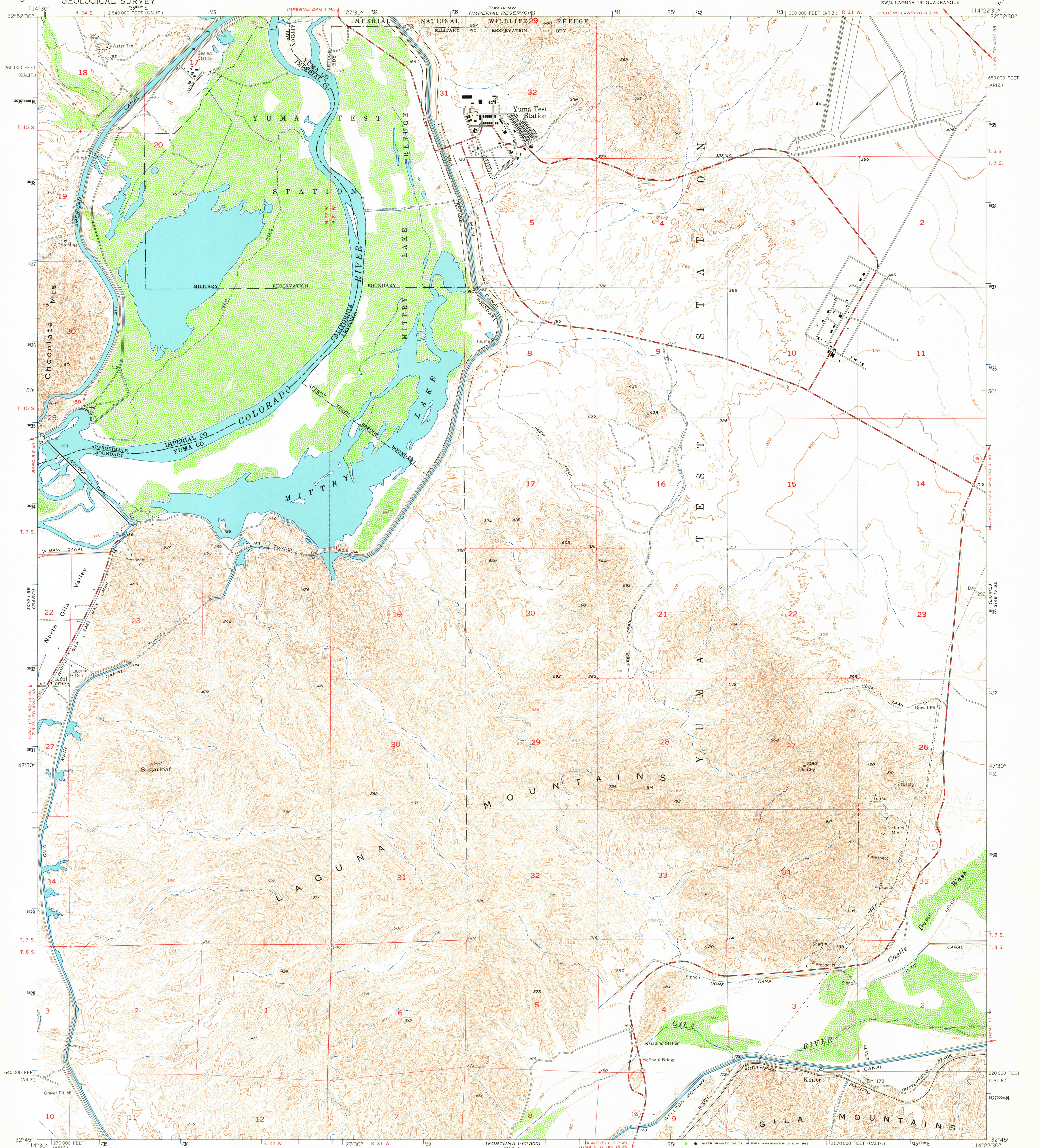


UNITED STATES
DEPARTMENT OF THE INTERIOR
GEOLOGICAL SURVEY

LAGUNA DAM QUADRANGLE
ARIZONA—CALIFORNIA
7.5 MINUTE SERIES (TOPOGRAPHIC)
SW/4 LAGUNA 15' QUADRANGLE



Mapped, edited, and published by the Geological Survey
Control by USGS, and USC&GS
Topography from aerial photographs by Kelsh plotter
Aerial photographs taken 1953. Field check 1955
Polyconic projection. 1927 North American datum
10,000-foot grids based on Arizona coordinate system, west zone
and California coordinate system, zone 6
Dashed land lines indicate approximate locations
Unchecked elevations are shown in brown
State boundary subject to adjustment
1000-meter Universal Transverse Mercator grid ticks,
zone 11, shown in blue

UTM GRID AND 1955 MAGNETIC NORTH
DECLINATION AT CENTER OF SHEET

SCALE 1:24,000
1 0 1000 2000 3000 4000 5000 6000 7000 FEET
1 0 1 2 KILOMETER
CONTOUR INTERVAL 20 FEET
DASHED LINES REPRESENT 10 FOOT CONTOURS
DATUM IS MEAN SEA LEVEL

THIS MAP COMPLIES WITH NATIONAL MAP ACCURACY STANDARDS
FOR SALE BY U.S. GEOLOGICAL SURVEY, DENVER 25, COLORADO OR WASHINGTON 25, D. C.
A FOLDER DESCRIBING TOPOGRAPHIC MAPS SYMBOLS IS AVAILABLE ON REQUEST

USGS
Historical File
Topographic Division



ROAD CLASSIFICATION
Heavy-duty ——— Light-duty ———
Medium-duty ——— Unimproved dirt ———
U.S. Route ——— State Route ———

U.S.G.S.
FILE COPY
TOPOGRAPHIC DIVISION

LAGUNA DAM, ARIZ.—CALIF.
SW/4 LAGUNA 15' QUADRANGLE
N3245—W11422.5/7.5

1955

AMS 3149 IV SW—SERIES Y898

JAN 1 5 1965

3210