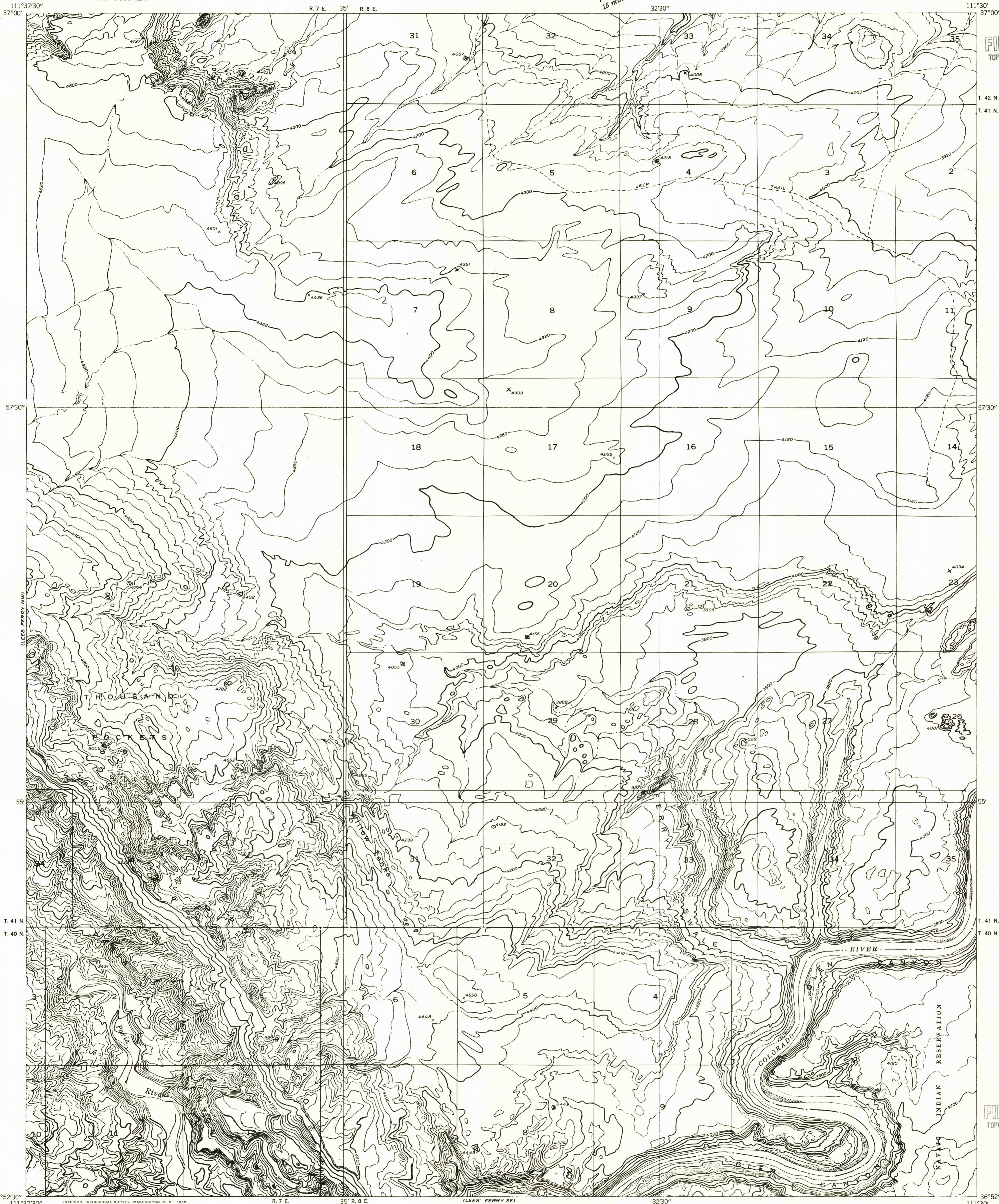


DEPARTMENT OF THE INTERIOR
GEOLOGICAL SURVEY

Preliminary edition
Pending completion of 1:62,500 scale
15 minute maps covering this area

LEES FERRY NE QUADRANGLE
ARIZONA—COCONINO CO.

U.S.G.S.
FILE COPY
TOPOGRAPHIC DIVISION



T. 42 N.
T. 41 N.

55'

T. 41 N.
T. 40 N.

36°52'30"
111°37'30"

Maped by the Geological Survey 1954
Topography by multiplex methods from
aerial photographs taken 1951

TRUE NORTH
MAGNETIC NORTH
APPROXIMATE MEAN
DECLINATION, 1954

SCALE 1:24000
1 0 1000 2000 3000 4000 5000 6000 7000 FEET
1 MILE

CONTOUR INTERVAL 40 FEET
DATUM IS MEAN SEA LEVEL

ROAD CLASSIFICATION
Improved Unimproved

USGS
Historical File
Topographic Division

LEES FERRY NE, ARIZ.
N3652.5—W11130.7.5

U.S.G.S.
FILE COPY
TOPOGRAPHIC DIVISION

JUL 15 1955

2050