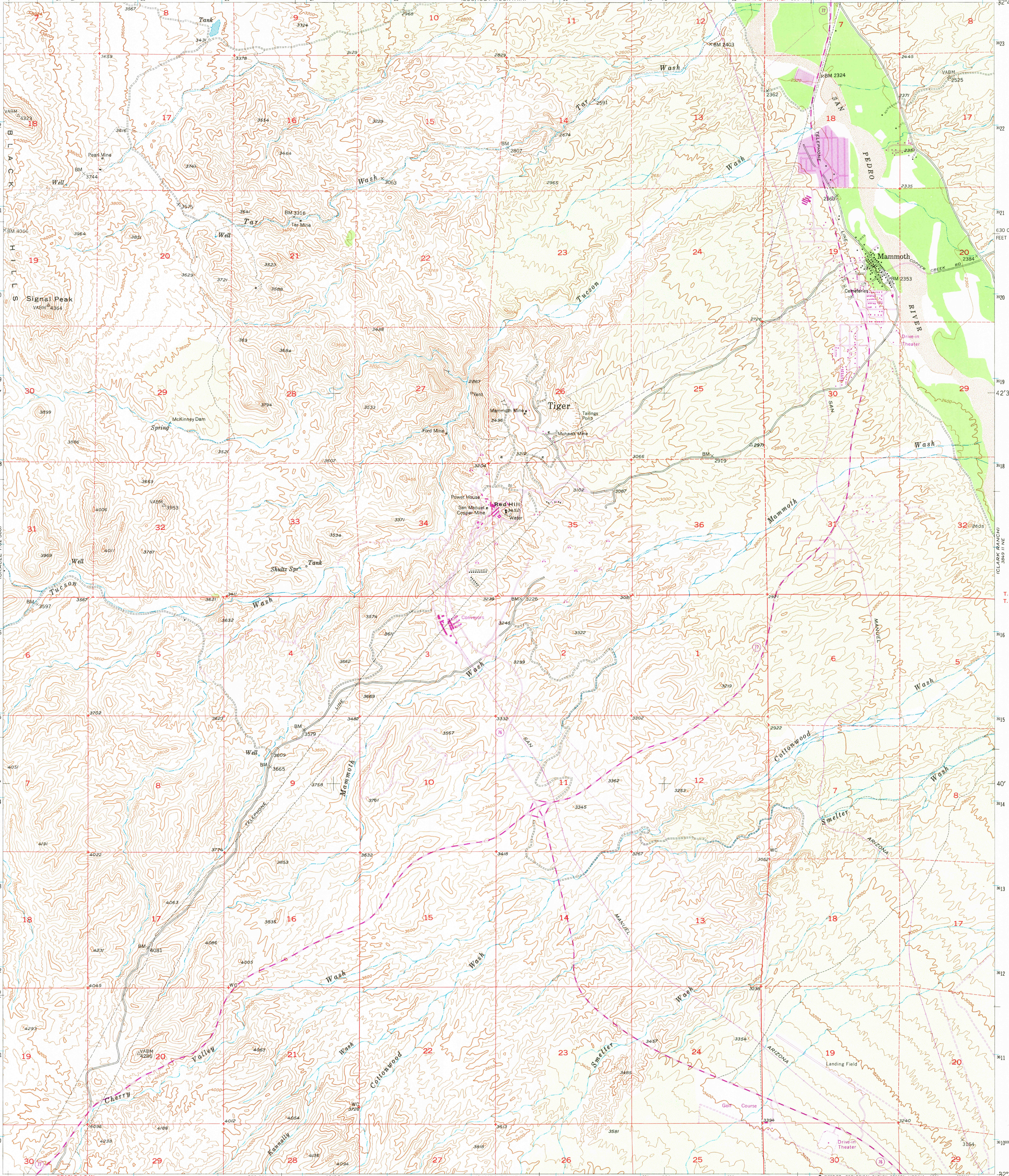


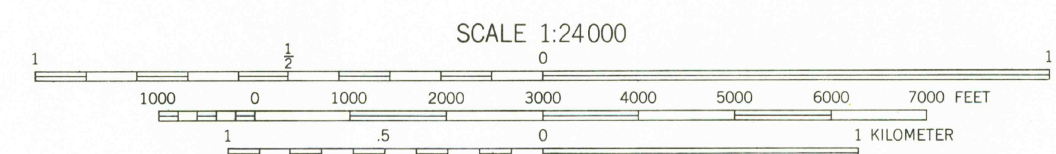
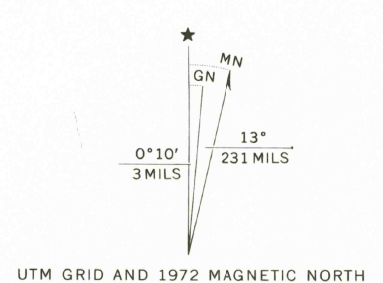
UNITED STATES
DEPARTMENT OF THE INTERIOR
GEOLOGICAL SURVEY

UNITED STATES
DEPARTMENT OF THE ARMY
CORPS OF ENGINEERS

MAMMOTH QUADRANGLE
ARIZONA-PINAL CO.
7.5 MINUTE SERIES (TOPOGRAPHIC)



Maped, edited, and published by the Geological Survey
Control by USGS and USC&GS
Topography from aerial photographs by multiplex methods,
aerial photographs taken 1945. Field check 1948
Polyconic projection. 1927 North American datum 1983
central zone 1000-meter Universal Transverse Mercator grid ticks,
zone 12, shown in blue
To place on the predicted North American Datum 1983
move the projection lines 5 meters south and
61 meters east as shown by dashed corner ticks
Revisions shown in purple compiled from aerial photographs
taken 1972. This information not field checked
Purple tint indicates extension of urban areas



ROAD CLASSIFICATION
Medium-duty ——— Light-duty ———
Unimproved dirt =-----
○ State Route

THIS MAP COMPLIES WITH NATIONAL MAP ACCURACY STANDARDS
FOR SALE BY U.S. GEOLOGICAL SURVEY, DENVER, COLORADO 80225, OR RESTON, VIRGINIA 22092
A FOLDER DESCRIBING TOPOGRAPHIC MAPS AND SYMBOLS IS AVAILABLE ON REQUEST

USGS
Historical File
National Mapping Div.

MAMMOTH, ARIZ.
N3237.5-W11037.5/7.5
1948
PHOTOREVISED 1972
DMA 3849 II NW-SERIES V898

APR 16 1981

1700