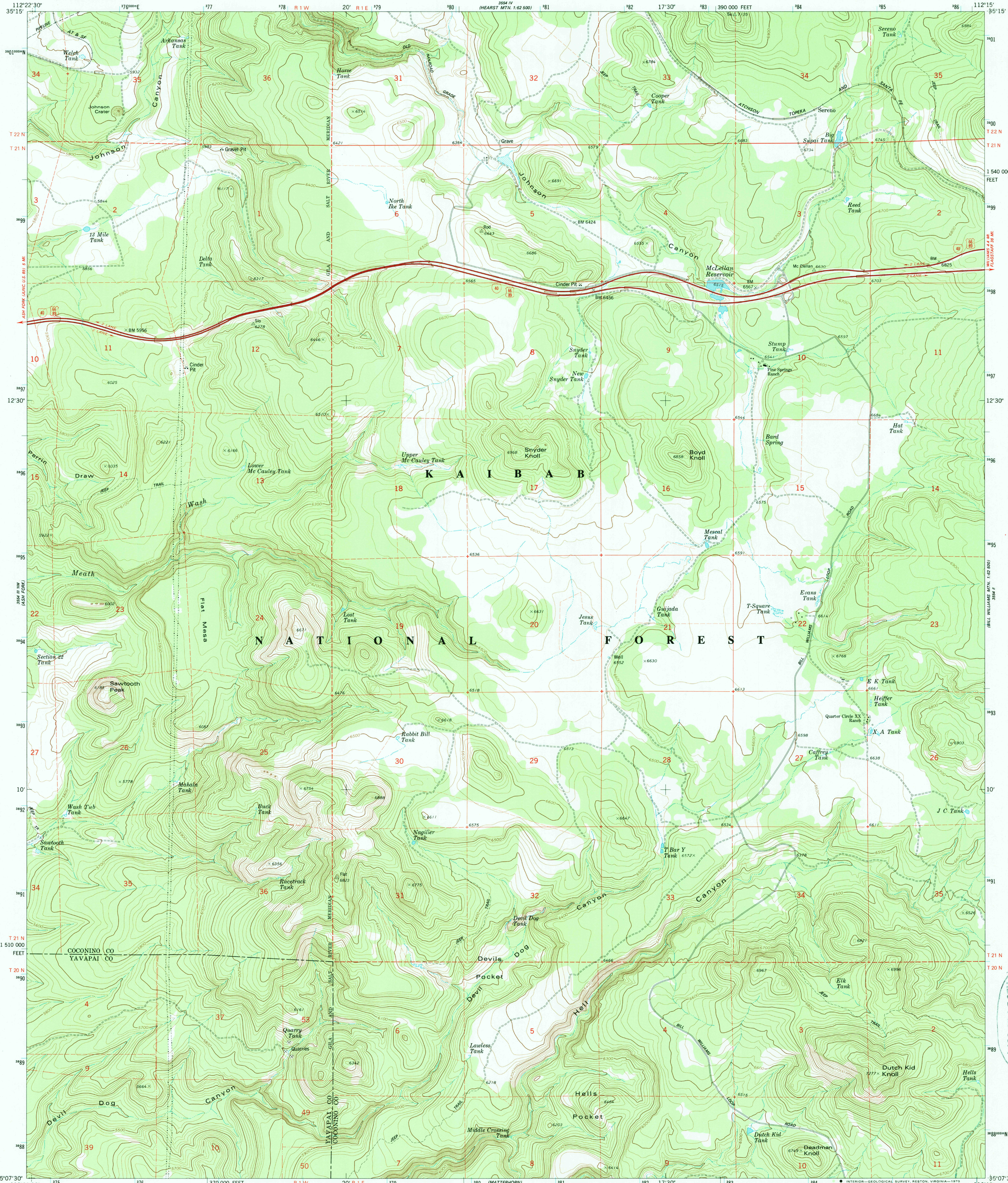


354 IV  
(HEAST MTN.)  
1:62,500

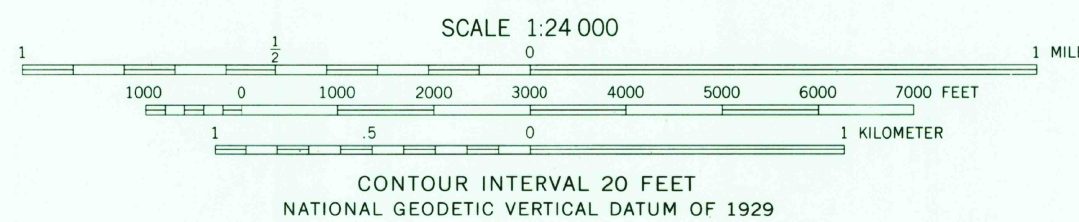
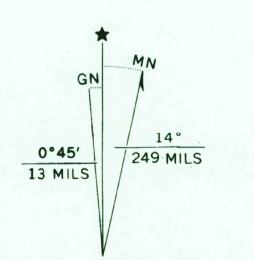
UNITED STATES  
DEPARTMENT OF THE INTERIOR  
GEOLOGICAL SURVEY

MC LELLAN RESERVOIR QUADRANGLE  
ARIZONA  
7.5 MINUTE SERIES (TOPOGRAPHIC)  
NE/4 ASH FORK 15' QUADRANGLE

354 II  
(WILLIAMS MTS.)  
1:62,500



Mapped, edited, and published by the Geological Survey  
Control by USGS, NOS/NOAA, and U. S. Forest Service  
Topography by photogrammetric methods from aerial  
photographs taken 1973. Field checked 1974. Map edited 1979  
Projection and 10,000-foot grid ticks: Arizona coordinate  
system, central zone (transverse Mercator)  
1000-meter Universal Transverse Mercator grid ticks,  
zone 12, shown in blue. 1927 North American datum  
To place on the predicted North American Datum 1983  
move the projection lines 2 meters north and  
67 meters east as shown by dashed corner ticks  
Fine red dashed lines indicate selected fence and field lines where  
generally visible on aerial photographs. This information is unchecked  
There may be private inholdings within the boundaries of  
the National or State reservations shown on this map



ROAD CLASSIFICATION  
Primary highway, hard surface  
Secondary highway, hard surface  
Light-duty road, hard or improved surface  
Unimproved road  
Interstate Route  
U. S. Route  
State Route

MC LELLAN RESERVOIR, ARIZ.  
NE/4 ASH FORK 15' QUADRANGLE  
N3507.5-W11215.7.5

1979  
DMA 3554 III NE-SERIES V898

THIS MAP COMPLIES WITH NATIONAL MAP ACCURACY STANDARDS  
FOR SALE BY U. S. GEOLOGICAL SURVEY, DENVER, COLORADO 80225, OR RESTON, VIRGINIA 22092  
A FOLDER DESCRIBING TOPOGRAPHIC MAPS AND SYMBOLS IS AVAILABLE ON REQUEST

RECD FILE COPY  
MAY 26 1987  
U.S. GEOLOGICAL SURVEY