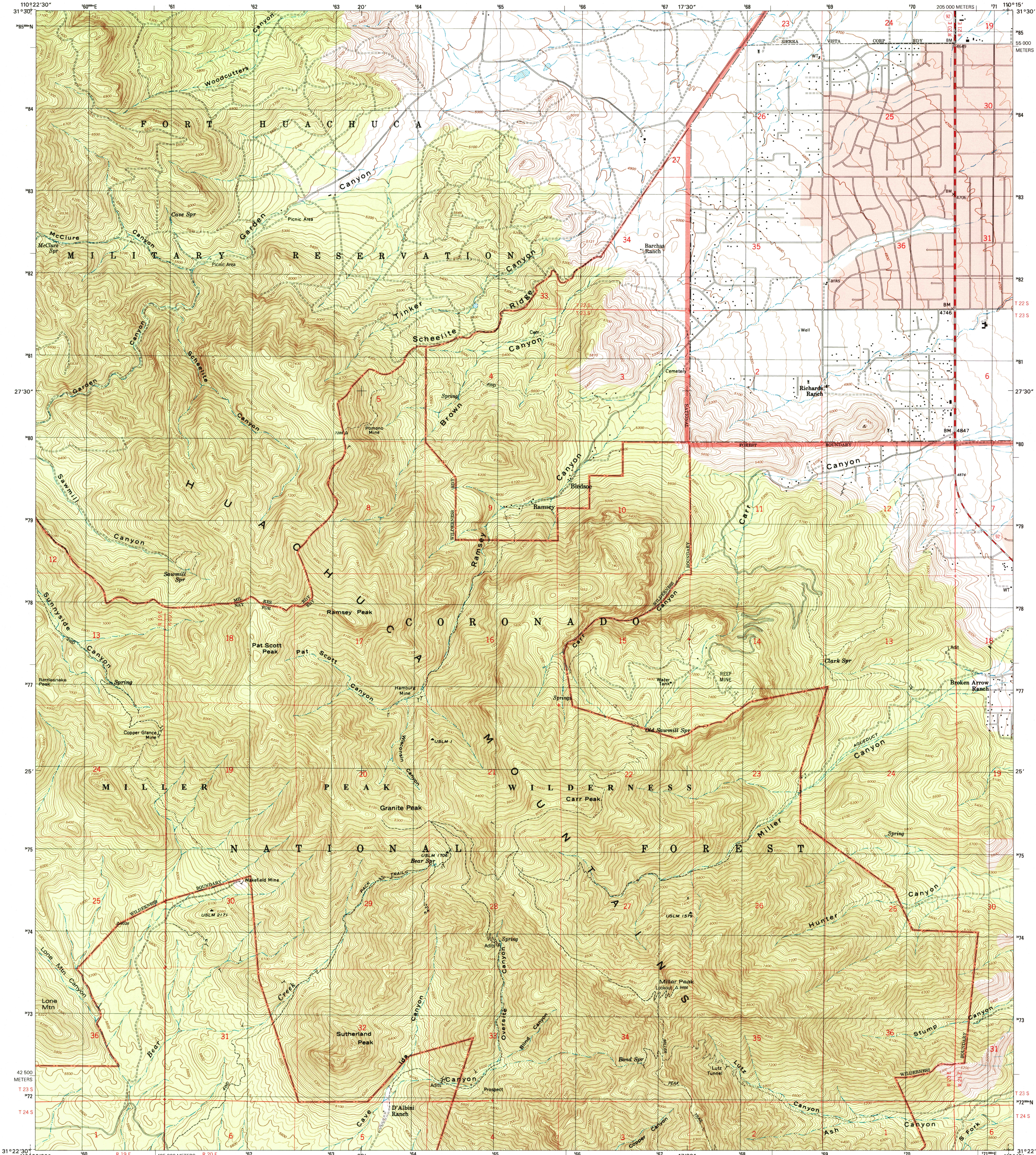


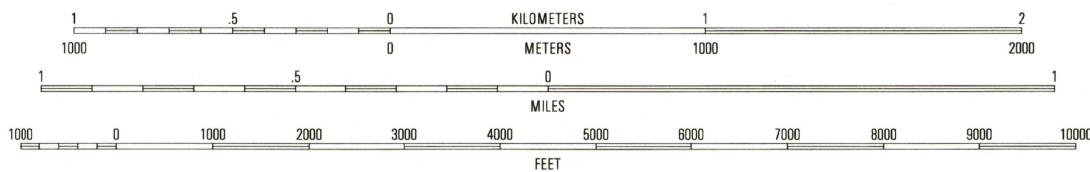
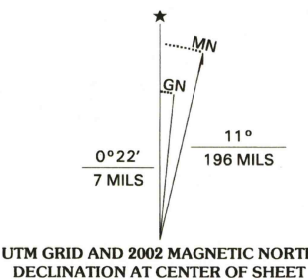


U.S. DEPARTMENT OF THE INTERIOR
U.S. GEOLOGICAL SURVEY

MILLER PEAK QUADRANGLE
ARIZONA-COCHISE CO.
7.5-MINUTE SERIES (TOPOGRAPHIC)



Produced by the United States Geological Survey
Topography compiled 1946. Planimetry derived from imagery taken 1946 and other sources. Public Land Survey System and survey control current as of 1948. Boundaries current as of 2000.
North American Datum of 1983 (NAD 83). Projection and 1,000-meter grid: Universal Transverse Mercator, zone 12. 2,500-meter ticks: Arizona Coordinate System of 1983 (east zone).
North American Datum of 1927 (NAD 27) is shown by dashed corner ticks. The values of the shift between NAD 83 and NAD 27 for 7.5-minute intersections are obtainable from National Geodetic Survey NADCON software.
There may be private inholdings within the boundaries of the National or State reservations shown on this map.
Houses of worship, schools, and other labeled buildings verified 1948.



CONTOUR INTERVAL 25 FEET
NATIONAL GEODETIC VERTICAL DATUM OF 1929
(TO CONVERT ELEVATIONS TO THE NORTH AMERICAN VERTICAL DATUM OF 1988, ADD 3 FEET)
TO CONVERT FROM FEET TO METERS, MULTIPLY BY 0.3048



QUADRANGLE LOCATION

| | | |
|---|---|---|
| 1 | 2 | 3 |
| 4 | 5 | 6 |
| 7 | 8 | |

RECEIVED
APR 3 0 2002

U.S. GEOLOGICAL SURVEY
NATIONAL MAP ARCHIVES

ROAD CLASSIFICATION

- Primary highway: hard surface (solid line), improved surface (dashed line), unimproved road (dotted line)
- Light-duty road, hard or improved surface (solid line)
- Interstate Route (thick solid line with red shield)
- U.S. Route (solid line with red shield)
- State Route (solid line with red shield)

MILLER PEAK, AZ
1996

NIMA 3946 IV NE-SERIES V898

THIS MAP COMPLIES WITH NATIONAL MAP ACCURACY STANDARDS
FOR SALE BY U.S. GEOLOGICAL SURVEY, P.O. BOX 25286, DENVER, COLORADO 80225
A FOLDER DESCRIBING TOPOGRAPHIC MAPS AND SYMBOLS IS AVAILABLE ON REQUEST

