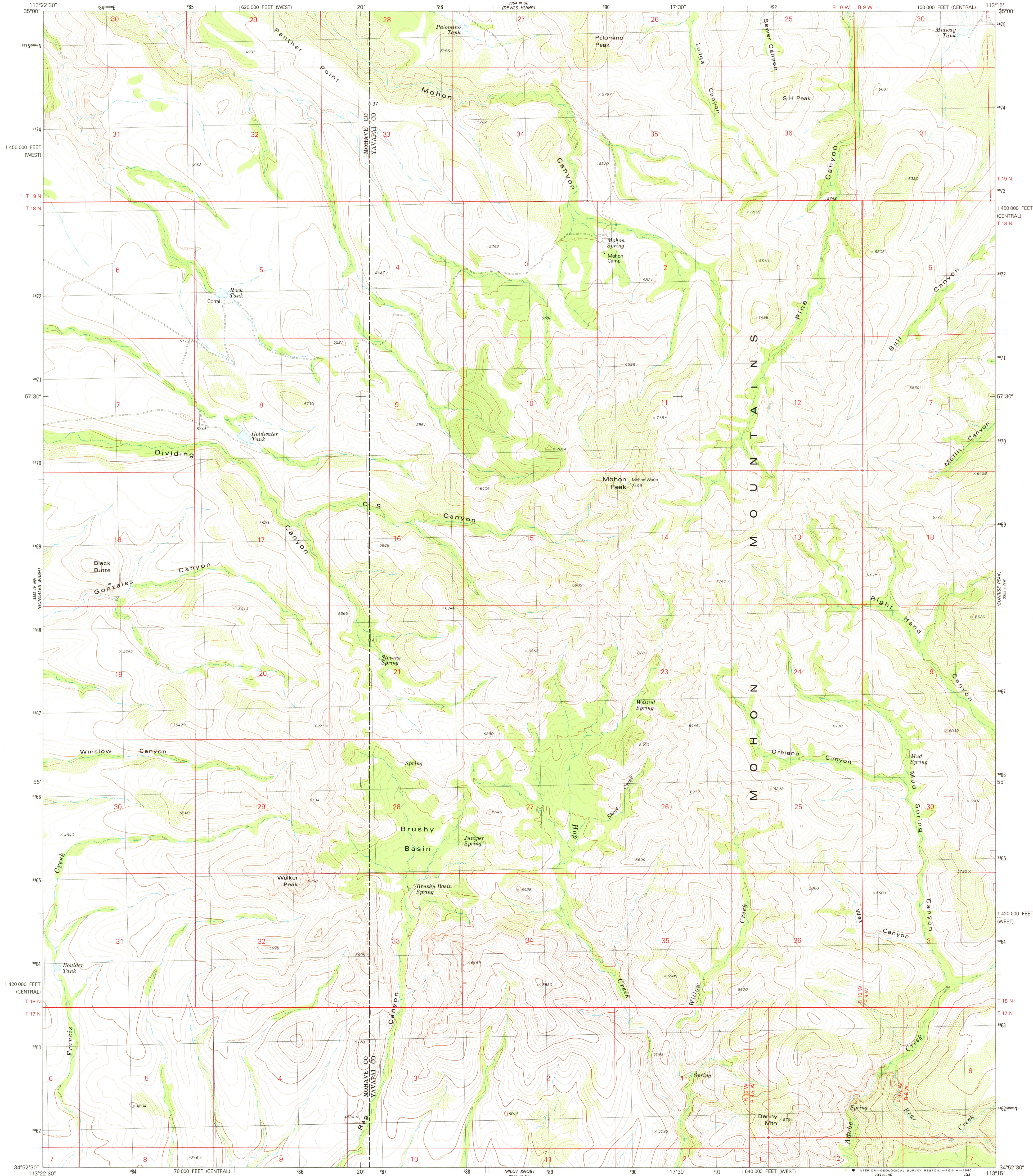


UNITED STATES
DEPARTMENT OF THE INTERIOR
GEOLOGICAL SURVEY

MOHON PEAK QUADRANGLE
ARIZONA
7.5 MINUTE SERIES (TOPOGRAPHIC)

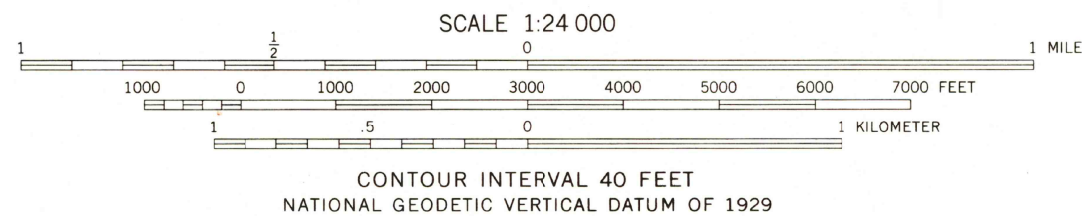
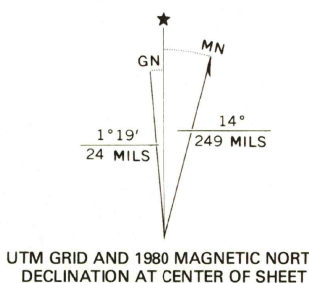


Mapped, edited, and published by the Geological Survey

Control by USGS and NOS/NOAA

Topography by photogrammetric methods from aerial
photographs taken 1973. Field checked 1975
Map edited 1980

Projection: Arizona coordinate system, central zone
(transverse Mercator)
10,000-foot grid ticks based on Arizona coordinate
system, central and west zones
1000-meter Universal Transverse Mercator grid, zone 12
1927 North American Datum
To place on the predicted North American Datum 1983
move the projection lines 2 meters north and
69 meters east as shown by dashed corner ticks



ROAD CLASSIFICATION	
Primary highway, hard surface	Light-duty road, hard or improved surface
Secondary highway, hard surface	Unimproved road
Interstate Route	U.S. Route
	State Route

SEP 24 1980

THIS MAP COMPLIES WITH NATIONAL MAP ACCURACY STANDARDS
FOR SALE BY U. S. GEOLOGICAL SURVEY, DENVER, COLORADO 80225, OR RESTON, VIRGINIA 22092
A FOLDER DESCRIBING TOPOGRAPHIC MAPS AND SYMBOLS IS AVAILABLE ON REQUEST

USGS
Historical File
Topographic Division

MOHON PEAK, ARIZ.
N3452.5-W11315.7.5
1980

DMA 3353 IV NE-SERIES V988