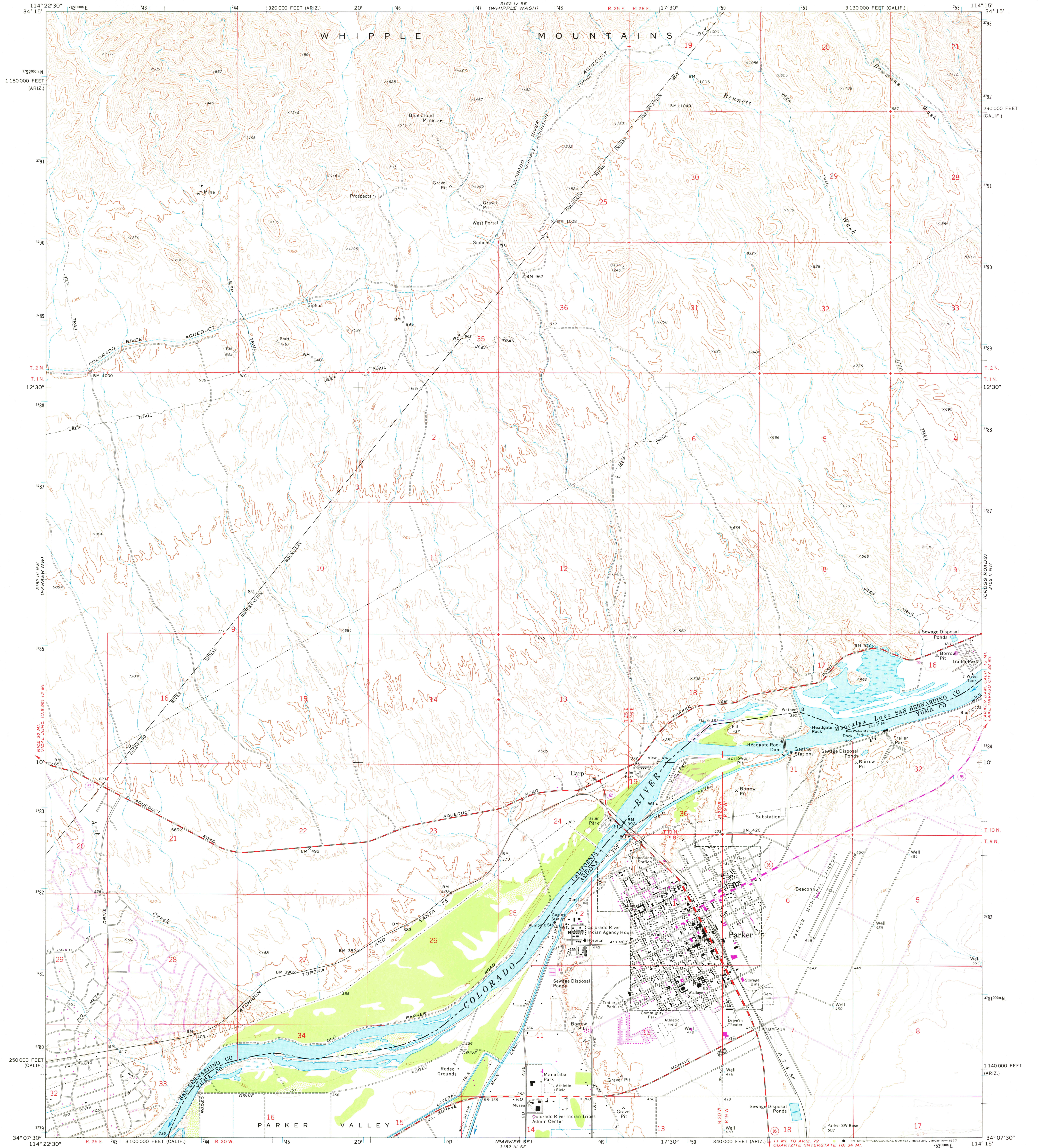
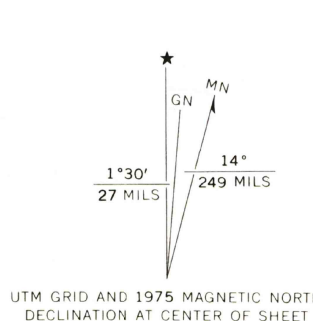


UNITED STATES
DEPARTMENT OF THE INTERIOR
GEOLOGICAL SURVEY

PARKER QUADRANGLE
ARIZONA—CALIFORNIA
7.5 MINUTE SERIES (TOPOGRAPHIC)
NE 1/4 PARKER 15' QUADRANGLE



Mapped, edited, and published by the Geological Survey
Control by USGS and NOS/NOAA
Topography by photogrammetric methods from aerial
photographs taken 1969. Field checked 1970
Polyconic projection. 1927 North American datum
10,000-foot grids based on California coordinate system, zone 5,
and Arizona coordinate system, west zone
1000-meter Universal Transverse Mercator grid ticks,
zone 11, shown in blue
Where omitted, land lines have not been established



SCALE 1:24,000
CONTOUR INTERVAL 40 FEET
DOTTED LINES REPRESENT 10-FOOT CONTOURS
NATIONAL GEODETIC VERTICAL DATUM OF 1929

THIS MAP COMPLIES WITH NATIONAL MAP ACCURACY STANDARDS
FOR SALE BY U. S. GEOLOGICAL SURVEY, DENVER, COLORADO 80225, OR RESTON, VIRGINIA 22092
A FOLDER DESCRIBING TOPOGRAPHIC MAPS AND SYMBOLS IS AVAILABLE ON REQUEST

ROAD CLASSIFICATION
Primary highway, hard surface
Secondary highway, hard surface
Unimproved road
Interstate Route
U. S. Route
State Route
Light-duty road, hard or improved surface
Unimproved road
Interstate Route
U. S. Route
State Route

Revisions shown in purple compiled by the Geological Survey from
aerial photographs taken 1975. This information not held by USGS

QUADRANGLE LOCATION

PARKER, ARIZ.—CALIF. 3900
NE 1/4 PARKER 15' QUADRANGLE
N3407.5—W11415.7.5
1970
PHOTOREVISED 1975
AMS 3152 III NE—SERIES V895

SEP 23 1977