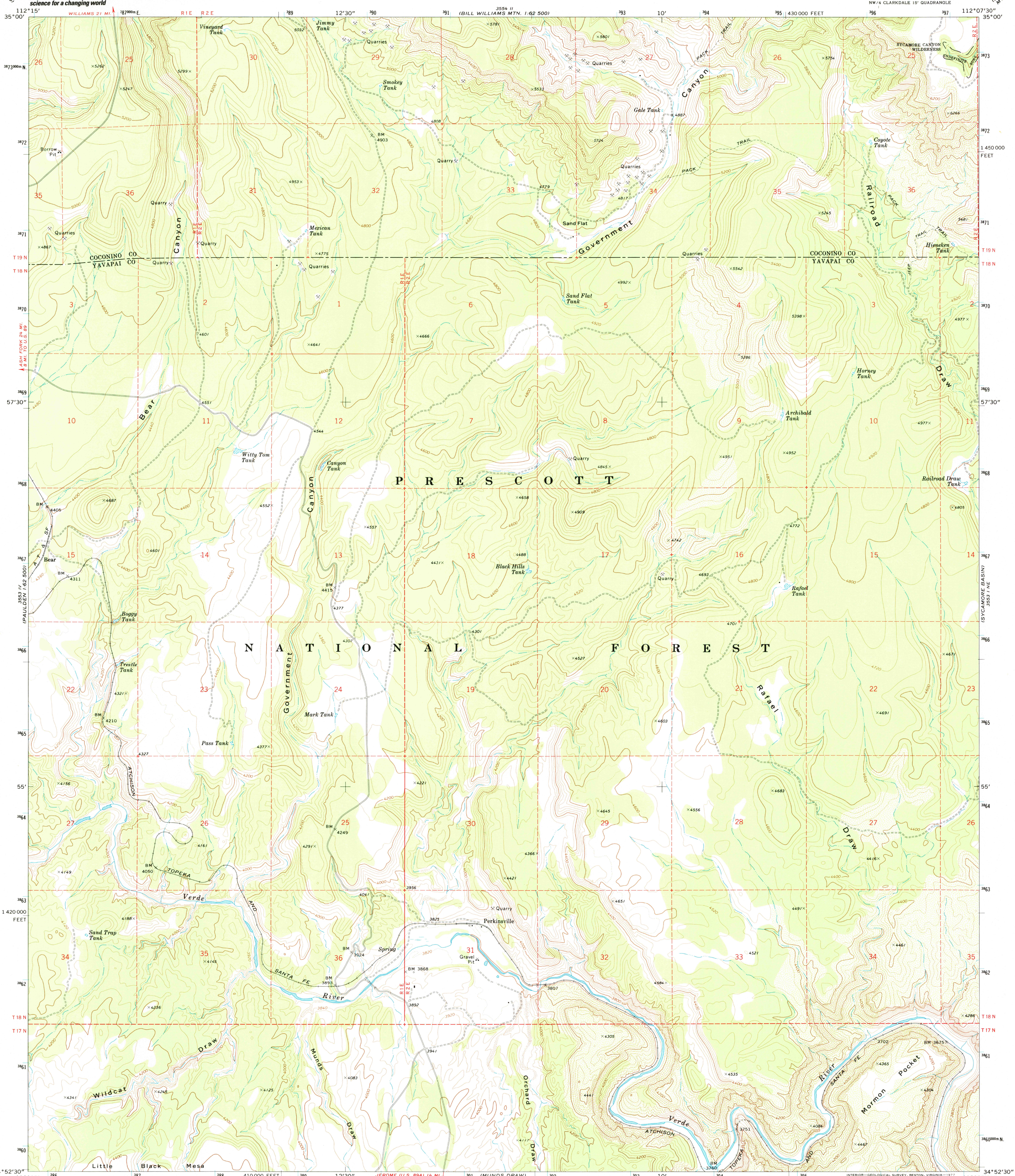




U.S. DEPARTMENT OF THE INTERIOR
U.S. GEOLOGICAL SURVEY

PERKINSVILLE QUADRANGLE
ARIZONA
7.5 MINUTE SERIES (TOPOGRAPHIC)

3554 II
WILLIAMS
1:62 500

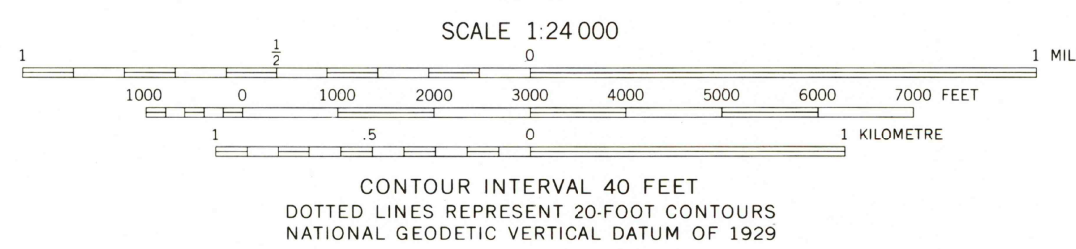
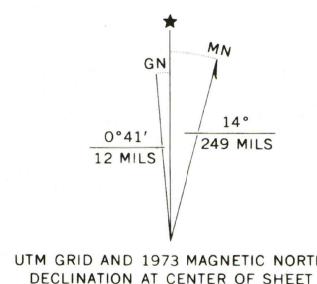


Mapped, edited, and published by the Geological Survey

Control by USGS and NOS/NOAA

Topography by photogrammetric methods from aerial photographs taken 1972. Field checked 1973

Projection and 10,000-foot grid ticks: Arizona coordinate system, central zone (transverse Mercator)
1000-metre Universal Transverse Mercator grid ticks, zone 12, shown in blue. 1927 North American datum
Where omitted, land lines have not been established



ROAD CLASSIFICATION	
Primary highway, hard surface	Light-duty road, hard or improved surface
Secondary highway, hard surface	Unimproved road
Interstate Route	U.S. Route
	State Route

RECEIVED
APR 3 0 2002

PERKINSVILLE, ARIZ.

NW 1/4 CLARKDALE 15' QUADRANGLE
N3452.5-W11207.5/7.5

1973

AMS 3553 I NW-SERIES V898

THIS MAP COMPLIES WITH NATIONAL MAP ACCURACY STANDARDS
FOR SALE BY U.S. GEOLOGICAL SURVEY, P.O. BOX 25286, DENVER, COLORADO 80225
A FOLDER DESCRIBING TOPOGRAPHIC MAPS AND SYMBOLS IS AVAILABLE ON REQUEST

