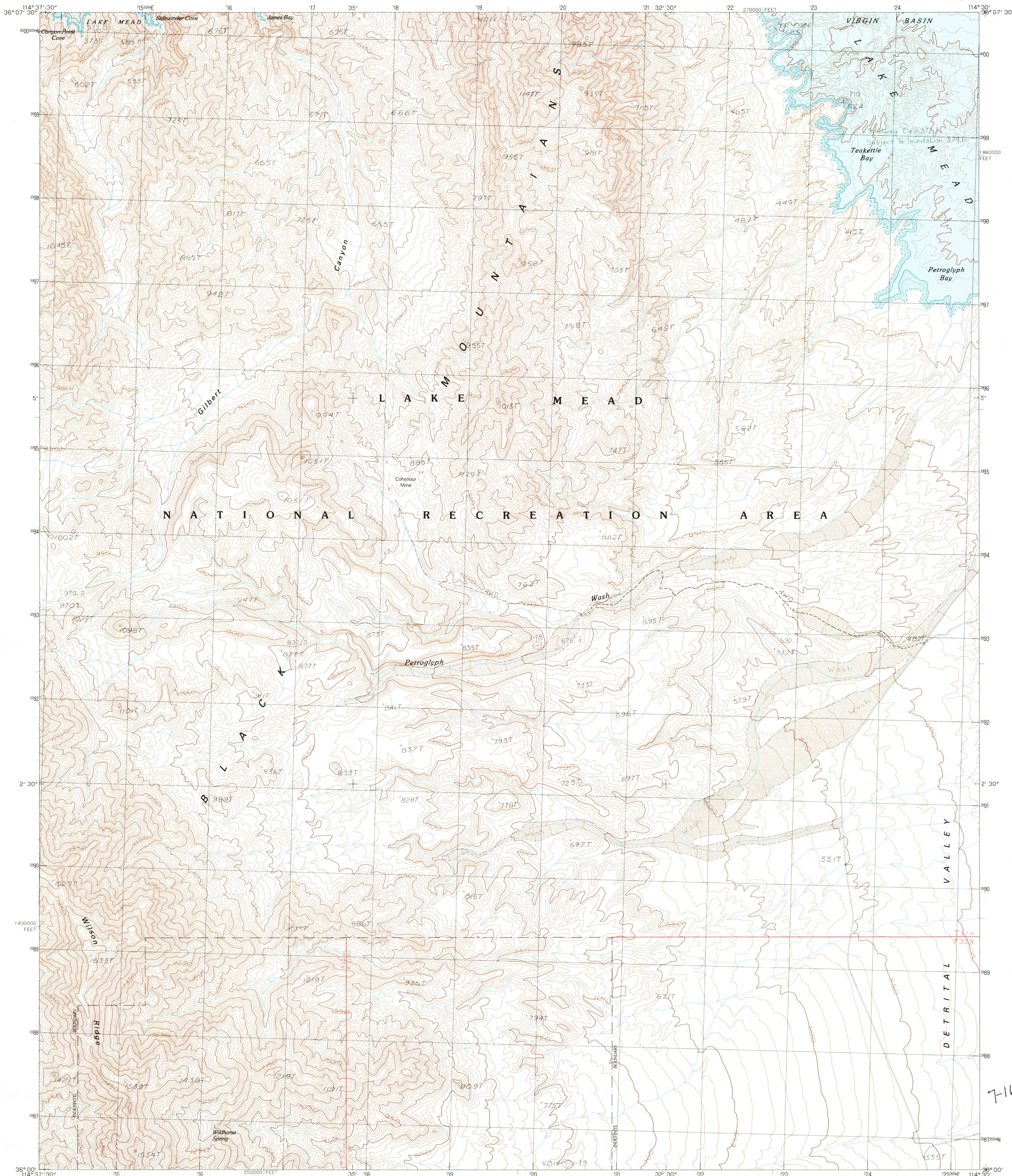


UNITED STATES
DEPARTMENT OF THE INTERIOR
GEOLOGICAL SURVEY

PETROGLYPH WASH QUADRANGLE
ARIZONA—MOHAVE CO.
7.5 MINUTE SERIES (TOPOGRAPHIC)

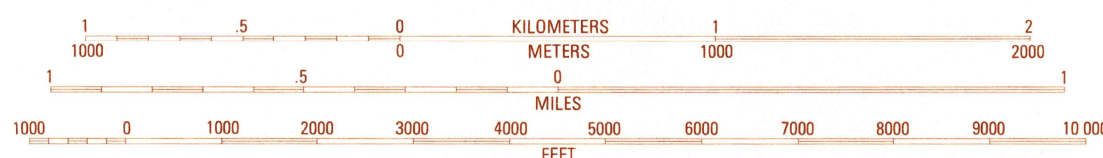


PRODUCED BY THE UNITED STATES GEOLOGICAL SURVEY
CONTROL BY USGS, NOS/NOAA
COMPILED FROM AERIAL PHOTOGRAPHS TAKEN 1973, 1978
FIELD CHECKED 1982 MAP EDITED 1983
PROJECTION UNIVERSAL TRANSVERSE MERCATOR
GRID: 1000-METER UNIVERSAL TRANSVERSE MERCATOR ZONE 11
10,000-FOOT STATE GRID TICKS ARIZONA, WEST ZONE
UTM GRID DECLINATION 126° EAST
1980 MAGNETIC NORTH DECLINATION 14° EAST
VERTICAL DATUM NATIONAL GEODETIC VERTICAL DATUM OF 1929
HORIZONTAL DATUM 1927 NORTH AMERICAN DATUM
To place on the predicted North American Datum of 1983,
move the projection lines as shown by dashed corner ticks
(4 meters north, 75 meters east)
There may be private inholdings within the boundaries of any
Federal and State Reservations shown on this map
Underwater contours compiled from USDA maps
originally mapped in 1935 at 1:12,000 scale
Where omitted, land lines have not been established
Areas covered by dashed light-blue pattern
are subject to controlled inundation

PROVISIONAL MAP
Produced from original
manuscript drawings. Infor-
mation shown as of date of
field check.

3

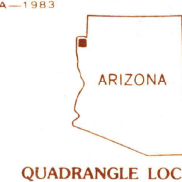
SCALE 1:24 000



CONTOUR INTERVAL 10 METERS

CONTROL ELEVATIONS SHOWN TO THE NEAREST 0.1 METER
OTHER ELEVATIONS SHOWN TO THE NEAREST METER
To convert meters to feet multiply by 3.2808
To convert feet to meters multiply by 0.3048

THIS MAP COMPLIES WITH NATIONAL MAP ACCURACY STANDARDS
FOR SALE BY U.S. GEOLOGICAL SURVEY, DENVER COLORADO 80225, OR RESTON, VIRGINIA 22092



QUADRANGLE LOCATION

1	2	3	1	Callville
2	3	4	2	Boulder Canyon
3	4	5	3	Middle Point
4	5	6	4	Hoover Dam
5	6	7	5	Bonelli Bay
6	7	8	6	Ringbolt Rapids
7	8	9	7	Mt. Wilson
8	9	10	8	Senator Mtn NW

ADJOINING 7.5 QUADRANGLE NAMES

CONTOURS AND ELEVATIONS IN METERS
ROAD LEGEND

Improved Road.....
Unimproved Road.....
Trail.....
Interstate Route U.S. Route State Route

PETROGLYPH WASH, ARIZ.
PROVISIONAL EDITION 1983

36114-A5-TM-024

RETURN TO:
USGS AND HISTORICAL MAP ARCHIVES