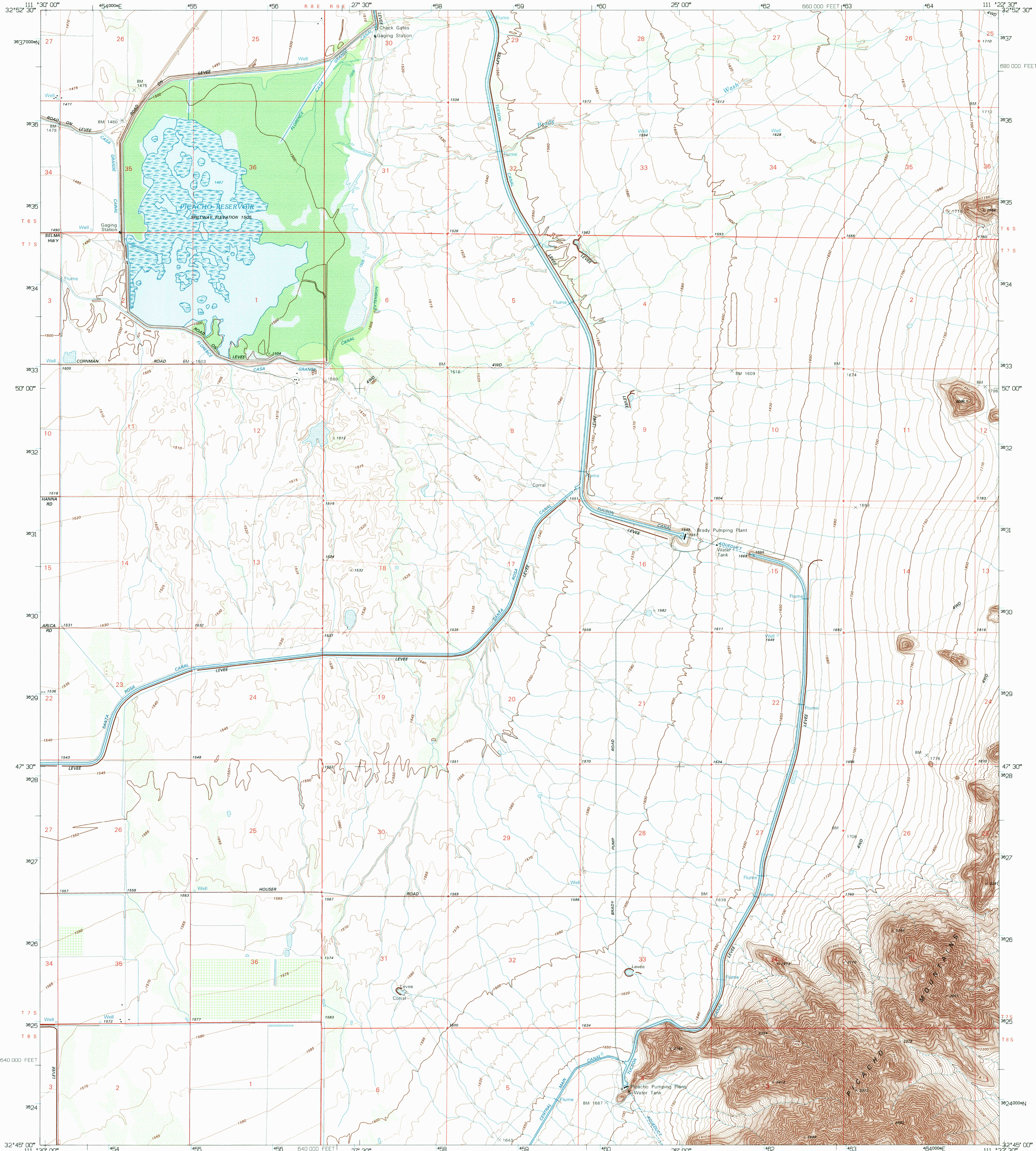
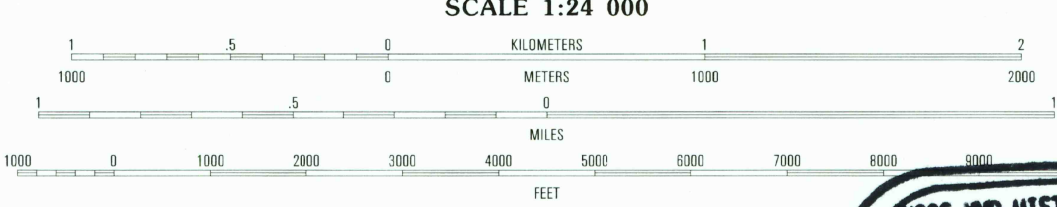
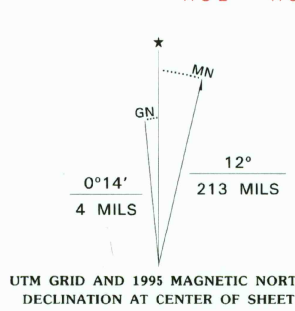


UNITED STATES
DEPARTMENT OF THE INTERIOR
GEOLOGICAL SURVEY

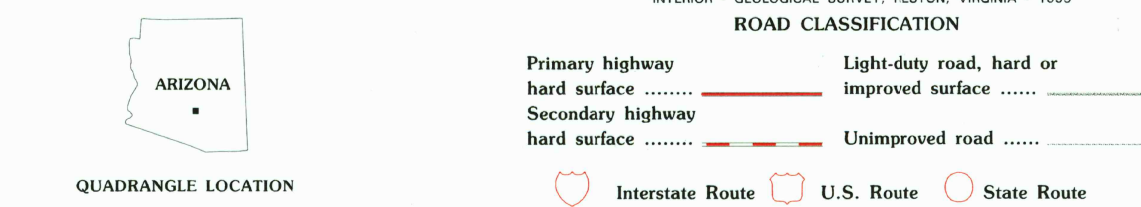
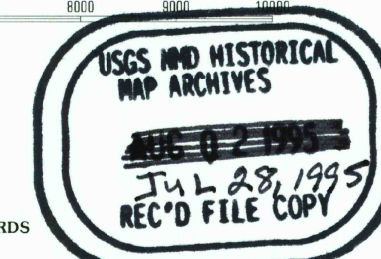
PICACHO RESERVOIR QUADRANGLE
ARIZONA-PINAL CO.
7.5-MINUTE SERIES (TOPOGRAPHIC)



Produced by the United States Geological Survey
Control by USGS and NOS/NOAA
Compiled from imagery dated 1963. Revised from
imagery dated 1990. PLSS and survey control
current as of 1992. Field checked 1992. Map edited 1995.
Contours and land elevations have not been revised and
may conflict with other content
North American Datum of 1927 (NAD 27). Projection and
blue 1000-meter ticks: Universal Transverse Mercator, zone 12
10 000-foot ticks: Arizona Coordinate System, central zone
North American Datum of 1983 (NAD 83) is shown by dashed
corner ticks. The values of the shift between NAD 27
and NAD 83 for 7.5-minute intersections are obtainable from
National Geodetic Survey NADCON software
Areas covered by dashed light-blue pattern
are subject to controlled inundation
Fine red dashed lines indicate selected fence and field lines where
generally visible on aerial photographs. This information is unchecked
This map covers an active subsidence area



SCALE 1:24 000
CONTOUR INTERVAL 10 FEET
SUPPLEMENTARY CONTOUR INTERVAL 5 FEET
NATIONAL GEODETIC VERTICAL DATUM OF 1929
TO CONVERT FEET TO METERS MULTIPLY BY 0.3048
TO CONVERT METERS TO FEET MULTIPLY BY 3.2808
THIS MAP COMPLIES WITH NATIONAL MAP ACCURACY STANDARDS
FOR SALE BY U.S. GEOLOGICAL SURVEY
DENVER, COLORADO 80225, OR RESTON, VIRGINIA 22092
A FOLDER DESCRIBING TOPOGRAPHIC MAPS AND SYMBOLS IS AVAILABLE ON REQUEST



1	2	3	1 Coolidge
4	5	2 Valley Farms	
6	7	3 Cactus Forest	
		4 Eloy North	
		5 Picacho Reservoir SE	
		6 Eloy South	
		7 Newman Peak	
		8 Picacho Pass	

ROAD CLASSIFICATION
Primary highway
hard surface
Secondary highway
hard surface
Light-duty road, hard or
improved surface
Unimproved road
Interstate Route
U.S. Route
State Route

PICACHO RESERVOIR, AZ
32111-G4-TF-024
1992
DMA 3749 IV SW-SERIES V898

