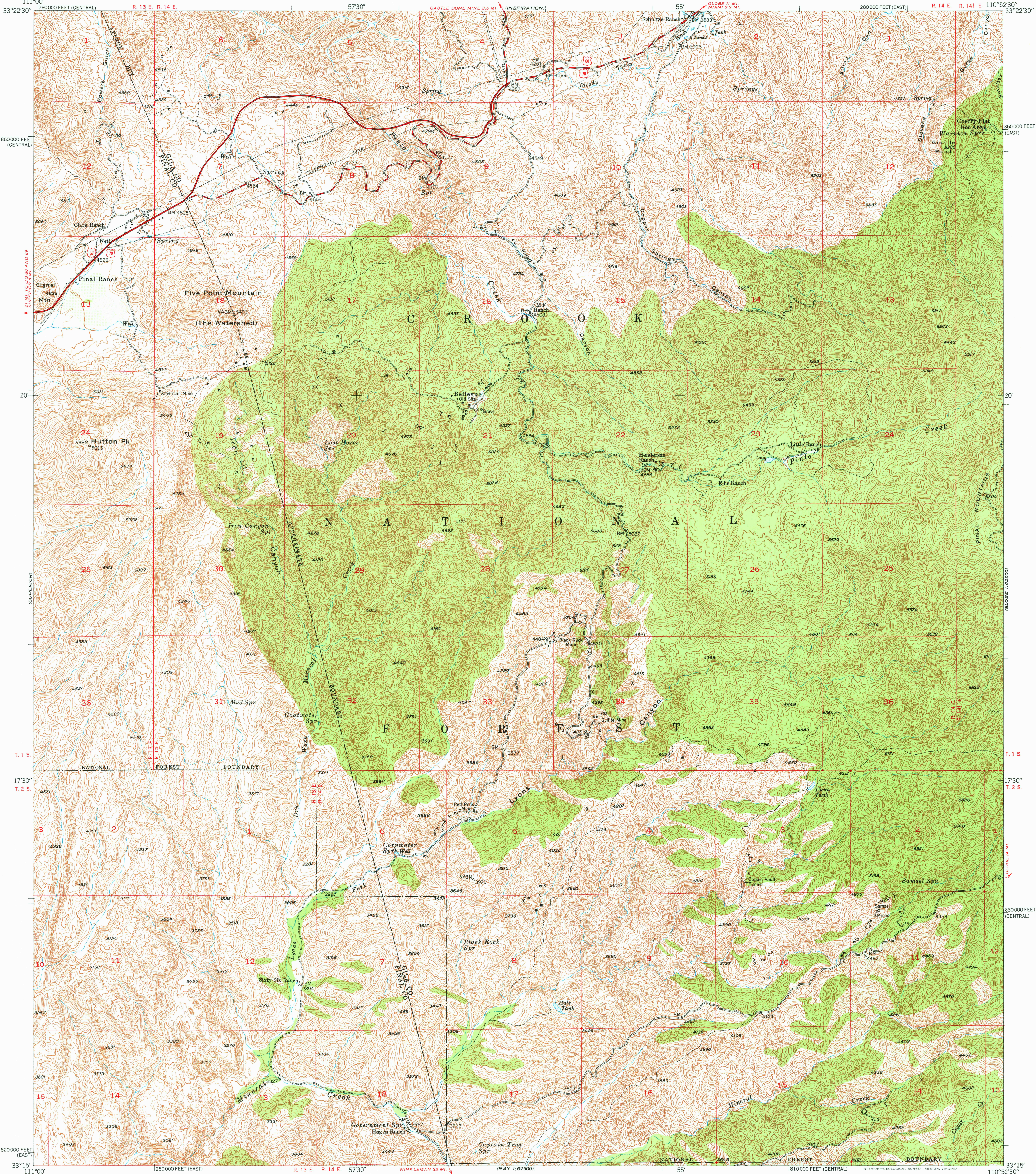


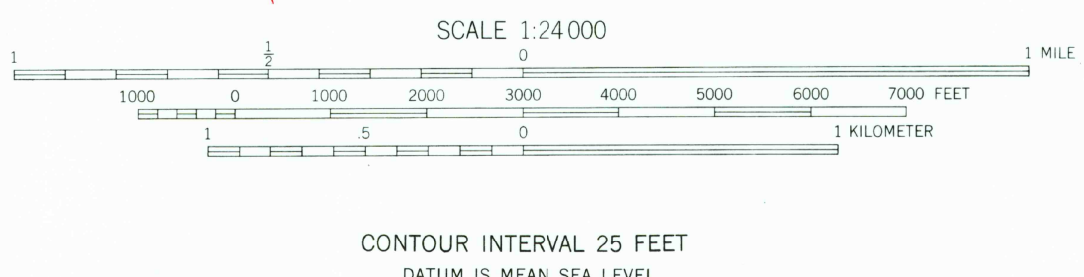
UNITED STATES
DEPARTMENT OF THE INTERIOR
GEOLOGICAL SURVEY

PINAL RANCH QUADRANGLE
ARIZONA
7.5 MINUTE SERIES (TOPOGRAPHIC)



Maped, edited, and published by the Geological Survey
Control by USGS and USC&GS
Topography from aerial photographs by multiplex methods
Aerial photographs taken 1943. Field check 1948
Polyconic projection. 1927 North American datum
10,000-foot grid based on Arizona coordinate system,
east and central zones
Unchecked elevations are shown in brown

TRUE NORTH
MAGNETIC NORTH
APPROXIMATE MEAN
DECLINATION, 1948



ROAD CLASSIFICATION
HARD-SURFACE ALL WEATHER ROADS DRY WEATHER ROADS
Heavy-duty CLANE 16 LANE Improved dirt
Medium-duty CLANE 16 LANE Unimproved dirt
Loose-surface, graded, or narrow hard-surface
U. S. Route State Route

THIS MAP COMPLIES WITH NATIONAL MAP ACCURACY STANDARDS
FOR SALE BY U. S. GEOLOGICAL SURVEY, DENVER, COLORADO OR WASHINGTON 25, D. C.
A FOLDER DESCRIBING TOPOGRAPHIC MAPS AND SYMBOLS IS AVAILABLE ON REQUEST

USGS
Historical File
Topographic Division
PINAL RANCH, ARIZ.
N3315-W11052.5/7.5
1948
NOV 15 1978
2300