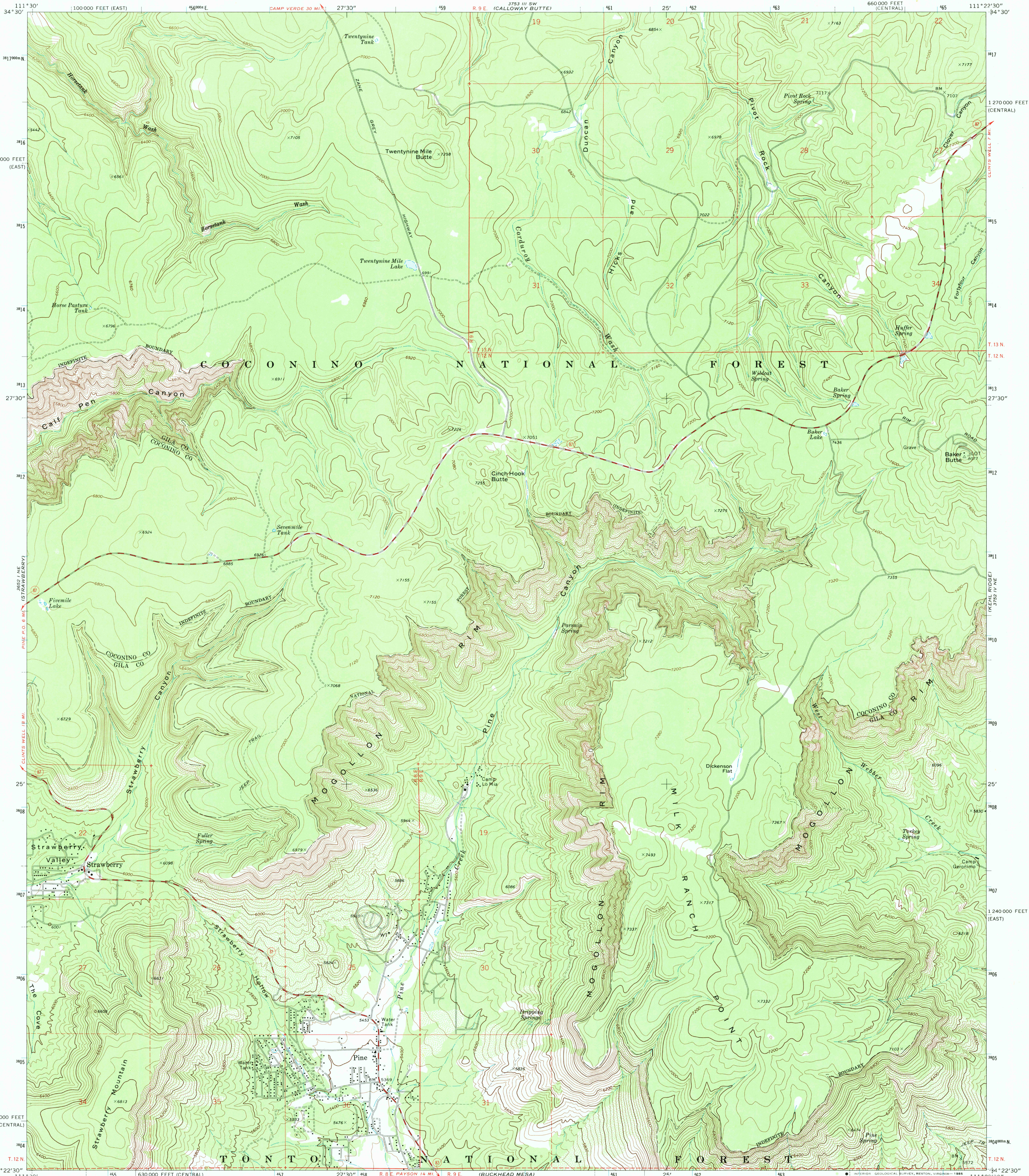
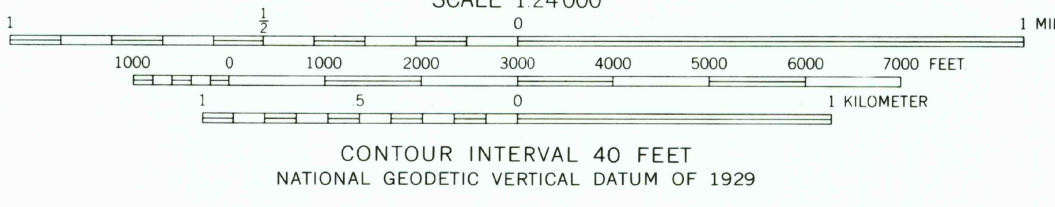
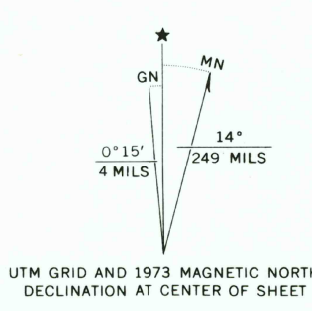


UNITED STATES  
DEPARTMENT OF THE INTERIOR  
GEOLOGICAL SURVEY

PINE QUADRANGLE  
ARIZONA  
7.5 MINUTE SERIES (TOPOGRAPHIC)



Mapped by the U. S. Forest Service  
Edited and published by the Geological Survey  
Control by USGS, USC&GS, and USFS  
Topography by photogrammetric methods from aerial  
photographs taken 1965. Field checked by USGS 1973  
Projection: Arizona coordinate system, central zone  
(transverse Mercator)  
10,000-foot grid ticks based on Arizona coordinate  
system, central and east zones  
1000-meter Universal Transverse Mercator grid ticks,  
zone 12, shown in blue. 1927 North American datum  
To place on the predicted North American Datum 1983  
move the projection lines 0 meters south and  
64 meters east as shown by dashed corner ticks  
There may be private inholdings within the boundaries of  
the National or State reservations shown on this map



THIS MAP COMPLIES WITH NATIONAL MAP ACCURACY STANDARDS  
FOR SALE BY U. S. GEOLOGICAL SURVEY, DENVER, COLORADO 80225, OR RESTON, VIRGINIA 22092  
A FOLDER DESCRIBING TOPOGRAPHIC MAPS AND SYMBOLS IS AVAILABLE ON REQUEST



ROAD CLASSIFICATION  
Primary highway, hard surface ————  
Secondary highway, hard surface ————  
Light-duty road, hard or improved surface ————  
Unimproved road ————  
Interstate Route ————  
U. S. Route ————  
State Route ————

PINE, ARIZ.  
NW 1/4 PINE 15' QUADRANGLE  
34111-D4-TF-024

1973

DMA 3752 IV NW—SERIES V898