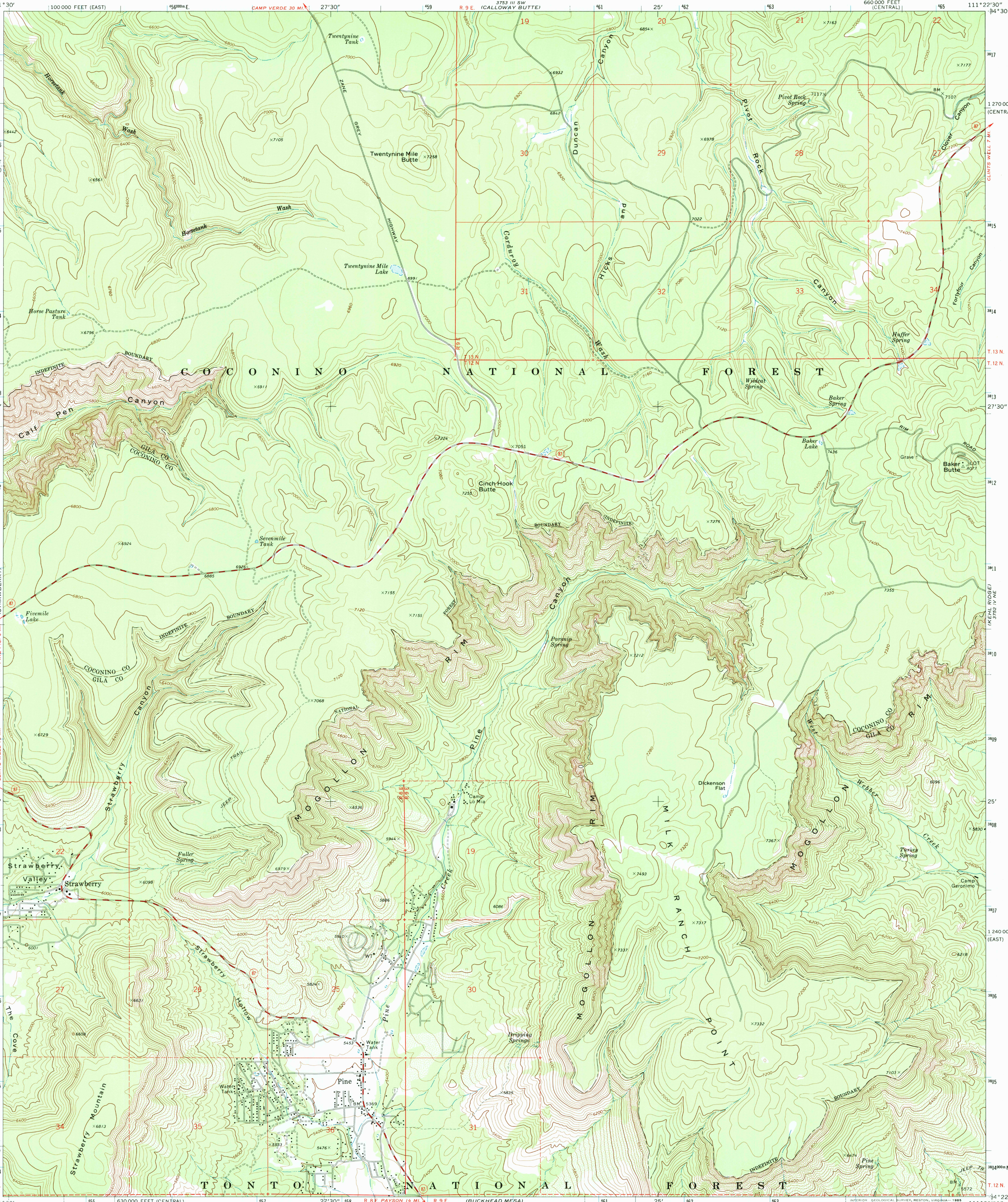
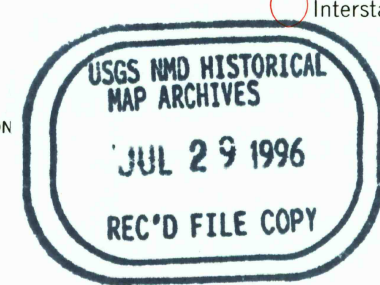
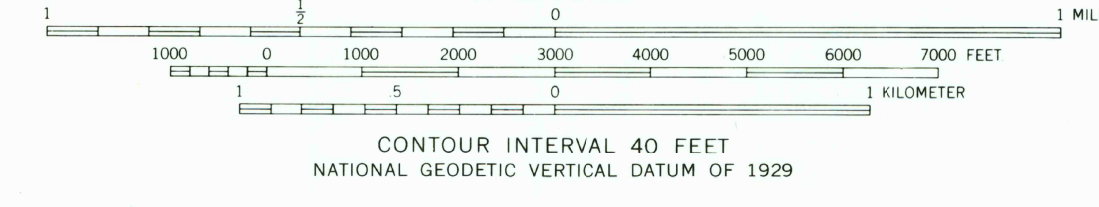
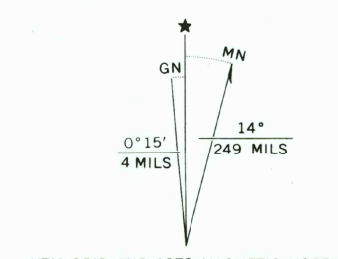


UNITED STATES
DEPARTMENT OF THE INTERIOR
GEOLOGICAL SURVEY

PINE QUADRANGLE
ARIZONA
7.5 MINUTE SERIES (TOPOGRAPHIC)



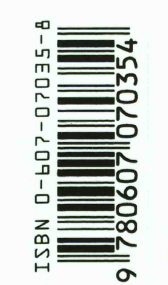
Mapped by the U. S. Forest Service
Edited and published by the Geological Survey
Control by USGS, USC&GS, and USFS
Topography by photogrammetric methods from aerial
photographs taken 1965. Field checked by USGS 1973
Projection: Arizona coordinate system, central zone
(transverse Mercator)
10,000-foot grid ticks based on Arizona coordinate
system, central and east zones
1000-meter Universal Transverse Mercator grid ticks,
zone 12, shown in blue. 1927 North American datum
To place on the predicted North American Datum 1983
move the projection lines 0 meters south and
64 meters east as shown by dashed corner ticks
There may be private inholdings within the boundaries of
the National or State reservations shown on this map



ROAD CLASSIFICATION

Primary highway, hard surface	Light-duty road, hard or improved surface
Secondary highway, hard surface	Unimproved road
Interstate Route	U. S. Route
	State Route

PINE, ARIZ.
NW 1/4 PINE 15' QUADRANGLE
34111-D4-TF-024
1973
DMA 3752 IV NW--SERIES V898



THIS MAP COMPLIES WITH NATIONAL MAP ACCURACY STANDARDS
FOR SALE BY U. S. GEOLOGICAL SURVEY, DENVER, COLORADO 80225, OR RESTON, VIRGINIA 22092
A FOLDER DESCRIBING TOPOGRAPHIC MAPS AND SYMBOLS IS AVAILABLE ON REQUEST