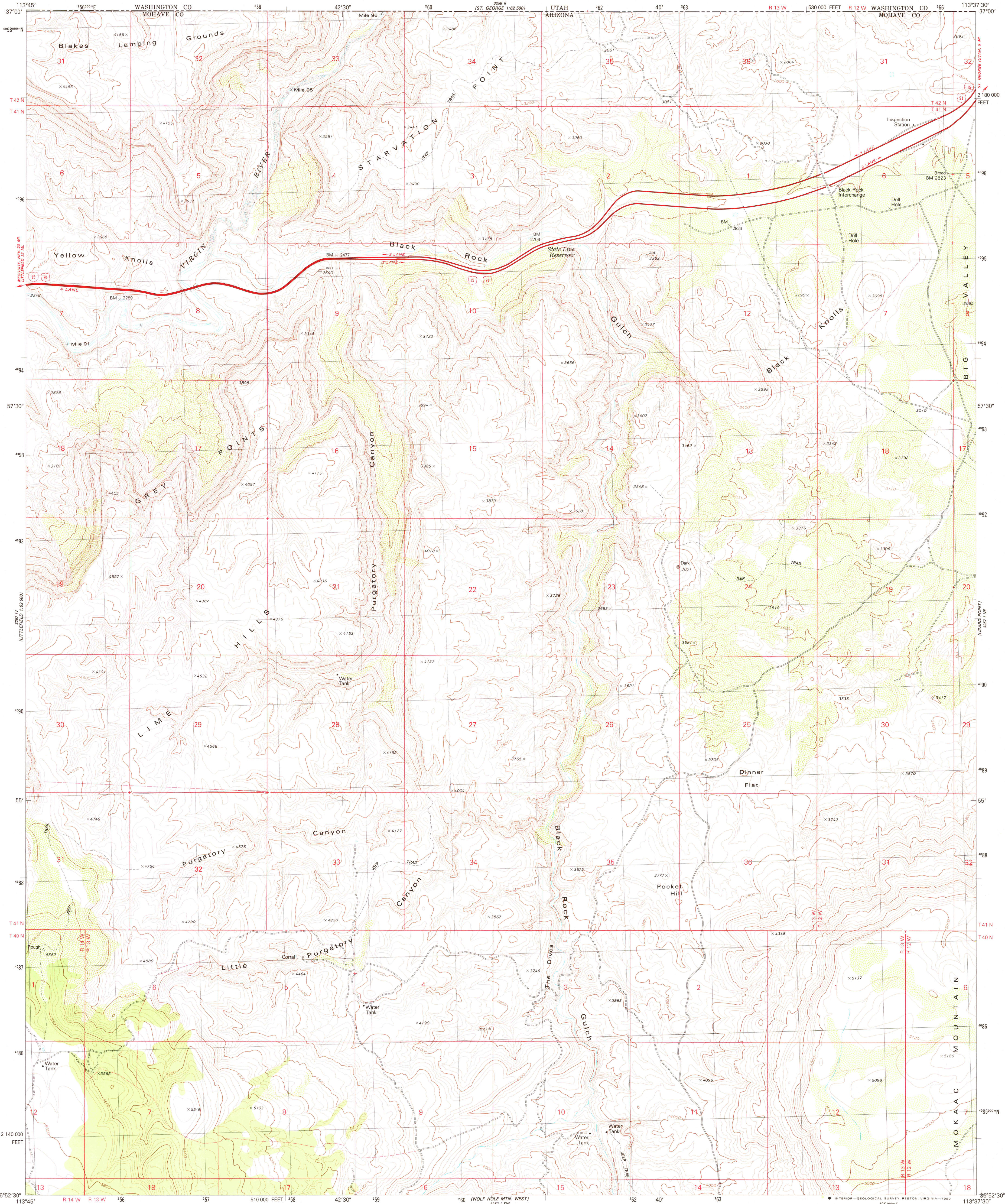


UNITED STATES
DEPARTMENT OF THE INTERIOR
GEOLOGICAL SURVEY

PURGATORY CANYON QUADRANGLE
ARIZONA-MOHAVE CO.

7.5 MINUTE SERIES (TOPOGRAPHIC)



Mapped, edited, and published by the Geological Survey

Control by USGS and NOS/NOAA

Topography by photogrammetric methods from aerial
photographs taken 1974. Field checked 1975
Map edited 1979

Projection and 10,000-foot grid ticks: Arizona coordinate
system, west zone (transverse Mercator)
1000-meter Universal Transverse Mercator grid, zone 12

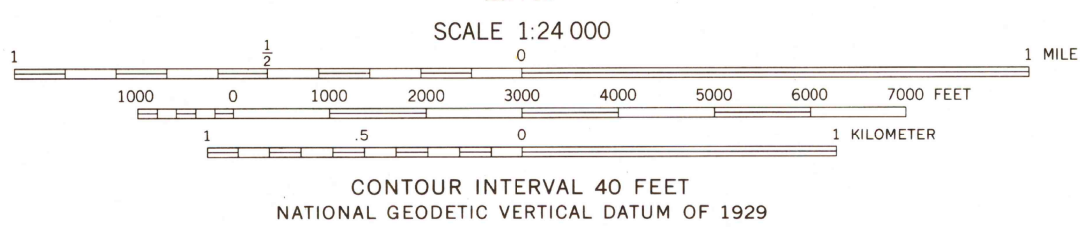
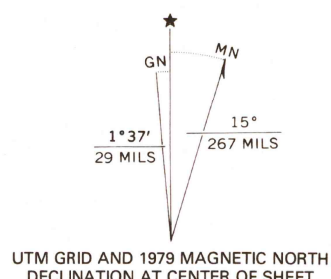
1927 North American Datum

To place on the predicted North American Datum 1983

move the projection lines 6 meters north and

70 meters east as shown by dashed corner ticks

Fine red dashed lines indicate selected fence and field lines where
generally visible on aerial photographs. This information is unchecked



ROAD CLASSIFICATION	
Primary highway, hard surface	Light-duty road, hard or improved surface
Secondary highway, hard surface	Unimproved road
Interstate Route	U. S. Route
	State Route

PURGATORY CANYON, ARIZ.
N3652.5-W11337.5/7.5

1979

DMA 3257.1 NW-SERIES V988

MAY - 5 1990

2750