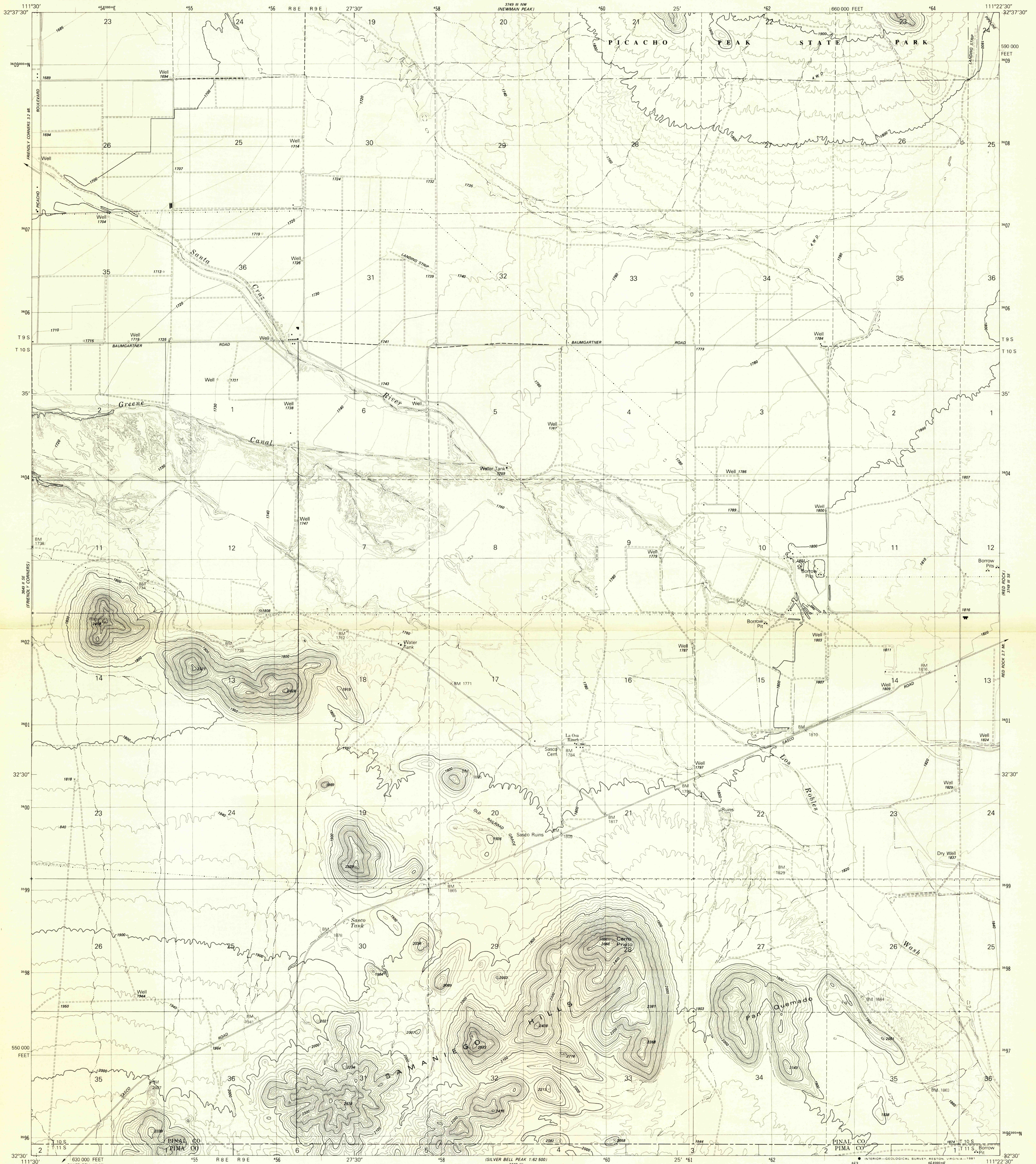


UNITED STATES  
DEPARTMENT OF THE INTERIOR  
GEOLOGICAL SURVEY

SAMANIEGO HILLS QUADRANGLE  
ARIZONA  
7.5 MINUTE SERIES (TOPOGRAPHIC)  
SW/4 RED ROCK 15' QUADRANGLE



Mapped, edited, and published by the Geological Survey  
Control by USGS and NOS/NOAA

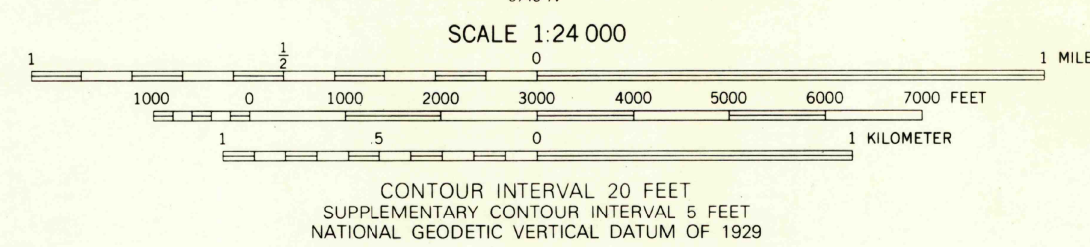
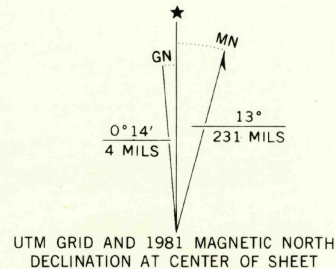
Topography by photogrammetric methods from aerial  
photographs taken 1976. Field checked 1977. Map edited 1981

Projection and 10,000-foot grid ticks: Arizona coordinate  
system, central zone (transverse Mercator)  
1000-meter Universal Transverse Mercator grid, zone 12  
1927 North American Datum

To place on the predicted North American Datum 1983  
move the projection lines 4 meters south and  
63 meters east as shown by dashed corner ticks

Portions of this map lie within a subsidence area  
Vertical control based on latest available adjustment

There may be private inholdings within the boundaries of  
the National or State reservations shown on this map



ROAD CLASSIFICATION  
Primary highway, hard surface  
Secondary highway, hard surface  
Unimproved road  
Interstate Route  
U. S. Route  
State Route

SAMANIEGO HILLS, ARIZ.  
SW/4 RED ROCK 15' QUADRANGLE  
N3230-W11122.5/7.5

1981  
DMA 3749 III SW-SERIES V898

THIS MAP COMPLIES WITH NATIONAL MAP ACCURACY STANDARDS  
FOR SALE BY U. S. GEOLOGICAL SURVEY, DENVER, COLORADO 80225, OR RESTON, VIRGINIA 22092  
A FOLDER DESCRIBING TOPOGRAPHIC MAPS AND SYMBOLS IS AVAILABLE ON REQUEST

NOTE:

This map is now being prepared for final publication. One of these advance prints may be used to submit your comments and suggestions. Of special interest are comments concerning factual errors relating to spelling and application of names, and they should be accompanied by supporting evidence concerning local usage, spelling, name origin, etc. Changes in cultural detail which have occurred since the field check cannot be incorporated in this edition. Please sign and return your marked copy within 10 days. If no comments, both copies may be retained for your use. Additional prints of this map are available at \$1.25 each.  
CHIEF, WESTERN MAPPING CENTER, U. S. GEOLOGICAL SURVEY, 345 MIDDLEFIELD ROAD, MENLO PARK, CA 94025

Signature

Title

Organization

Address