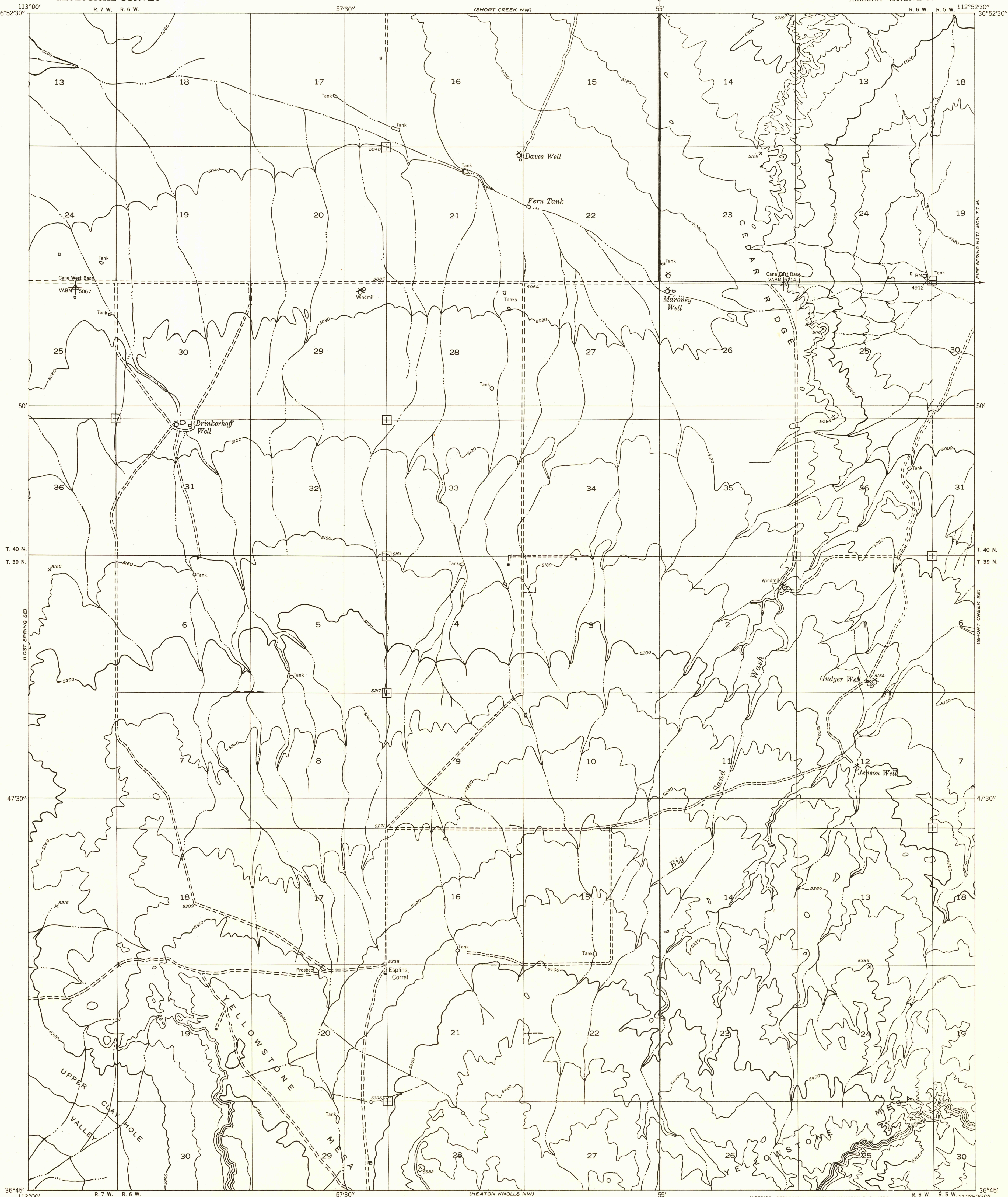


DEPARTMENT OF THE INTERIOR
GEOLOGICAL SURVEY

Preliminary edition
Pending completion of 1:62,500 scale
15 minute maps covering this area.

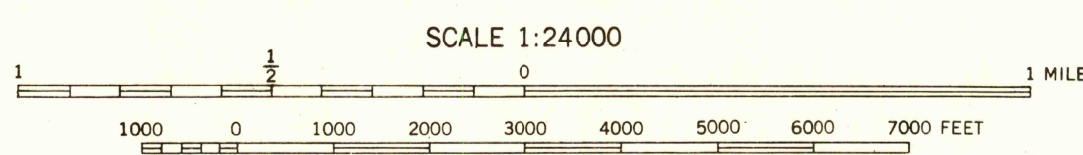
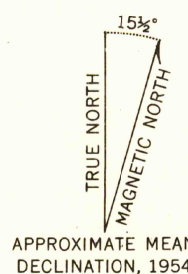
SHORT CREEK SW QUADRANGLE
ARIZONA—MOHAVE CO.



Mapped by the Geological Survey 1954

Topography by multiplex methods from
aerial photographs taken 1953

Symbols and other detail herein
drawn for 1:62,500 scale publication



CONTOUR INTERVAL 40 FEET
DATUM IS MEAN SEA LEVEL

ROAD CLASSIFICATION
Improved ——— Unimproved - - - - -

SHORT CREEK SW, ARIZ.
N3645-W11252.5/7.5