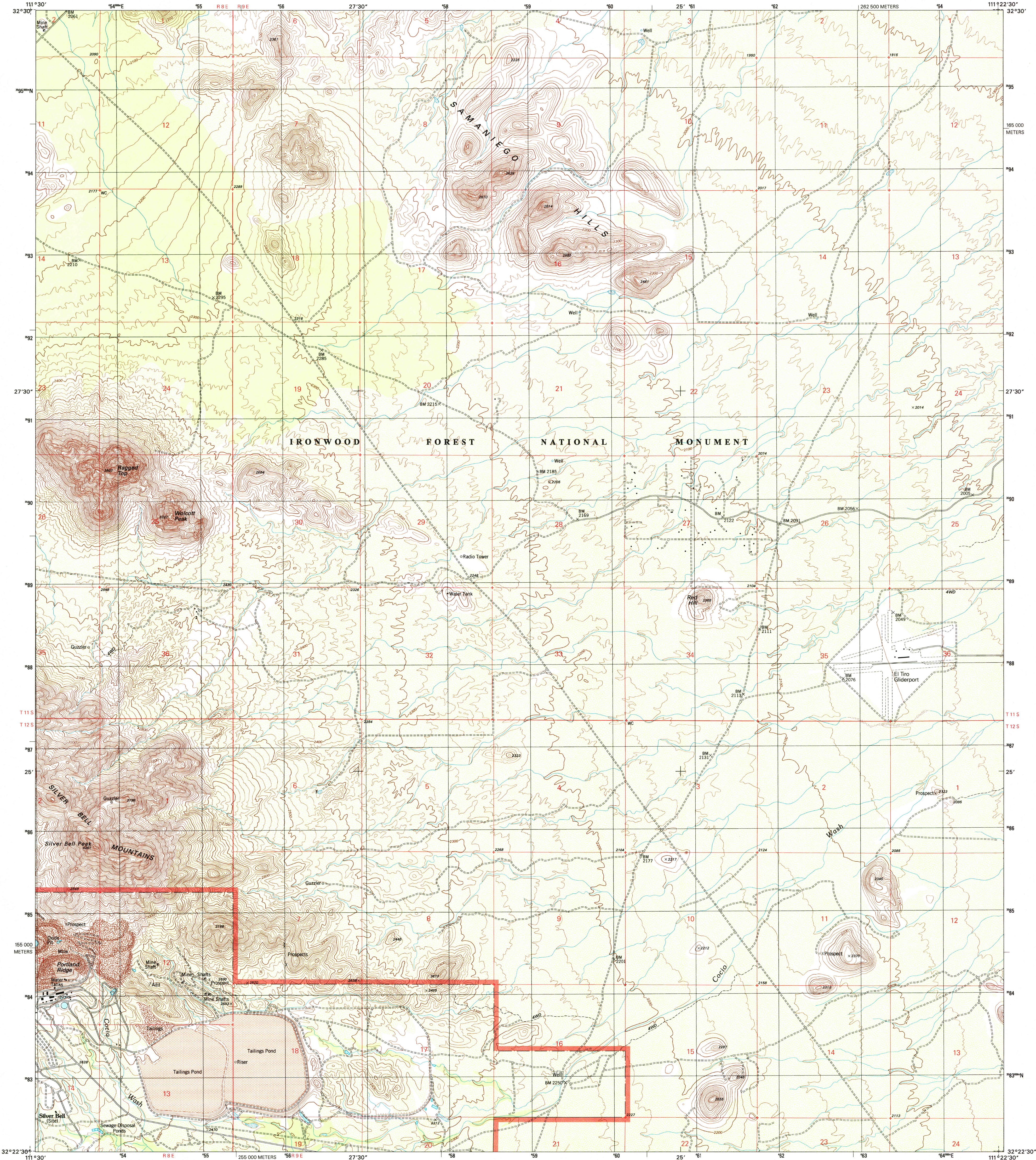


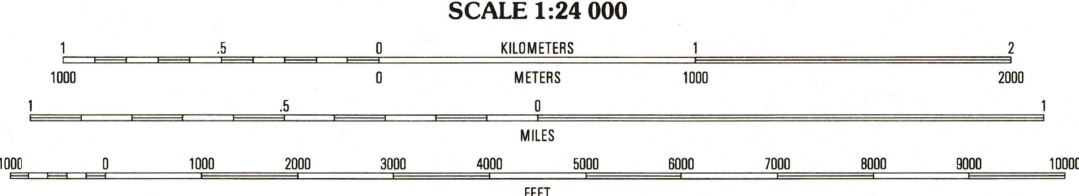
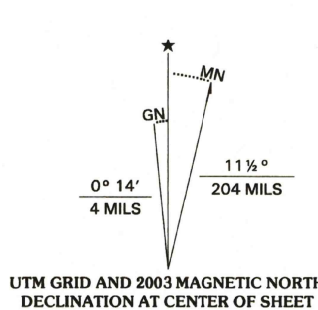


U.S. DEPARTMENT OF THE INTERIOR  
U.S. GEOLOGICAL SURVEY

SILVER BELL EAST QUADRANGLE  
ARIZONA-PIMA CO.  
7.5-MINUTE SERIES (TOPOGRAPHIC)



Produced by the United States Geological Survey  
Topography compiled 1958. Planimetry derived from imagery taken 1996 and other sources. Public Land Survey System and survey control current as of 1985. Boundaries current as of 2002  
North American Datum of 1983 (NAD 83). Projection and 1000-meter grid: Universal Transverse Mercator, zone 12  
2 500-meter ticks: Arizona Coordinate System of 1983 (central zone)  
North American Datum of 1927 (NAD 27) is shown by dashed corner ticks. The values of the shift between NAD 83 and NAD 27 for 7.5-minute intersections are obtainable from National Geodetic Survey NADCON software  
There may be private inholdings within the boundaries of the National or State reservations shown on this map  
Houses of worship, schools, and other labeled buildings verified 1985



CONTOUR INTERVAL 20 FEET  
NATIONAL GEODETIC VERTICAL DATUM OF 1929  
(TO CONVERT ELEVATIONS TO THE NORTH AMERICAN VERTICAL DATUM OF 1988, ADD 2 FEET)  
TO CONVERT FROM FEET TO METERS, MULTIPLY BY 0.3048

THIS MAP COMPLIES WITH NATIONAL MAP ACCURACY STANDARDS  
FOR SALE BY U.S. GEOLOGICAL SURVEY, P.O. BOX 25286, DENVER, COLORADO 80225  
A FOLDER DESCRIBING TOPOGRAPHIC MAPS AND SYMBOLS IS AVAILABLE ON REQUEST



QUADRANGLE LOCATION

1	2	3
4	5	6
7	8	9

- 1 Friendly Corners
- 2 Samaniego Hills
- 3 Red Rock
- 4 Silver Bell West
- 5 West of Marana
- 6 Kohi Kohl Hill
- 7 Waterman Peak
- 8 West of Aza

ADJOINING 7.5' QUADRANGLES

ROAD CLASSIFICATION  
Primary highway  
hard surface .....  
Secondary highway  
hard surface .....  
Light-duty road, hard or  
improved surface .....  
Unimproved road .....

Interstate Route U.S. Route State Route

JUN 26 2003  
SILVER BELL EAST, AZ  
1996

NIMA 3748 IV NW-SERIES V898

