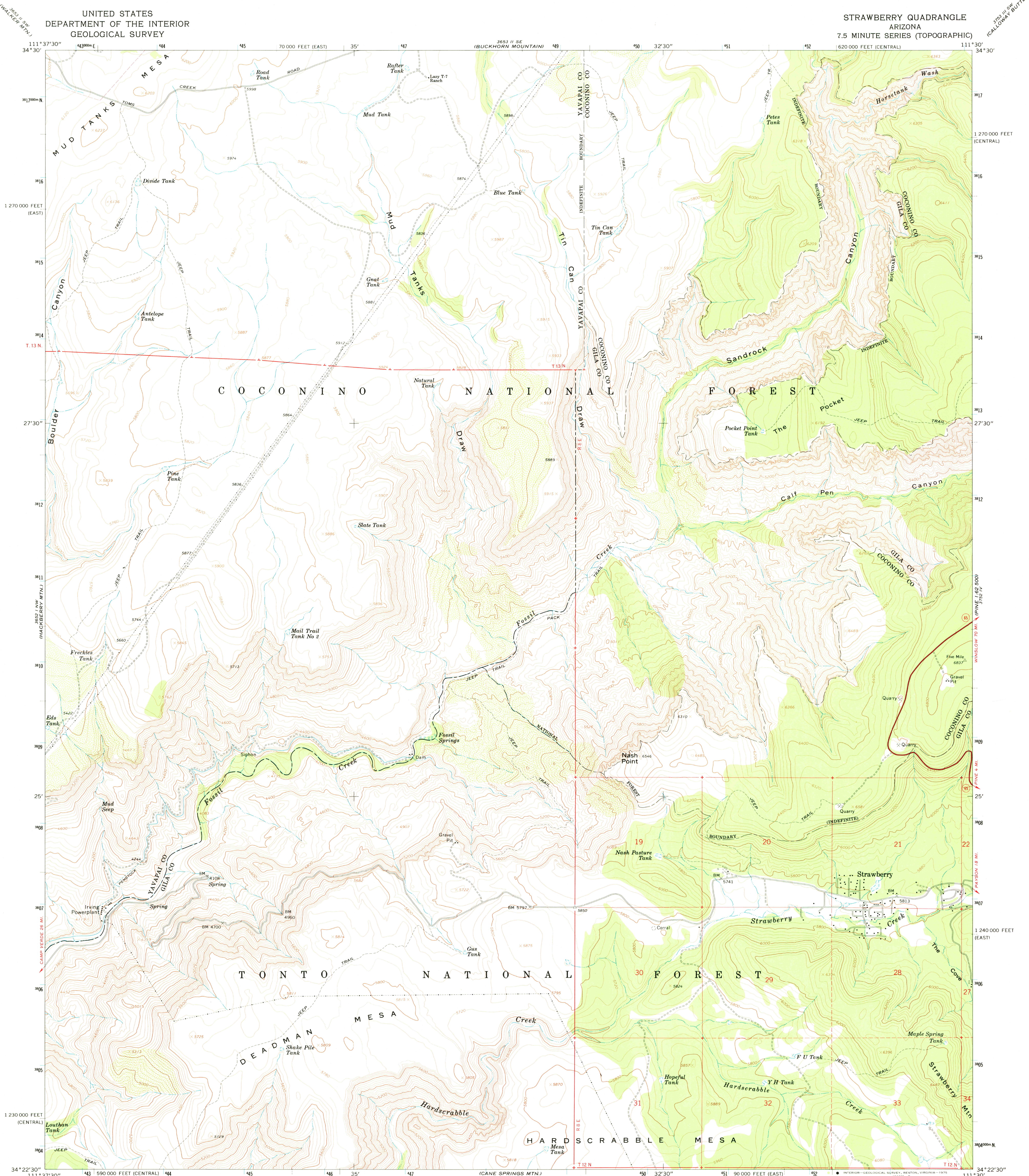
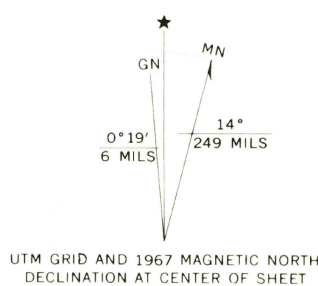


UNITED STATES
DEPARTMENT OF THE INTERIOR
GEOLOGICAL SURVEY

STRAWBERRY QUADRANGLE
ARIZONA
7.5 MINUTE SERIES (TOPOGRAPHIC)



Mapped, edited, and published by the Geological Survey
Control by USGS and USC&GS
Topography by photogrammetric methods from aerial
photographs taken 1965. Field checked 1967
Polyconic projection. 1927 North American datum
10,000-foot grids based on Arizona coordinate system,
central and east zones
1000-metre Universal Transverse Mercator grid ticks,
zone 12, shown in blue
Fine red dashed lines indicate selected fence lines
Where omitted, land lines have not been established



CONTOUR INTERVAL 40 FEET
DOTTED LINES REPRESENT 20-FOOT CONTOURS
NATIONAL GEODETIC VERTICAL DATUM OF 1929



USGS
HISTORICAL FILE
TOPOGRAPHIC DIVISION

STRAWBERRY, ARIZ.
N3422.5-W11130.7.5

1967

AMS 3652 I NE-SERIES V898

4080