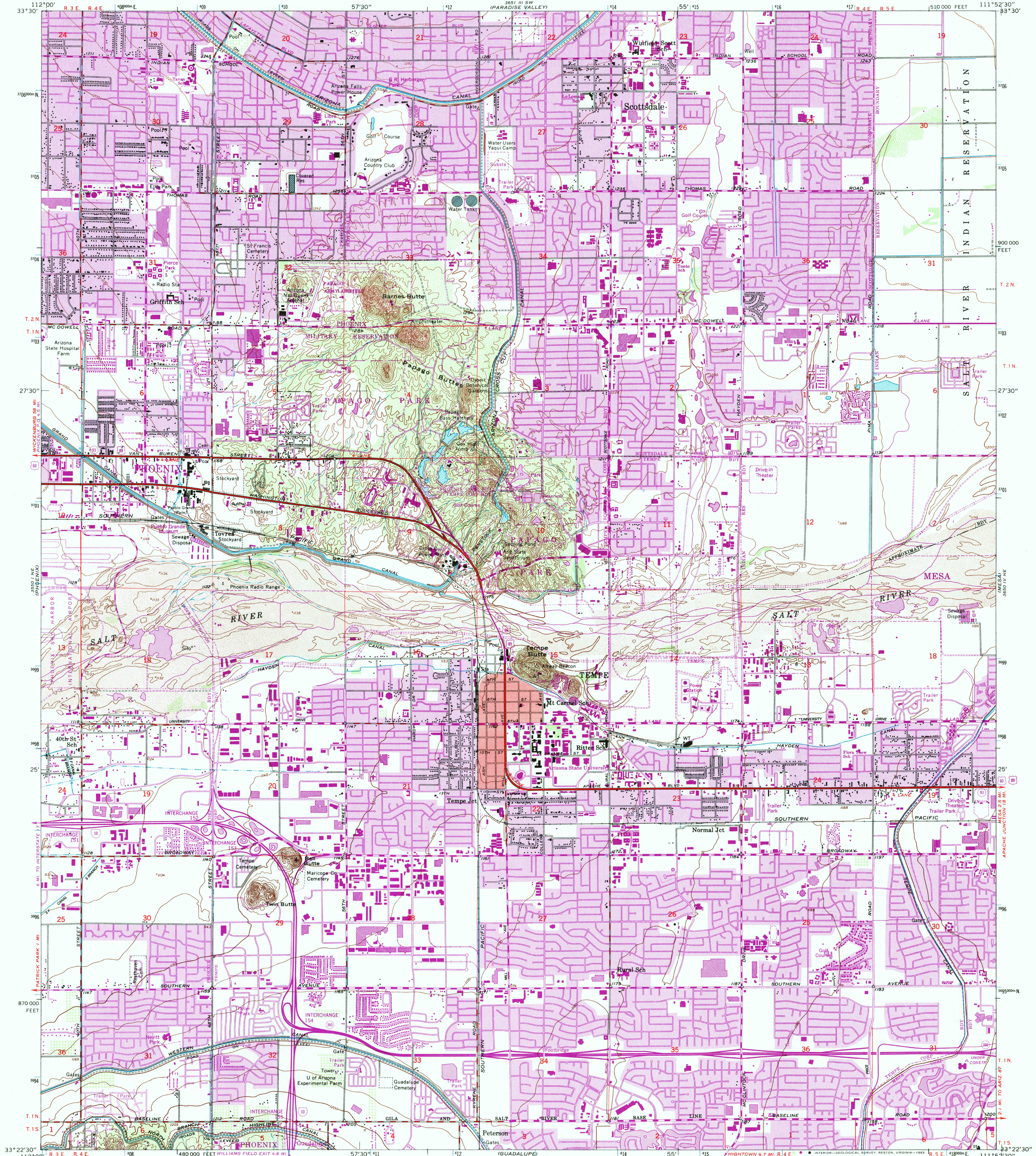


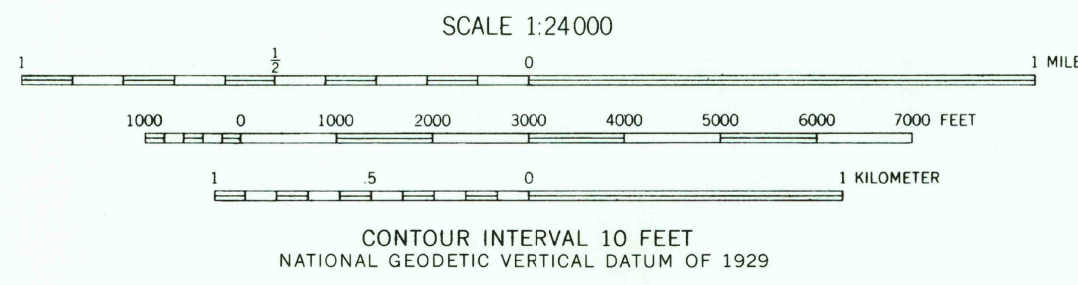
UNITED STATES  
DEPARTMENT OF THE INTERIOR  
GEOLOGICAL SURVEY

TEMPE QUADRANGLE  
ARIZONA—MARICOPA CO.  
7.5 MINUTE SERIES (TOPOGRAPHIC)



Map by the Army Map Service  
Published for civil use by the Geological Survey  
Control by USGS, NOS/NOAA and USCE  
Topography by photogrammetric methods from aerial  
photographs taken 1951. Field checked 1952  
Polyconic projection. 10,000-foot grid ticks based on  
Arizona coordinate system, central zone  
1000-meter Universal Transverse Mercator grid ticks,  
zone 12, shown in blue. 1927 North American Datum  
To place on the predicted North American Datum 1983  
move the projection lines 2 meters south and  
65 meters east as shown by dashed corner ticks  
Red tint indicates area in which only landmark buildings are shown  
There may be private inholdings within the boundaries of  
the National or State reservations shown on this map

Revisions shown in purple and woodland compiled by the  
Geological Survey from aerial photographs taken 1978 and  
other sources. This information not field checked  
Map edited 1982  
Purple tint indicates extension of urban areas



ROAD CLASSIFICATION  
Primary highway, all weather, hard surface  
Secondary highway, all weather, hard surface  
Light-duty road, all weather, improved surface  
Unimproved road, fair or dry weather  
Interstate Route  
U. S. Route  
State Route  
TEMPE, ARIZ.  
N3322.5—W1152.5/7.5  
1952  
PHOTOREVISED 1982  
DMA 3650 IV NW-SERIES V898