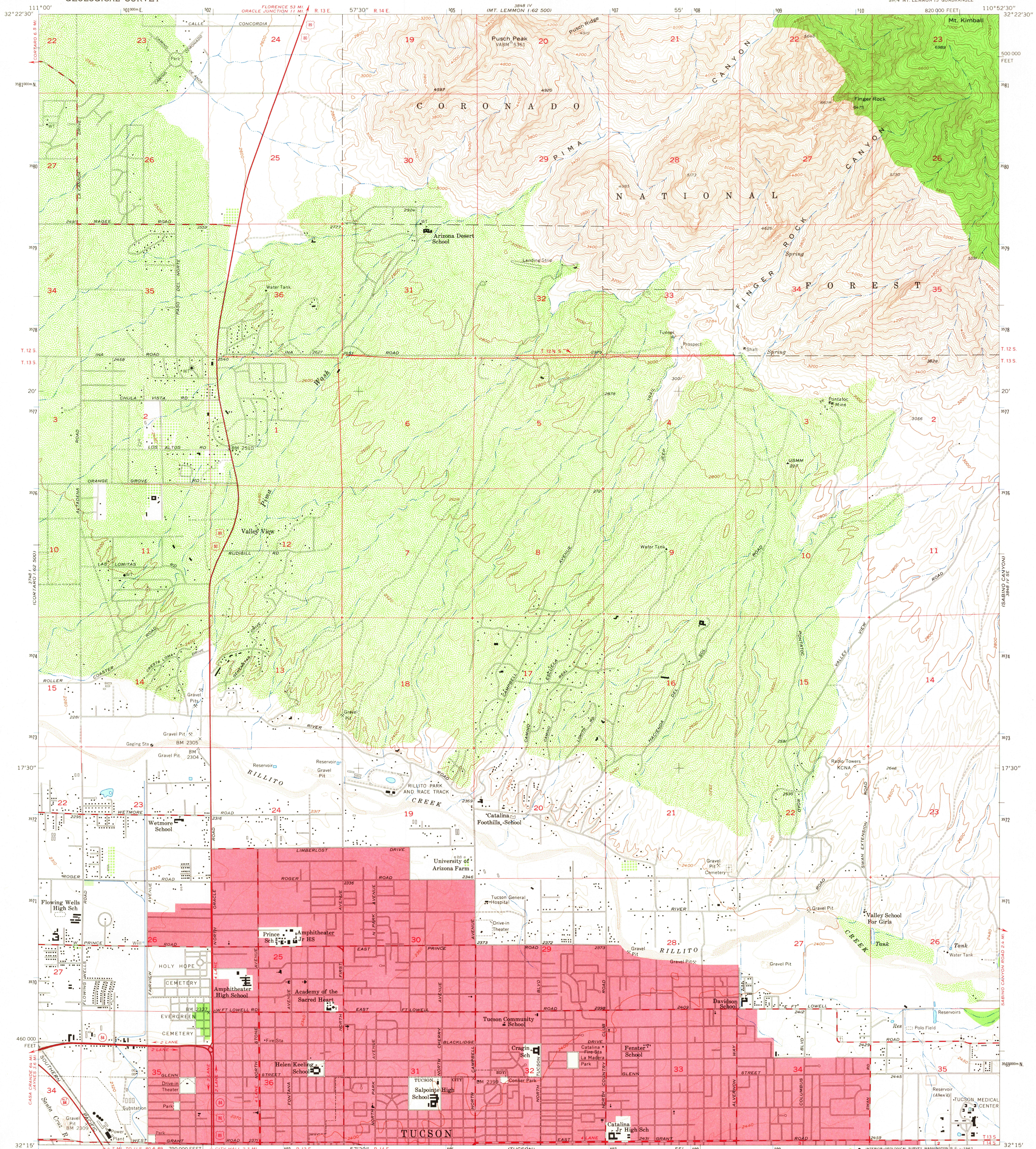
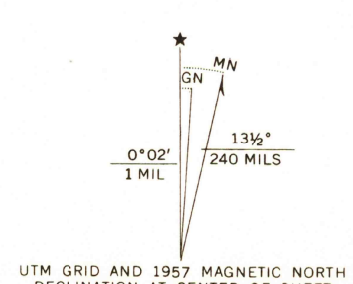


UNITED STATES  
DEPARTMENT OF THE INTERIOR  
GEOLOGICAL SURVEY

TUCSON NORTH QUADRANGLE  
ARIZONA-PIMA CO.  
7.5 MINUTE SERIES (TOPOGRAPHIC)  
SW/4 MT. LEMMON 15' QUADRANGLE



Mapped, edited, and published by the Geological Survey  
Control by USGS, USC&GS, and USCE  
Topography from aerial photographs by Kersh plotter  
and by planetable surveys 1957. Aerial photographs taken 1954  
Polyconic projection. 1927 North American datum  
10,000-foot grid based on Arizona coordinate system,  
central zone  
1000-meter Universal Transverse Mercator grid ticks,  
zone 12, shown in blue  
Red tint indicates areas in which only  
landmark buildings are shown  
Unchecked elevations are shown in brown



CONTOUR INTERVAL 40 FEET  
DASHED LINES REPRESENT 10-FOOT CONTOURS  
DATUM IS MEAN SEA LEVEL

THIS MAP COMPLIES WITH NATIONAL MAP ACCURACY STANDARDS  
FOR SALE BY U. S. GEOLOGICAL SURVEY, DENVER, COLORADO 80225 OR WASHINGTON, D. C. 20242  
A FOLDER DESCRIBING TOPOGRAPHIC MAPS AND SYMBOLS IS AVAILABLE ON REQUEST

USGS  
Historical File  
Topographic Division

ROAD CLASSIFICATION

Heavy-duty	Light-duty
Medium-duty	Unimproved dirt
U.S. Route	State Route

QUADRANGLE LOCATION

ARIZONA

U.S.G.S.  
TOPOGRAPHIC DIVISION

TUCSON NORTH, ARIZ.  
SW/4 MT. LEMMON 15' QUADRANGLE  
N3215-W11052.5/7.5

1957

AMS 3848 IV SW-SERIES Y898

4670