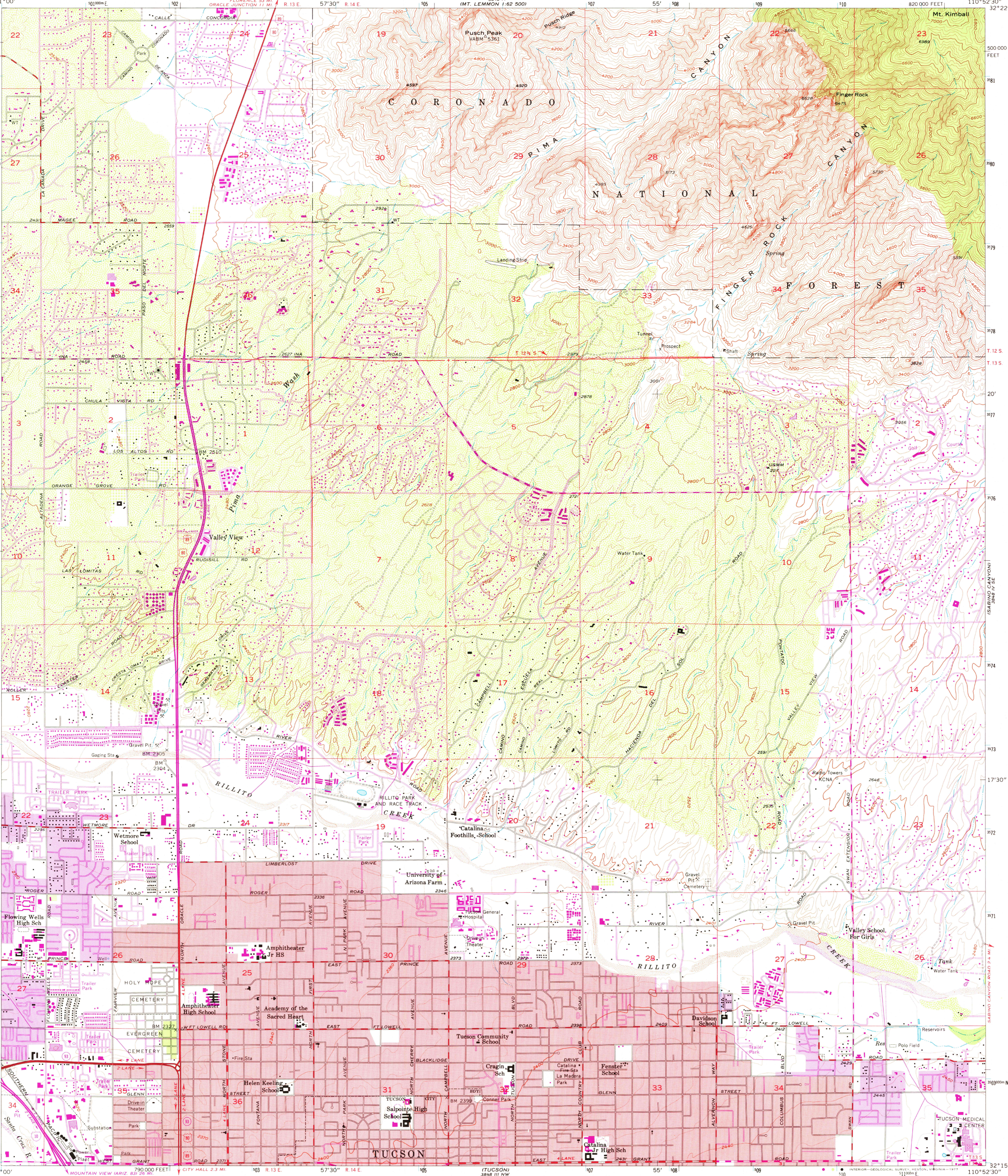
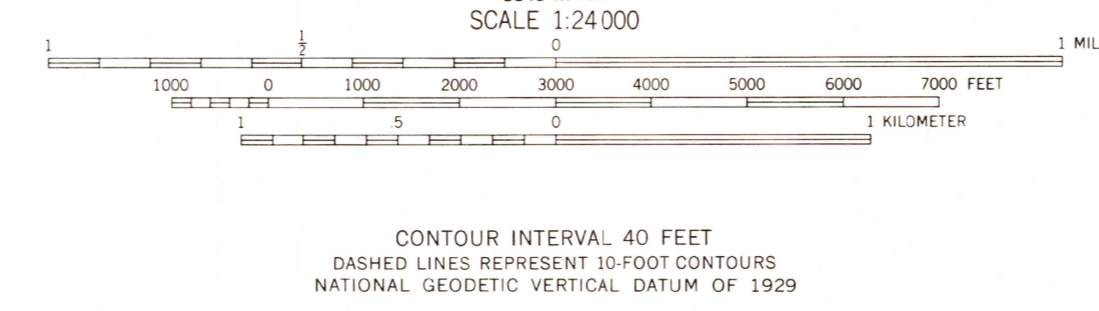
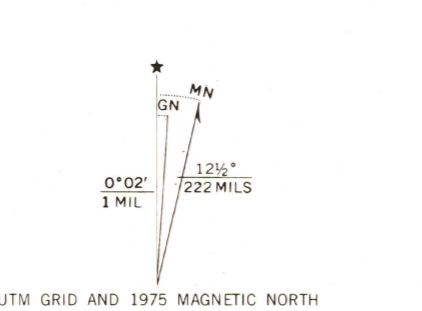


UNITED STATES
DEPARTMENT OF THE INTERIOR
GEOLOGICAL SURVEY

TUCSON NORTH QUADRANGLE
ARIZONA-PIMA CO.
7.5 MINUTE SERIES (TOPOGRAPHIC)
SW 4 MT. LEMMON 15' QUADRANGLE



Mapped, edited, and published by the Geological Survey
Control by USGS, USC&GS, and USCE
Topography from aerial photographs by Kelsh plotter
and by planetable surveys 1957. Aerial photographs taken 1954
Polyconic projection. 1927 North American datum
10,000-foot grid based on Arizona coordinate system,
central zone
1000-meter Universal Transverse Mercator grid ticks,
zone 12, shown in blue
Red tint indicates areas in which only
landmark buildings are shown
Revisions shown in purple compiled from aerial photographs
taken 1971 and 1975. This information not field checked
Purple tint indicates extension of urban areas



ROAD CLASSIFICATION
Heavy-duty ——— Light-duty ———
Medium-duty ——— Unimproved dirt ———
U.S. Route ——— State Route ———
Interstate Route ———
TUCSON NORTH, ARIZ.
SW 4 MT. LEMMON 15' QUADRANGLE
N3215—W11052.5/7.5
1957
PHOTOREVISED 1971 AND 1975
AMS 3848 IV SW—SERIES V898

FEB 18 1978
6450