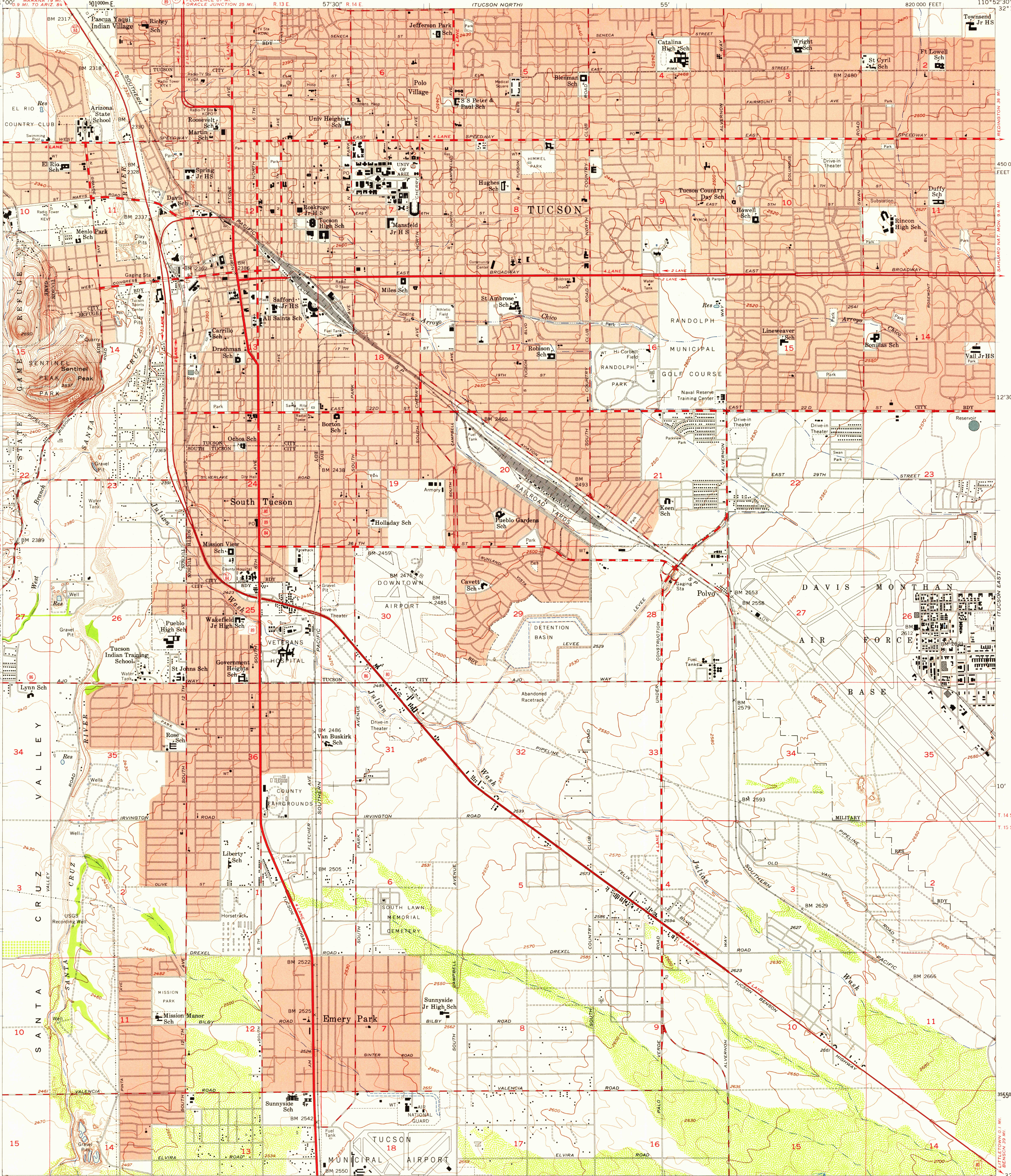
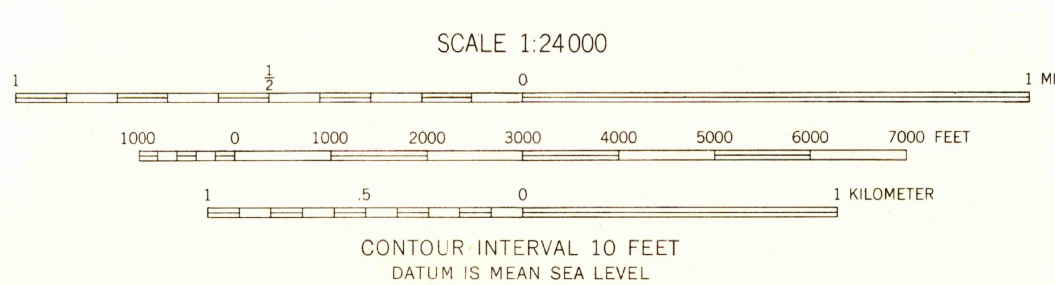


UNITED STATES
DEPARTMENT OF THE INTERIOR
GEOLOGICAL SURVEY

TUCSON QUADRANGLE
ARIZONA-PIMA CO.
7.5 MINUTE SERIES (TOPOGRAPHIC)
NW/4 TUCSON 15' QUADRANGLE



Mapped, edited, and published by the Geological Survey
Control by USGS and USC&GS
Topography from aerial photographs by photogrammetric methods
by USAF and USGS. Aerial photographs taken 1954. Field check 1957
Polyconic projection. 1927 North American datum
10,000-foot grid based on Arizona coordinate system,
central zone
1000-meter Universal Transverse Mercator grid ticks,
zone 12, shown in blue
Red tint indicates areas in which only
landmark buildings are shown
Unchecked elevations are shown in brown



USGS
Historical File
Topographic Division
ROAD CLASSIFICATION
Heavy-duty ——— Light-duty ———
Medium-duty ——— Unimproved dirt ———
U.S. Route ——— State Route ———
TUCSON, ARIZ.
NW/4 TUCSON 15' QUADRANGLE
N3207.5-W11052.5/7.5
1957

SEP - 5 1958
4350