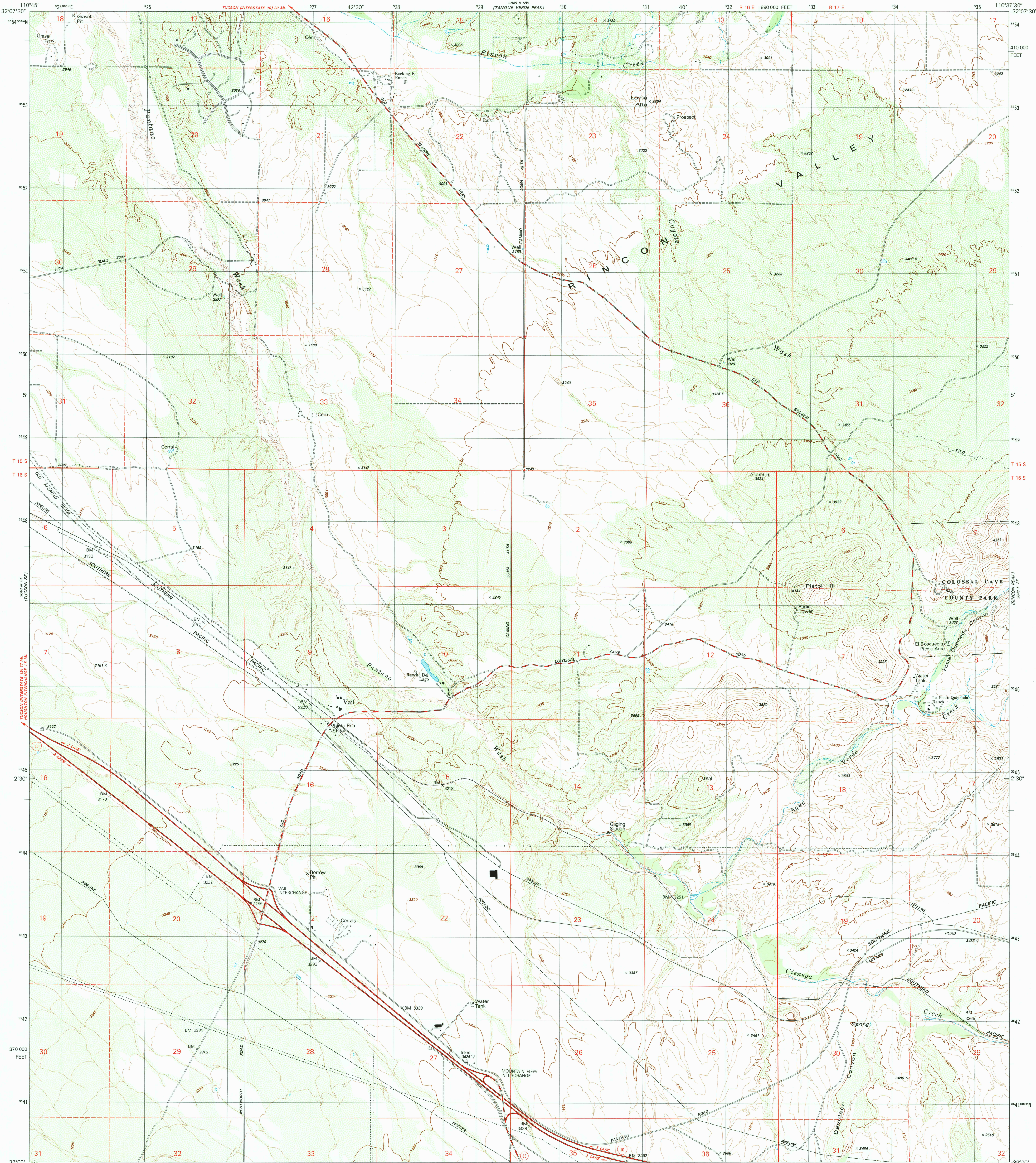
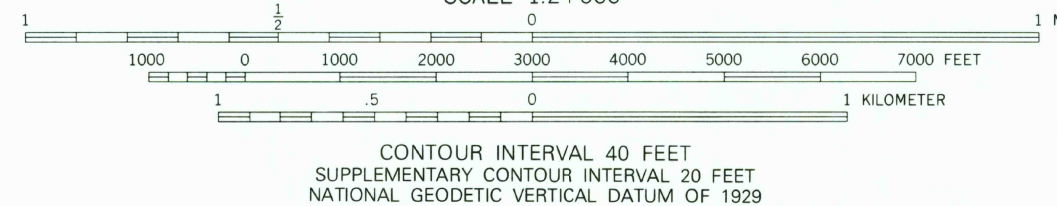
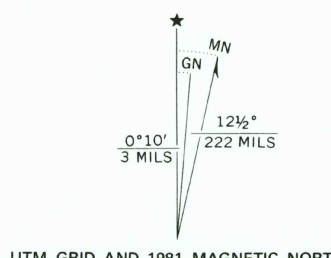


UNITED STATES  
DEPARTMENT OF THE INTERIOR  
GEOLOGICAL SURVEY

VAIL QUADRANGLE  
ARIZONA-PIMA CO.  
7.5 MINUTE SERIES (TOPOGRAPHIC)  
SW/4 RINCON VALLEY 15' QUADRANGLE



Mapped, edited, and published by the Geological Survey  
Control by USGS and NOS/NOAA  
Topography by photogrammetric methods from aerial  
photographs taken 1975. Field checked 1976  
Map edited 1981  
Projection and 10,000-foot grid ticks: Arizona coordinate  
system, central zone (transverse Mercator)  
1000-meter Universal Transverse Mercator grid, zone 12  
1927 North American Datum  
To place on the predicted North American Datum 1983  
move the projection lines 7 meters south and  
61 meters east as shown by dashed corner ticks  
Fine red dashed lines indicate selected fence and field lines where  
generally visible on aerial photographs. This information is unchecked



THIS MAP COMPLIES WITH NATIONAL MAP ACCURACY STANDARDS  
FOR SALE BY U. S. GEOLOGICAL SURVEY, DENVER, COLORADO 80225, OR RESTON, VIRGINIA 22092  
A FOLDER DESCRIBING TOPOGRAPHIC MAPS AND SYMBOLS IS AVAILABLE ON REQUEST



ROAD CLASSIFICATION  
Primary highway, hard surface  
Secondary highway, hard surface  
Interstate Route  
U. S. Route  
State Route  
Light-duty road, hard or improved surface  
Unimproved road  
VAIL, ARIZ.  
SW/4 RINCON VALLEY 15' QUADRANGLE  
N3200-W11037.5/7.5  
1981  
DMA 3848 II SW-SERIES V898

