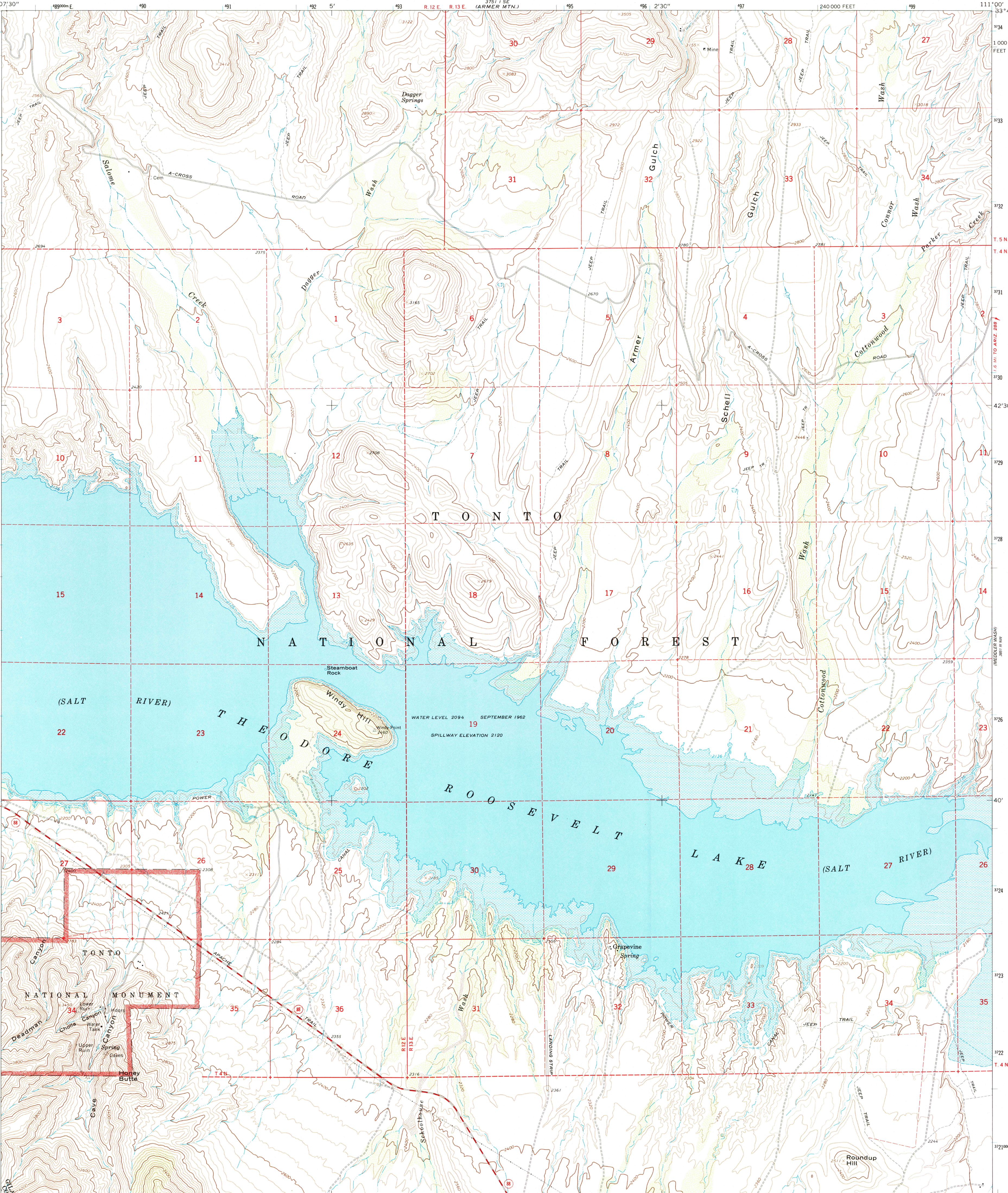
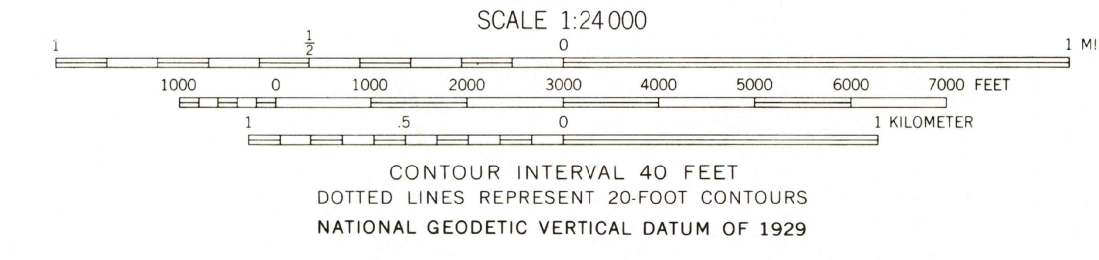
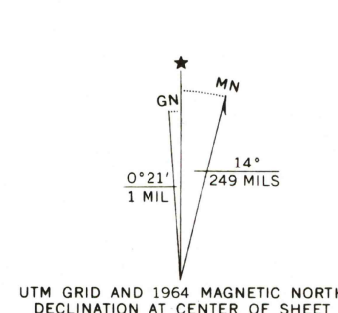


UNITED STATES  
DEPARTMENT OF THE INTERIOR  
GEOLOGICAL SURVEY

WINDY HILL QUADRANGLE  
ARIZONA  
7.5 MINUTE SERIES (TOPOGRAPHIC)



Mapped, edited, and published by the Geological Survey  
Control by USGS and USC&GS  
Topography by photogrammetric methods from aerial photographs taken 1962. Field checked 1964  
Polyconic projection, 1927 North American datum  
10,000-foot grid based on Arizona coordinate system, east zone  
1000-meter Universal Transverse Mercator grid ticks, zone 12, shown in blue  
To place on the predicted North American Datum 1983 move the projection lines 2 meters south and 63 meters east as shown by dashed corner ticks  
Area covered by dashed light-blue pattern is subject to controlled inundation  
Where omitted, land lines have not been established  
Fine dashed lines indicate selected fence lines  
There may be private inholdings within the boundaries of the National or State reservations shown on this map



THIS MAP COMPLIES WITH NATIONAL MAP ACCURACY STANDARDS  
FOR SALE BY U. S. GEOLOGICAL SURVEY, DENVER, COLORADO 80225, OR RESTON, VIRGINIA 22092  
A FOLDER DESCRIBING TOPOGRAPHIC MAPS AND SYMBOLS IS AVAILABLE ON REQUEST



WINDY HILL, ARIZ.  
33111-F1-TF-024  
1964  
PHOTOINSPECTED 1978  
DMA 3751 II NE-SERIES V988