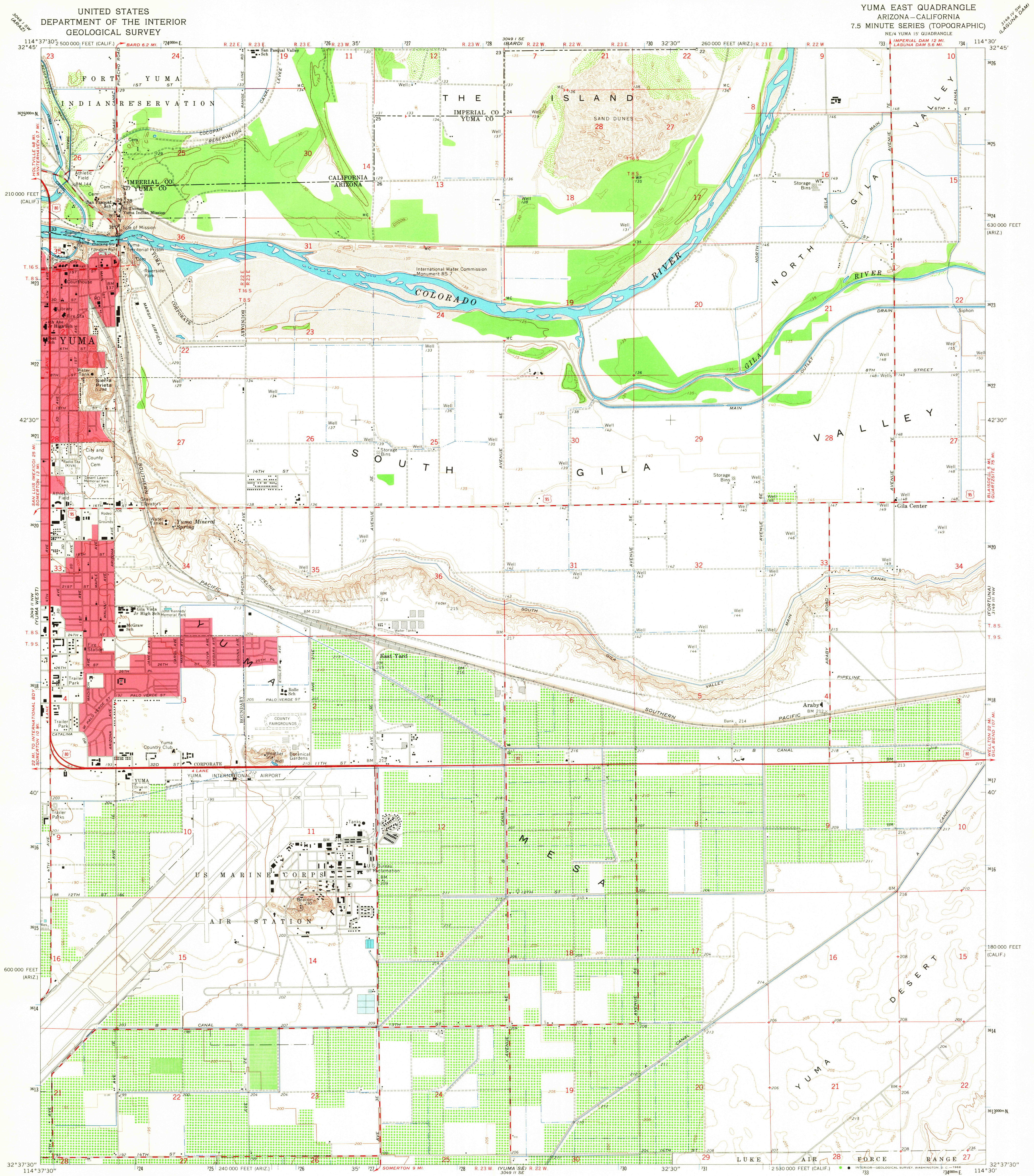


UNITED STATES
DEPARTMENT OF THE INTERIOR
GEOLOGICAL SURVEY

YUMA EAST QUADRANGLE
ARIZONA—CALIFORNIA
7.5 MINUTE SERIES (TOPOGRAPHIC)
NE/4 YUMA 15' QUADRANGLE



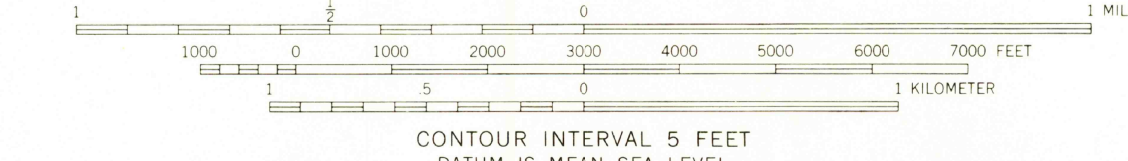
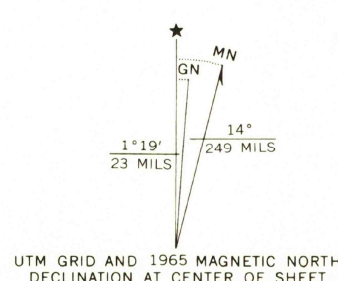
Maped, edited, and published by the Geological Survey
in cooperation with the State of California

Control by USGS and USC&GS

Planimetry by photogrammetric methods from aerial photographs
taken 1948. Topography by planimetric surveys 1952. Revised from
aerial photographs taken 1962 and by planimetric surveys 1965

Polyconic projection. 1927 North American datum
10,000-foot grids based on Arizona coordinate system, west zone,
and California coordinate system, zone 6
1,000-meter Universal Transverse Mercator grid ticks,
zone 11, shown in blue

Red tint indicates areas in which only landmark buildings are shown



CONTOUR INTERVAL 5 FEET
DATUM IS MEAN SEA LEVEL

THIS MAP COMPLIES WITH NATIONAL MAP ACCURACY STANDARDS
FOR SALE BY U.S. GEOLOGICAL SURVEY, DENVER, COLORADO 80225, OR WASHINGTON, D.C. 20242
A FOLDER DESCRIBING TOPOGRAPHIC MAPS AND SYMBOLS IS AVAILABLE ON REQUEST



U.S.G.S.
TOPOGRAPHIC DIVISION

ROAD CLASSIFICATION

Heavy-duty ——— Light-duty ———
Medium-duty ——— Unimproved dirt ———
U.S. Route

YUMA EAST, ARIZ.—CALIF.
NE/4 YUMA 15' QUADRANGLE
N3237.5—W11430/7.5

1965

AMS 3049 II NE—SERIES V898