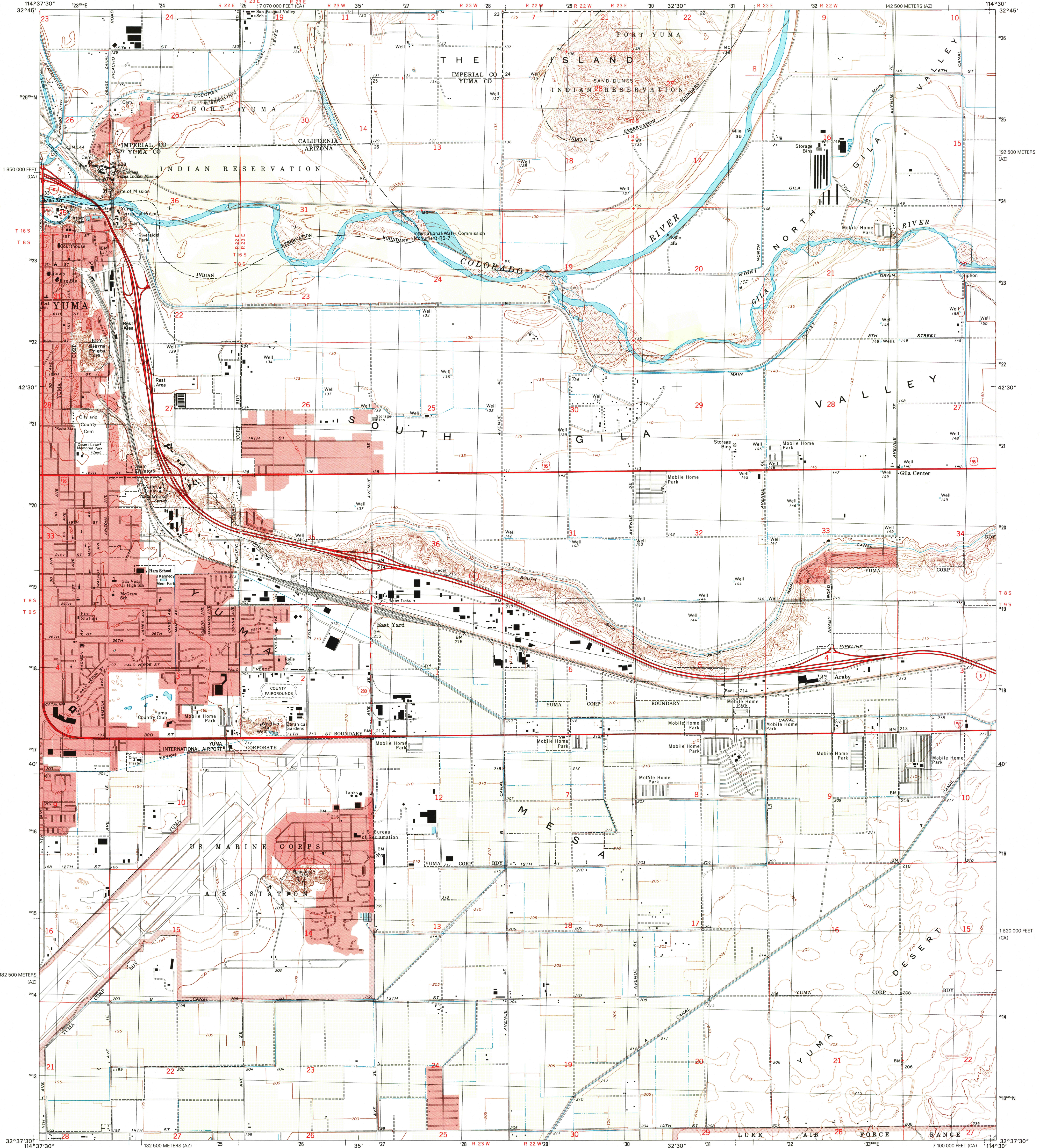
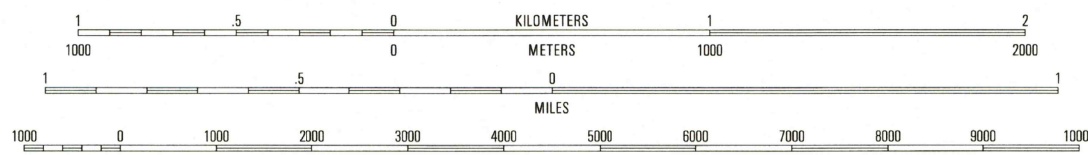
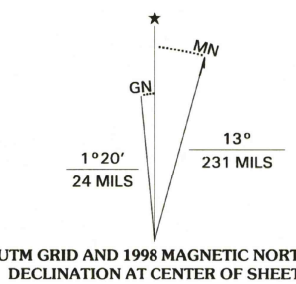


UNITED STATES
DEPARTMENT OF THE INTERIOR
GEOLOGICAL SURVEY

YUMA EAST QUADRANGLE
ARIZONA-CALIFORNIA
7.5-MINUTE SERIES (TOPOGRAPHIC)



Produced by the United States Geological Survey
Topography compiled 1965. Planimetry derived from imagery
taken 1994. Public Land Survey System and Survey control
current as of 1952.
North American Datum of 1983 (NAD 83). Projection and
1000-meter grid: Universal Transverse Mercator, zone 11
2500-meter ticks: Arizona Coordinate System of 1983 (west zone)
and 10 000-foot ticks: California Coordinate System of 1983
(zone 6)
North American Datum of 1927 (NAD 27) is shown by dashed
corner ticks. The values of the shift between NAD 83 and NAD 27
for 7.5-minute intersections are obtainable from National Geographic
Survey NADCON software
There may be private inholdings within the boundaries of
the National or State Reservation shown on this map
Landmark buildings verified 1965.
Contour gaps near map edges are due to NAD 83 shift



ROAD CLASSIFICATION

| | |
|---|--|
| Primary highway hard surface | Light-duty road, hard or improved surface |
| Secondary highway hard surface | Unimproved road |
| Interstate Route | U.S. Route |
| | State Route |

| | | | |
|---|---|---|--------------|
| 1 | 2 | 3 | 1 Arroyo |
| | | | 2 Bard |
| | | | 3 Laguna Dam |
| 4 | | 5 | 4 Yuma West |
| | | | 5 Fortuna |
| | | | 6 Sumner |
| 6 | 7 | 8 | 7 Yuma SE |
| | | | 8 Fortuna SW |

YUMA EAST, AZ-CA

1994

NIMA 3049 II NE-SERIES V898

THIS MAP COMPLIES WITH NATIONAL MAP ACCURACY STANDARDS
FOR SALE BY U.S. GEOLOGICAL SURVEY, P.O. BOX 25286, DENVER, COLORADO 80224
A FOLDER DESCRIBING TOPOGRAPHIC MAPS AND SYMBOLS IS AVAILABLE ON REQUEST

RECEIVED
MAR 31 1999
USGS NMD
HISTORICAL MAP ARCHIVES

