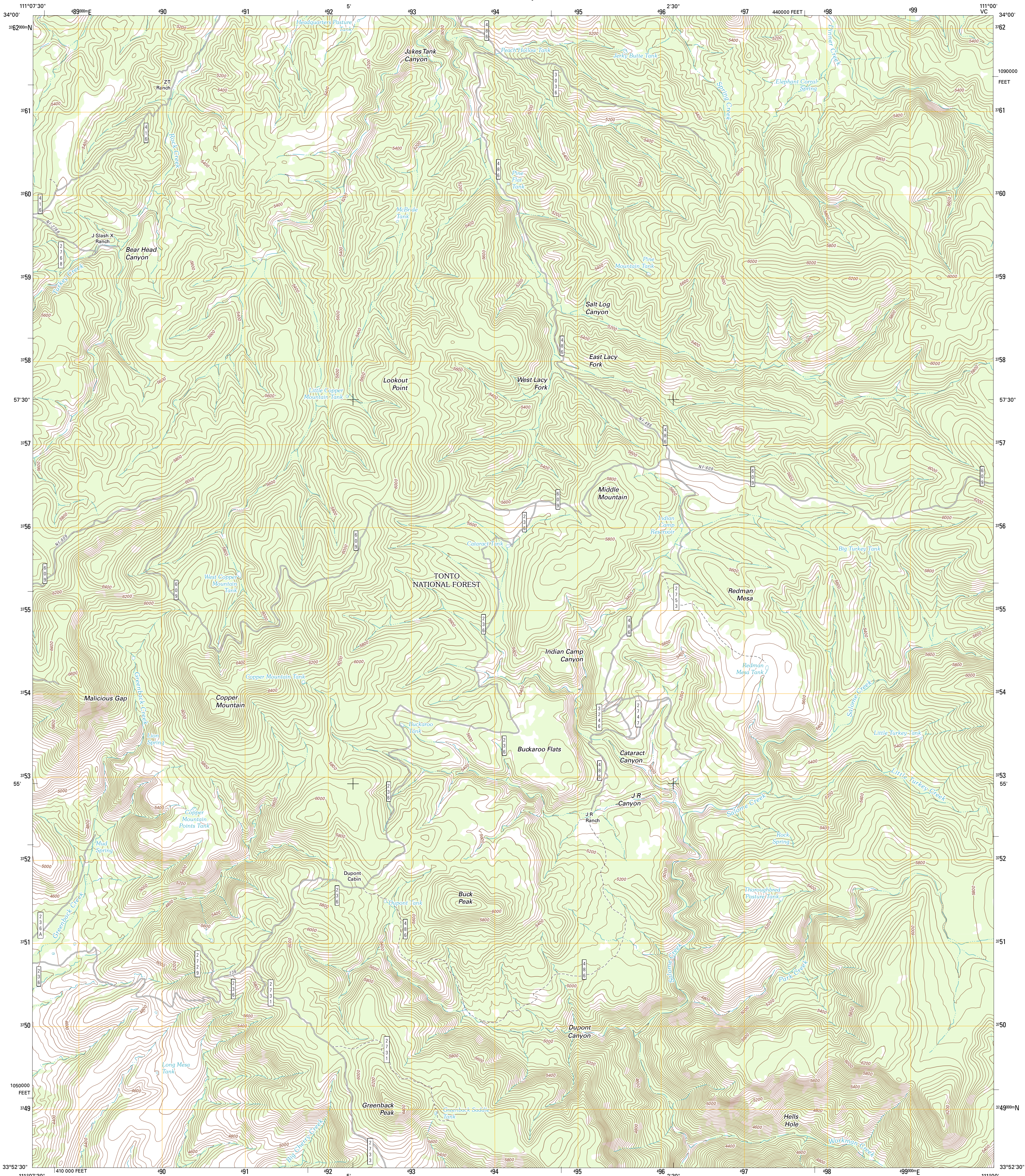




U.S. DEPARTMENT OF THE INTERIOR
U. S. GEOLOGICAL SURVEY

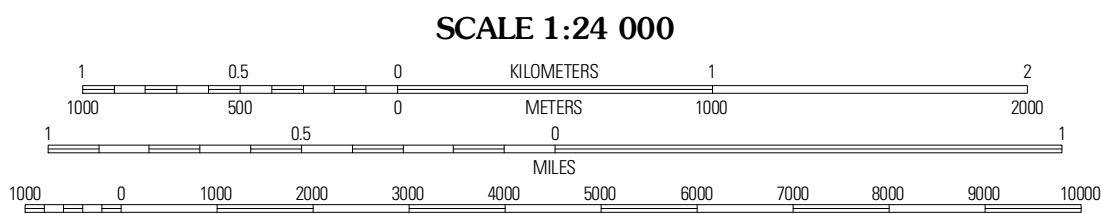
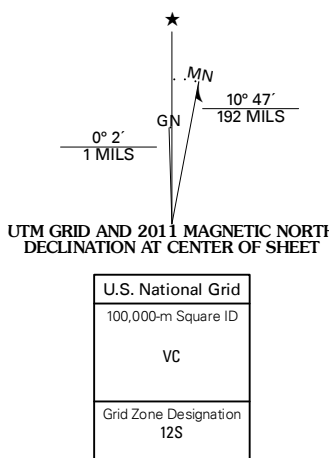


COPPER MOUNTAIN QUADRANGLE
ARIZONA-GILA CO.
7.5-MINUTE SERIES



Produced by the United States Geological Survey
North American Datum of 1983 (NAD83)
World Geodetic System of 1984 (WGS84), Projection and
1 000-meter grid: Universal Transverse Mercator, Zone 12S
10 000-foot ticks: Arizona Coordinate System of 1983 (east zone)

Imagery.....NAP, September 2010
Roads.....©2006-2011 TomTom
Roads within US Forest Service Lands.....ESTopo Data
with limited Forest Service updates, 2009
Names.....GNIS, 2011
Hydrography.....National Hydrography Dataset, 2007
Contours.....National Elevation Dataset, 2003
Boundaries.....Census, IBWC, IBC, USGS, 1972 - 2010



CONTOUR INTERVAL 40 FEET
NORTH AMERICAN VERTICAL DATUM OF 1988
This map was produced to conform with the
National Geospatial Program US Topo Product Standard, 2011.
A metadata file associated with this product is draft version 0.6.1



Sheep Basin Mountain	Buzzard Roost Mesa	Young
Picture Mountain	Copper Mountain	McFadden Peak
Greenback Creek	Arner Mountain	Arner Peak

ROAD CLASSIFICATION
Interstate Route US Route State Route Local Road 4WD
Ramp Interstate Route US Route FS Passenger Route FS High Clearance Route
Check with local Forest Service unit for current travel conditions and restrictions.

COPPER MOUNTAIN, AZ
2011

ADJOINING 7.5' QUADRANGLES