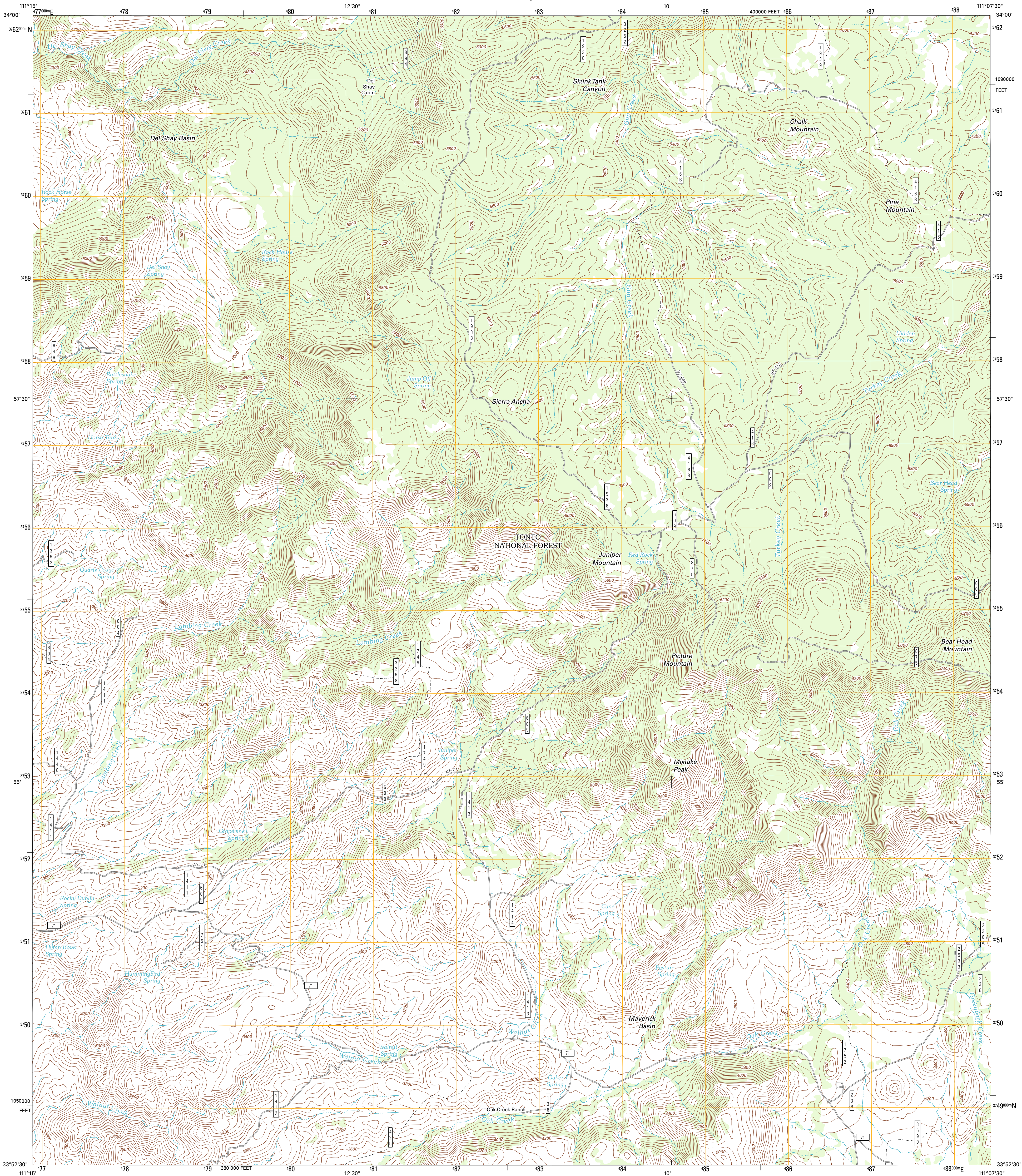




U.S. DEPARTMENT OF THE INTERIOR
U. S. GEOLOGICAL SURVEY



PICTURE MOUNTAIN QUADRANGLE
ARIZONA-GILA CO.
7.5-MINUTE SERIES

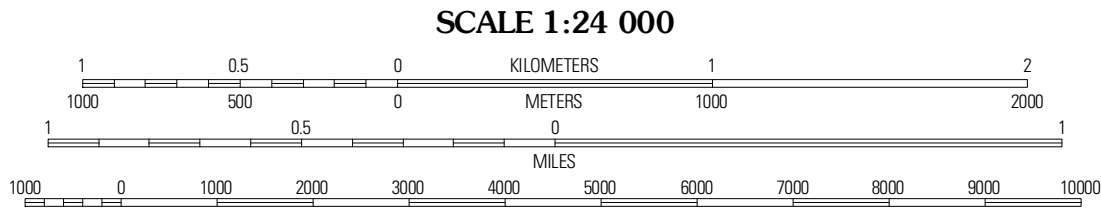


Produced by the United States Geological Survey
North American Datum of 1983 (NAD83)
World Geodetic System of 1984 (WGS84). Projection and
1 000-meter grid: Universal Transverse Mercator, Zone 12S
10 000-foot ticks: Arizona Coordinate System of 1983 (east
zone)

Imagery.....NAP, September 2010
Roads.....©2006-2011 TomTom
Roads within US Forest Service Lands.....ESTopo Data
with limited Forest Service updates, 2009
Names.....GNIS, 2011
Hydrography.....National Hydrography Dataset, 2007
Contours.....National Elevation Dataset, 2003
Boundaries.....Census, IBWC, IBC, USGS, 1972 - 2010

UTM GRID AND 2011 MAGNETIC NORTH
DECLINATION AT CENTER OF SHEET

U.S. National Grid
100,000-m Square ID
VC
Grid Zone Designation
12S



CONTOUR INTERVAL 40 FEET
NORTH AMERICAN VERTICAL DATUM OF 1988
This map was produced to conform with the
National Geospatial Program US Topo Product Standard, 2011.
A metadata file associated with this product is draft version 0.6.1



Gila	Sheep Basin Mountain	Buzzard Roost Mesa
Keyler Butte	Picture Mountain	Copper Mountain
Tonto Basin	Greenback Creek	Arner Mountain

ROAD CLASSIFICATION
Interstate Route
US Route
Ramp
Interstate Route
US Route
FS Primary Route
FS Passenger
Route
FS High Clearance
Route
State Route
Local Road
4WD
State Route
FS High Clearance
Route

Check with local Forest Service unit
for current travel conditions and restrictions.

PICTURE MOUNTAIN, AZ
2011

ADJOINING 7.5' QUADRANGLES