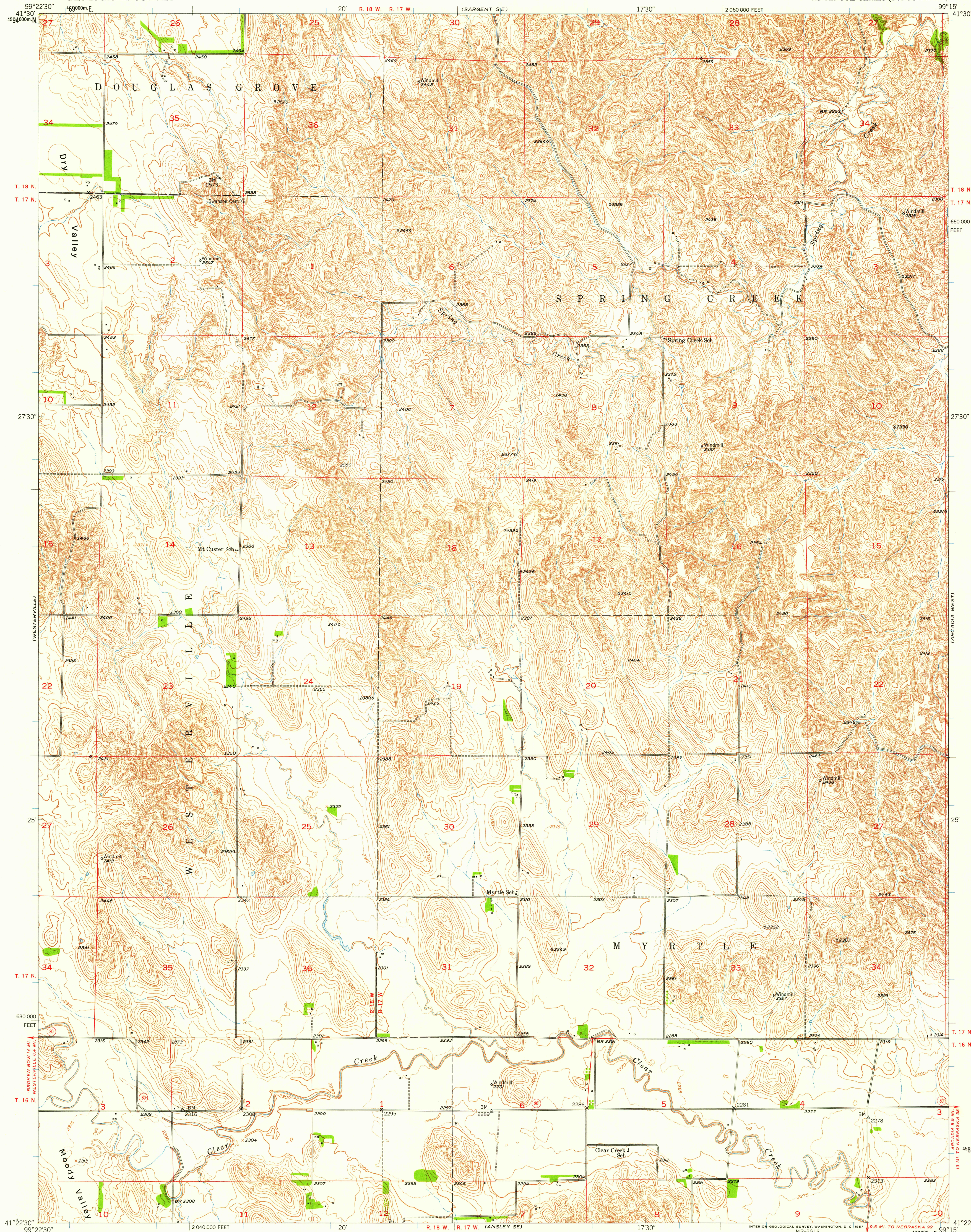


UNITED STATES  
DEPARTMENT OF THE INTERIOR  
GEOLOGICAL SURVEY

ANSLEY NE QUADRANGLE  
NEBRASKA-CUSTER CO.  
7.5 MINUTE SERIES (TOPOGRAPHIC)



Mapped, edited, and published by the Geological Survey as part of the Department of the Interior program for the development of the Missouri River Basin.

Control by USGS, USC&GS, and U. S. Bureau of Reclamation.

Topography by multiplex methods from aerial photographs taken 1949 and in part by U. S. Bureau of Reclamation. Field check 1951.

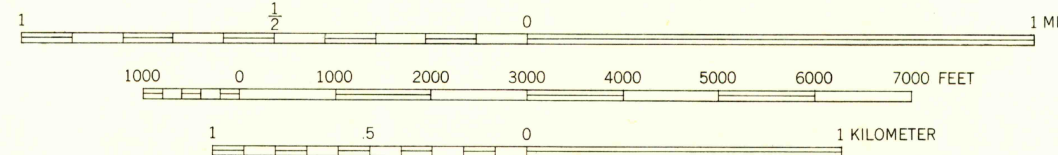
Polyconic projection. 1927 North American datum.

10,000-foot grid based on Nebraska coordinate system, south zone.

Unchecked elevations are shown in brown.

1000-meter Universal Transverse Mercator grid ticks, zone 14, shown in blue.

TRUE NORTH  
MAGNETIC NORTH  
APPROXIMATE MEAN DECLINATION, 1951



CONTOUR INTERVAL 10 FEET  
DOTTED LINES REPRESENT HALF-INTERVAL CONTOURS  
DATUM IS MEAN SEA LEVEL

THIS MAP COMPLIES WITH NATIONAL MAP ACCURACY STANDARDS  
FOR SALE BY U. S. GEOLOGICAL SURVEY, FEDERAL CENTER, DENVER, COLORADO OR WASHINGTON 25, D. C.  
A FOLDER DESCRIBING TOPOGRAPHIC MAPS AND SYMBOLS IS AVAILABLE ON REQUEST

ROAD CLASSIFICATION

Heavy-duty 4 LANE 6 LANE Light-duty 4 LANE 6 LANE

Medium-duty 4 LANE 6 LANE Unimproved dirt

U. S. Route State Route

U.S.G.S.  
FILE COPY  
TOPOGRAPHIC DIVISION

ANSLEY NE, NEBR.  
N4122.5-W9915/7.5  
1951

USGS  
Historical File  
Topographic Division

OCT 2 1957