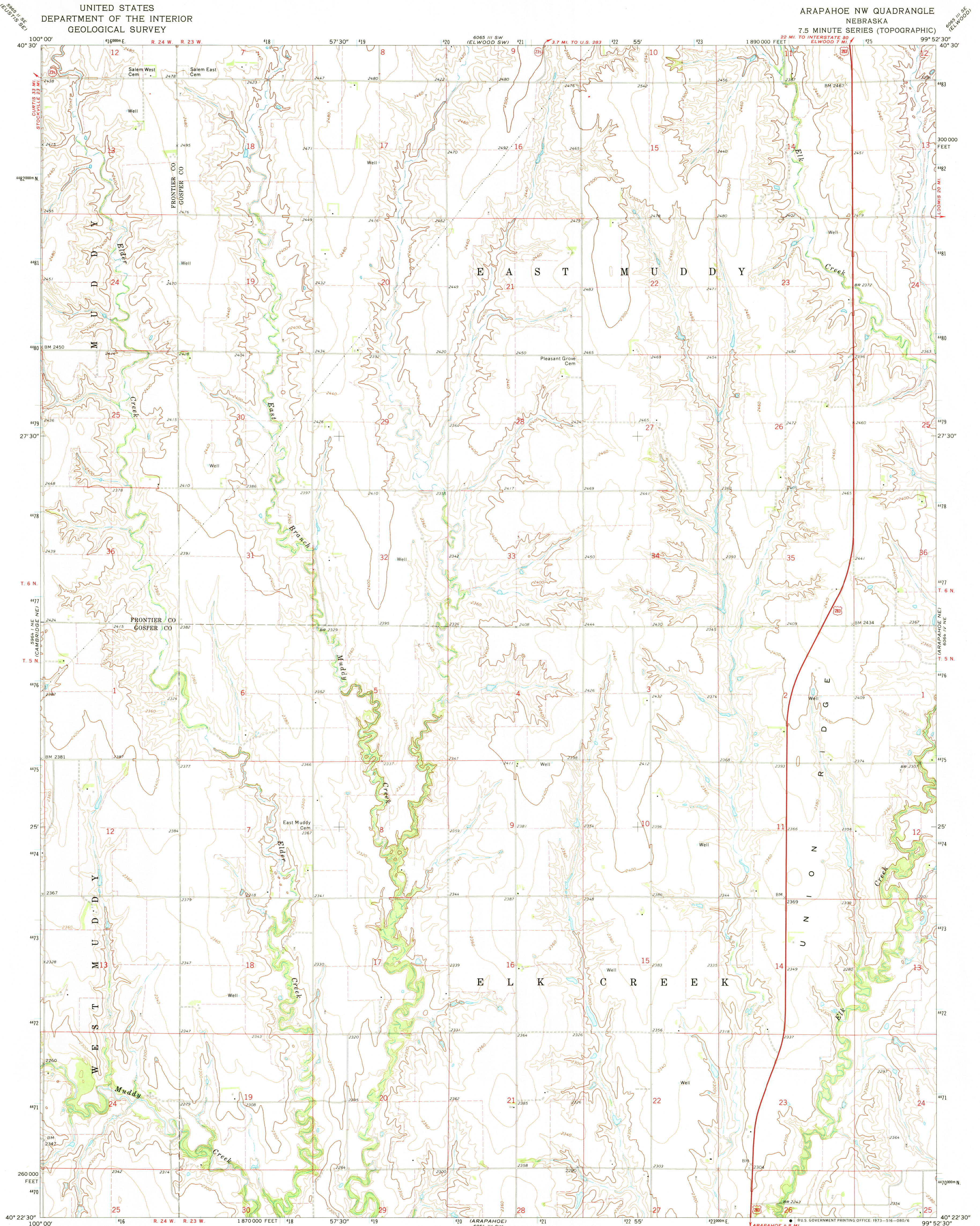


UNITED STATES
DEPARTMENT OF THE INTERIOR
GEOLOGICAL SURVEY

ARAPAHOE NW QUADRANGLE
NEBRASKA
7.5 MINUTE SERIES (TOPOGRAPHIC)



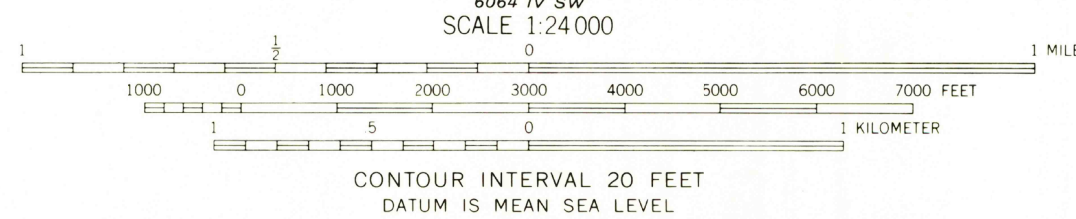
Mapped, edited, and published by the Geological Survey as part of the Department of the Interior program for the development of the Missouri River Basin.

Control by USGS and USC&GS

Topography by photogrammetric methods from aerial photographs taken 1968. Field checked 1971

Polyconic projection. 1927 North American datum 10,000-foot grid based on Nebraska coordinate system, south zone 1000-meter Universal Transverse Mercator grid ticks, zone 14, shown in blue

Fine red dashed lines indicate selected fence and field lines where generally visible on aerial photographs. This information is unchecked

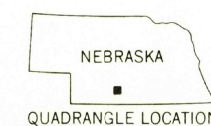


ROAD CLASSIFICATION

Primary highway, hard surface ——— Light duty road, hard or improved surface ———

Secondary highway, hard surface ——— Unimproved road ———

○ Interstate Route □ U. S. Route ○ State Route



ARAPAHOE NW, NEBR.
N4022.5-W9952.5/7.5

1971

AMS 6064 IV NW—SERIES V875