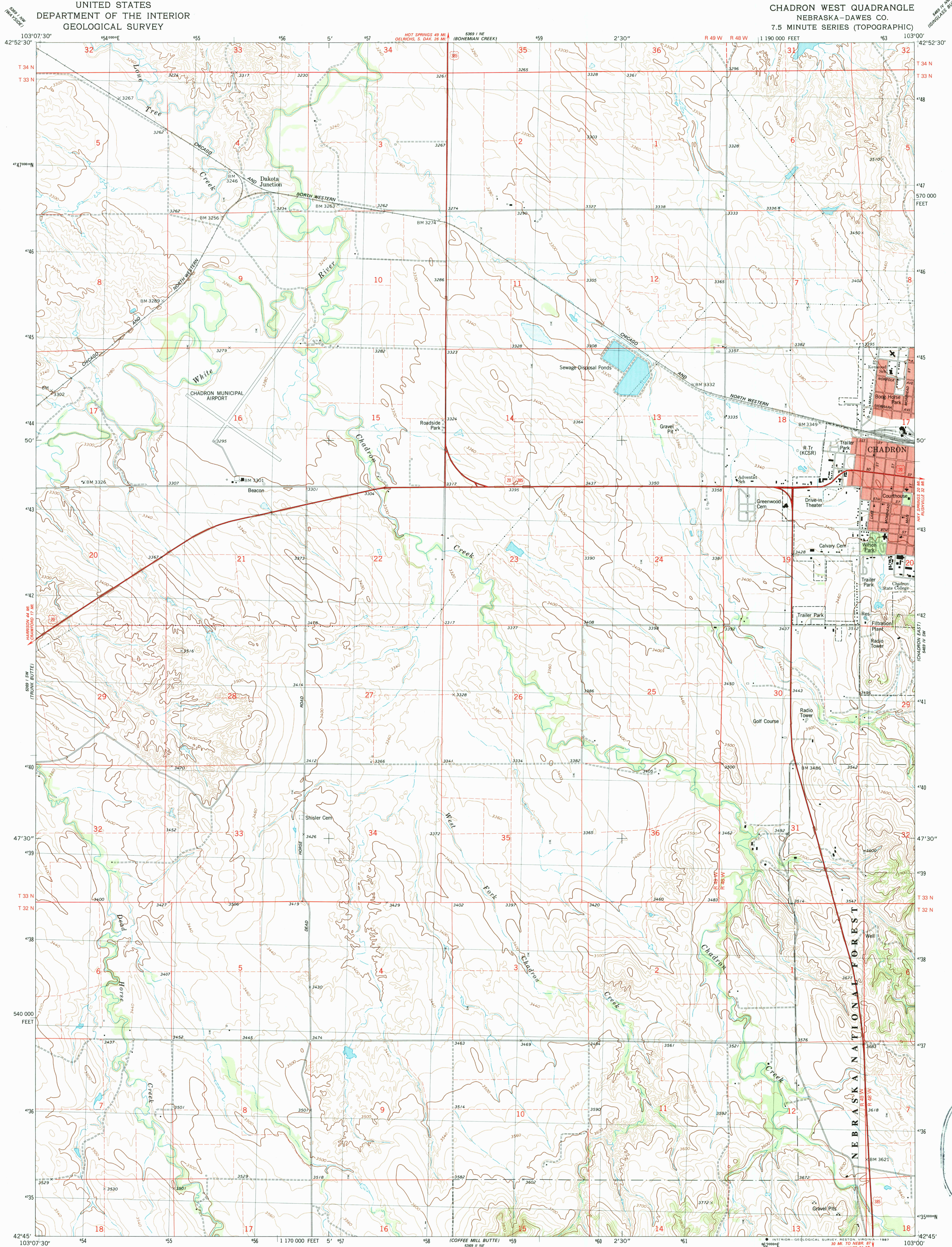


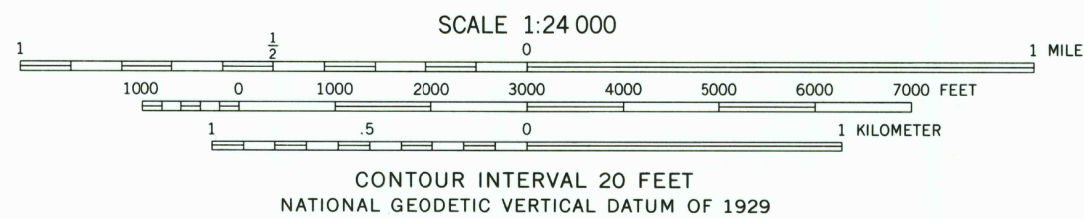
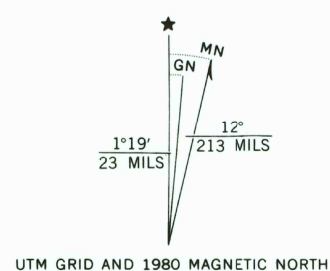
UNITED STATES
DEPARTMENT OF THE INTERIOR
GEOLOGICAL SURVEY

CHADRON WEST QUADRANGLE
NEBRASKA-DAWES CO.
7.5 MINUTE SERIES (TOPOGRAPHIC)



Mapped, edited, and published by the Geological Survey

Control by USGS and NOS/NOAA
Topography by photogrammetric methods from aerial photographs taken 1974. Field checked 1976. Map edited 1980
Projection and 10,000-foot grid ticks: Nebraska coordinate system, north zone (Lambert conformal conic)
1000-meter Universal Transverse Mercator grid, zone 13
1927 North American Datum
To place on the predicted North American Datum 1983 move the projection lines 6 meters north and 42 meters east as shown by dashed corner ticks
There may be private inholdings within the boundaries of the National or State reservations shown on this map
Red tint indicates areas in which only landmark buildings are shown
Fine red dashed lines indicate selected fence and field lines where generally visible on aerial photographs. This information is unchecked



ROAD CLASSIFICATION	
Primary highway, hard surface	Light-duty road, hard or improved surface
Secondary highway, hard surface	Unimproved road
Interstate Route	U. S. Route
	State Route

CHADRON WEST, NEBR.
42103-G1-TF-024

1980

DMA 5369 1 8E-SERIES V875

USGS NMND HISTORICAL MAP
SEP 14 1987
REC'D FILE COPY