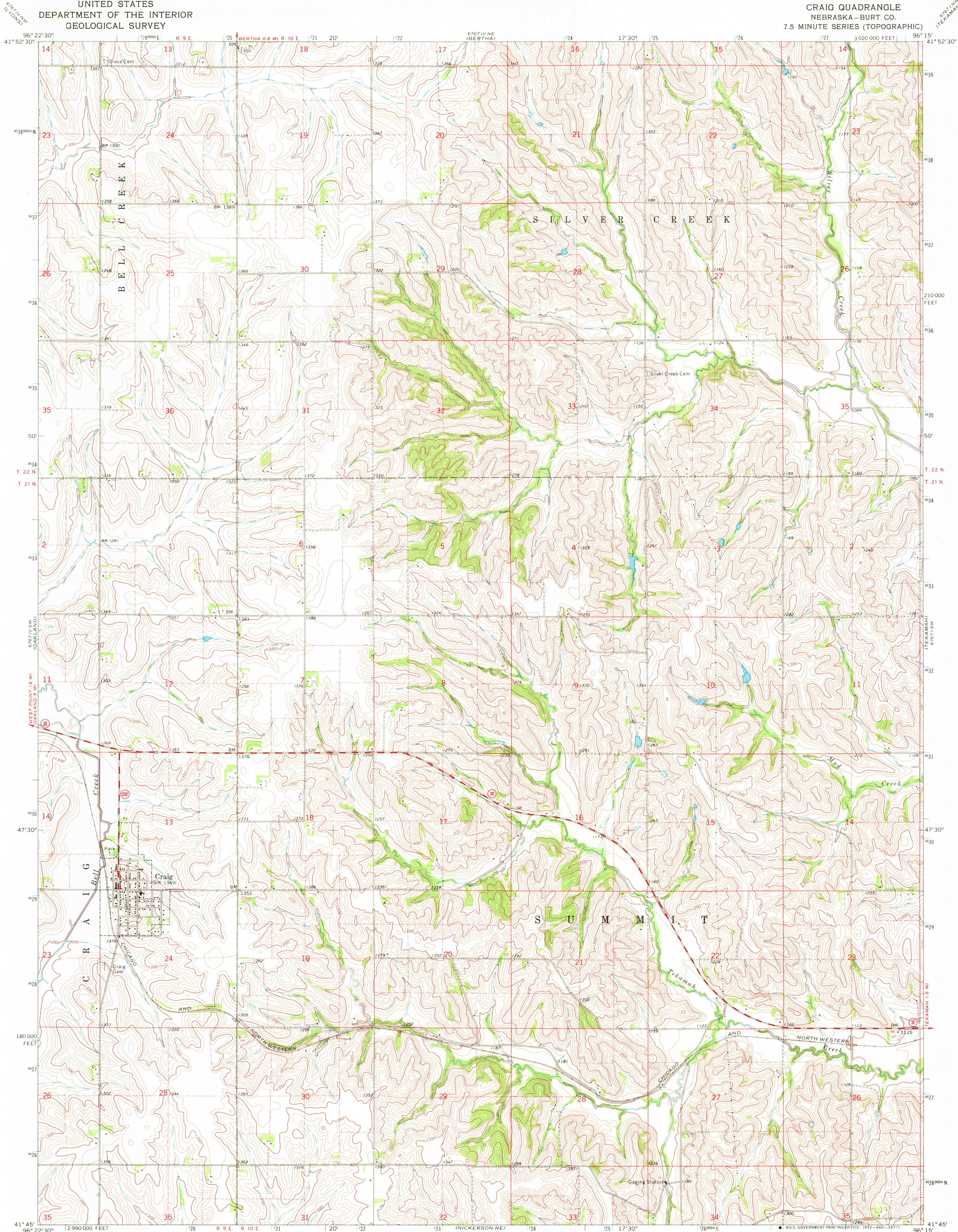


UNITED STATES  
DEPARTMENT OF THE INTERIOR  
GEOLOGICAL SURVEY

CRAIG QUADRANGLE  
NEBRASKA—BURT CO.  
7.5 MINUTE SERIES (TOPOGRAPHIC)



Mapped, edited, and published by the Geological Survey  
Control by USGS and USC&GS  
Topography by photogrammetric methods from aerial  
photographs taken 1965. Field checked 1970  
Polyconic projection. 1927 North American datum  
10,000-foot grid based on Nebraska coordinate system, north zone  
1000-meter Universal Transverse Mercator grid ticks,  
zone 14, shown in blue  
Fine red dashed lines indicate selected fence and field lines where  
generally visible on aerial photographs. This information is unchecked

UTM GRID AND 1970 MAGNETIC NORTH  
DECLINATION AT CENTER OF SHEET

SCALE 1:24,000  
CONTOUR INTERVAL 10 FEET  
DATUM IS MEAN SEA LEVEL



ROAD CLASSIFICATION  
Secondary highway, all weather. Light-duty road, all weather.  
harc surface improved surface  
Unimproved road, fair or dry  
weather  
State Route

CRAIG, NEBR.  
N4145—W9615/7.5

1970

AMS 6767 IV SE—SERIES V875

THIS MAP COMPLIES WITH NATIONAL MAP ACCURACY STANDARDS  
FOR SALE BY U. S. GEOLOGICAL SURVEY, DENVER, COLORADO 80225, OR WASHINGTON, D. C. 20242  
A FOLDER DESCRIBING TOPOGRAPHIC MAPS AND SYMBOLS IS AVAILABLE ON REQUEST

USGS  
HISTORICAL FILE  
TOPOGRAPHIC DIVISION

JUL 5 1972

Denver  
2000