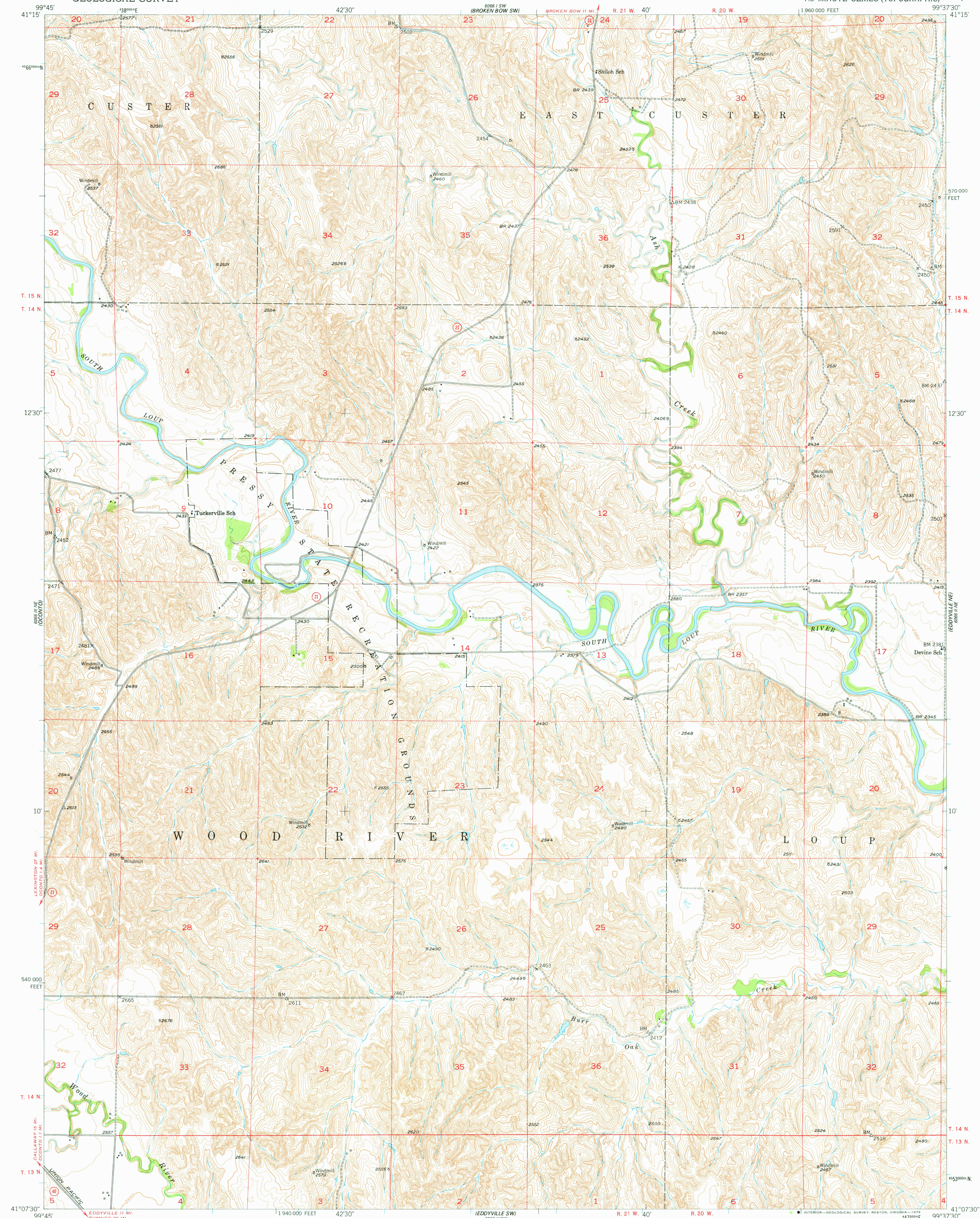
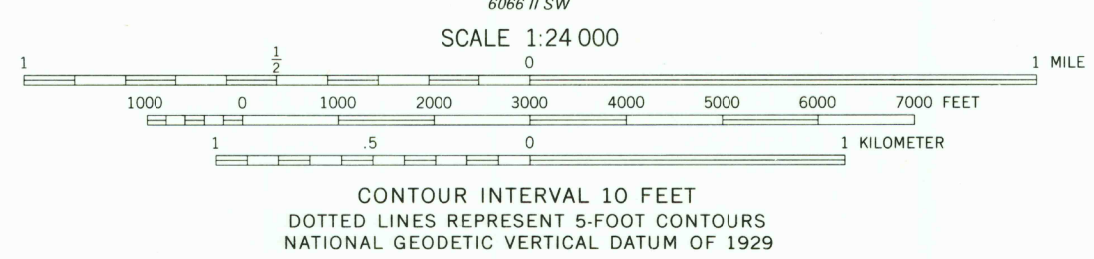
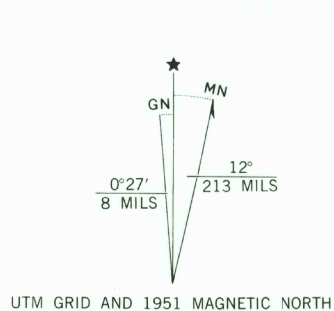


UNITED STATES
DEPARTMENT OF THE INTERIOR
GEOLOGICAL SURVEY

EDDYVILLE NW QUADRANGLE
NEBRASKA-CUSTER CO.
7.5 MINUTE SERIES (TOPOGRAPHIC)



Mapped, edited, and published by the Geological Survey
as part of the Department of the Interior program
for the development of the Missouri River Basin
Control by USGS and USC&GS
Topography from aerial photographs by multiplex methods
Aerial photographs taken 1949. Field check 1951
Polyconic projection. 1927 North American datum
10,000-foot grid based on Nebraska coordinate system,
south zone
1000-meter Universal Transversal Mercator grid ticks,
zone 14, shown in blue
Map photoinspected 1974
No major culture or drainage changes observed



ROAD CLASSIFICATION
Heavy-duty 4 LANE 16 LANE Light-duty
Medium-duty 4 LANE 16 LANE Unimproved dirt
U.S. Route State Route
USGS Historical File
Topographic Division
EDDYVILLE NW, NEBR.
N4107.5-W9937.5/7.5
1951
PHOTOINSPECTED 1974
AMS 6066 II NW-SERIES V875

AUG 18 1978

THIS MAP COMPLIES WITH NATIONAL MAP ACCURACY STANDARDS
FOR SALE BY U.S. GEOLOGICAL SURVEY, DENVER, COLORADO 80225, OR RESTON, VIRGINIA 22092
A FOLDER DESCRIBING TOPOGRAPHIC MAPS AND SYMBOLS IS AVAILABLE ON REQUEST