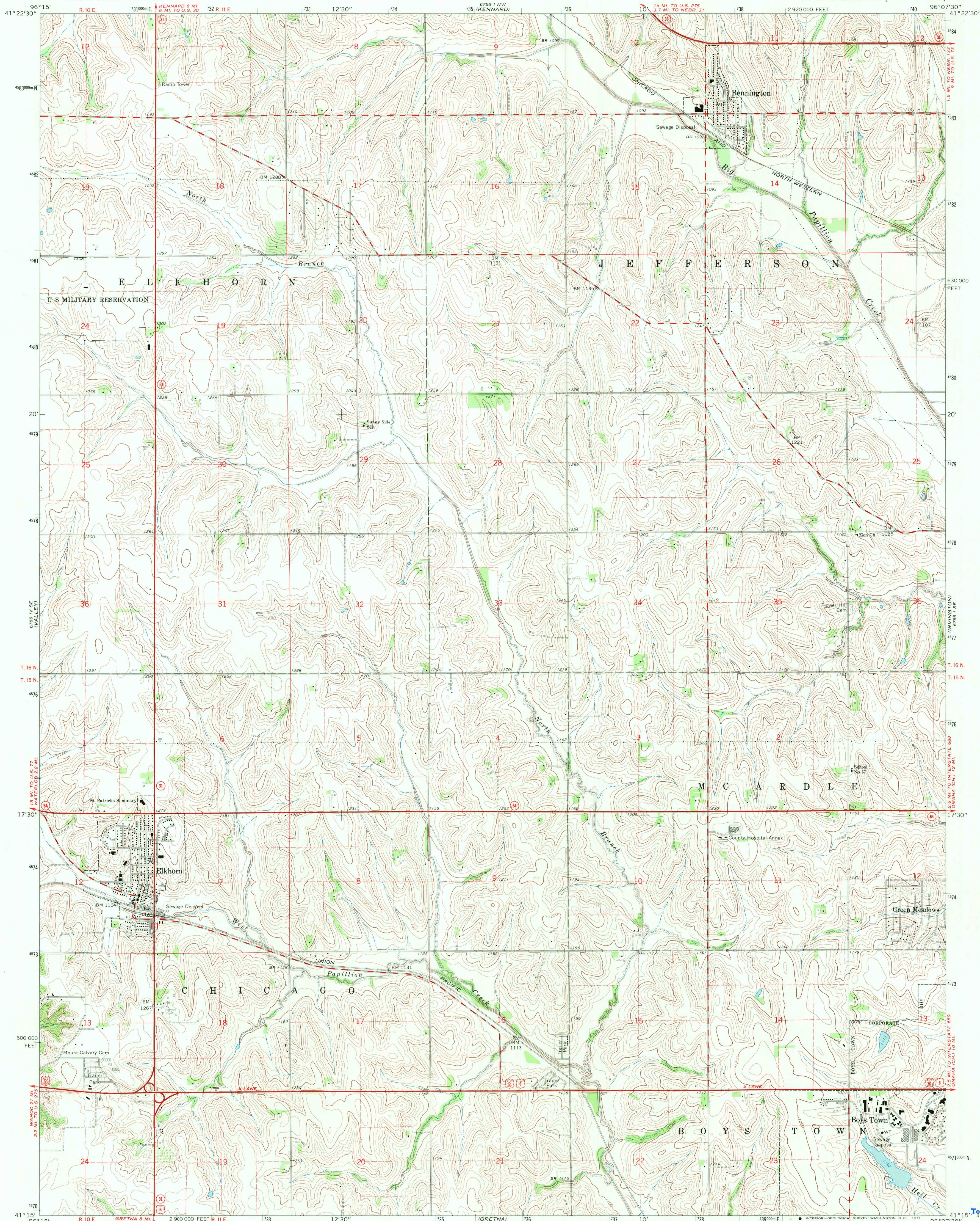
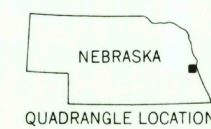
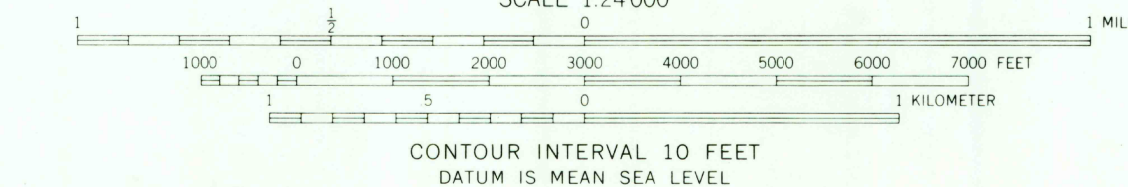
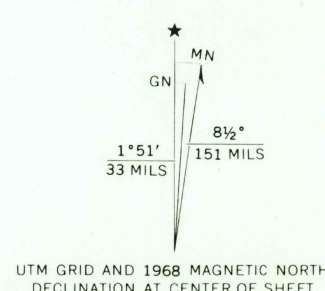


UNITED STATES
DEPARTMENT OF THE INTERIOR
GEOLOGICAL SURVEY

ELKHORN QUADRANGLE
NEBRASKA—DOUGLAS CO.
7.5 MINUTE SERIES (TOPOGRAPHIC)



Mapped, edited, and published by the Geological Survey as part of the Department of the Interior program for the development of the Missouri River Basin. Control by USGS and USC&GS. Topography by photogrammetric methods from aerial photographs taken 1966. Field checked 1968. Polyconic projection. 1927 North American datum. 10,000-foot grid based on Nebraska coordinate system, south zone 1000-meter Universal Transverse Mercator grid ticks, zone 14, shown in blue. Fine red dashed lines indicate selected fence and field lines where generally visible on aerial photographs. This information is unchecked.



ROAD CLASSIFICATION
Primary highway, all weather, hard surface
Secondary highway, all weather, hard surface
Light-duty road, all weather, improved surface
Unimproved road, fair or dry weather
U.S. Route
State Route

ELKHORN, NEBR.
N4115—W9607.5/7.5

1968
AMS 6766 I SW—SERIES V875

USGS
Historical File
Topographic Division

U.S.G.S.
TOPOGRAPHIC DIVISION
2875

MAR 4 1971