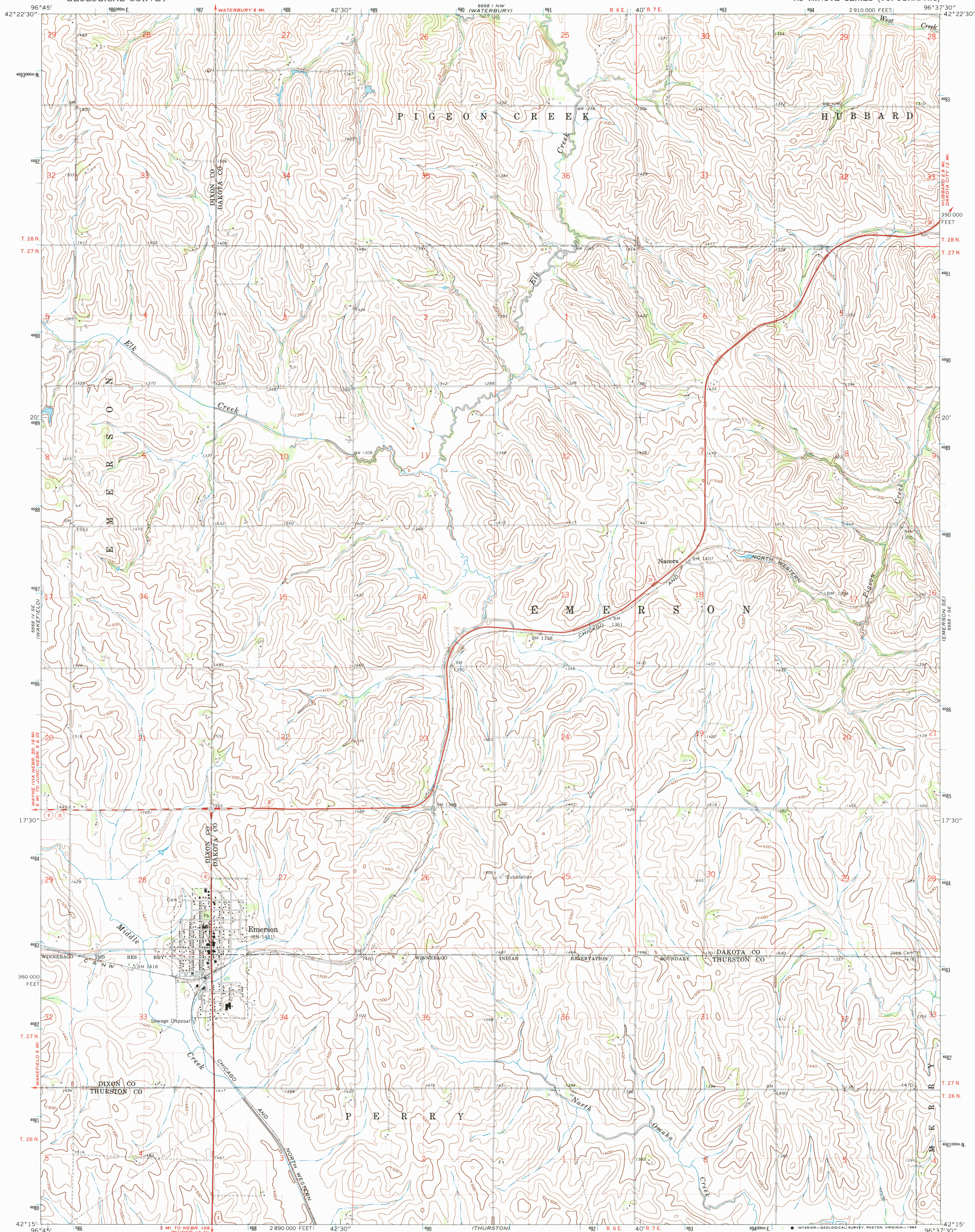


UNITED STATES
DEPARTMENT OF THE INTERIOR
GEOLOGICAL SURVEY

EMERSON QUADRANGLE
NEBRASKA
7.5 MINUTE SERIES (TOPOGRAPHIC)



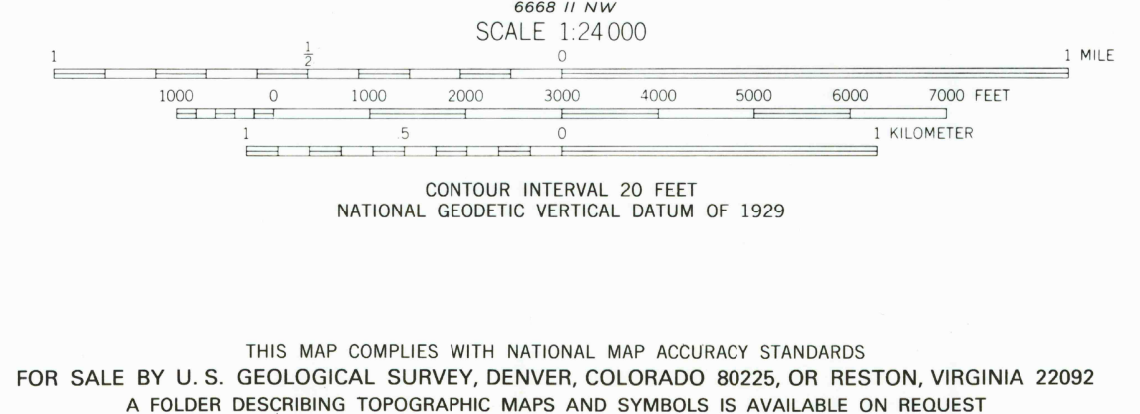
Mapped, edited, and published by the Geological Survey as part of the Department of the Interior program for the development of the Missouri River Basin Control by USGS and USC&GS

Topography by photogrammetric methods from aerial photographs taken 1966. Field checked 1967

Polyconic projection. 1927 North American datum 10,000-foot grid based on Nebraska coordinate system, north zone 1000-meter Universal Transverse Mercator grid ticks, zone 14, shown in blue

To place on the predicted North American Datum 1983, move the projection lines 5 meters north and 26 meters east as shown by dashed corner ticks

Fine red dashed lines indicate selected fence and field lines where generally visible on aerial photographs. This information is unchecked



ROAD CLASSIFICATION

Heavy-duty	Light-duty
Medium-duty	Unimproved dirt
State Route	

EMERSON, NEBR.
N4215—W9637.5/7.5
1967
AMS 6668 I SW—SERIES W875

RETURN TO:
USGS AND HISTORICAL MAP ARCHIVES