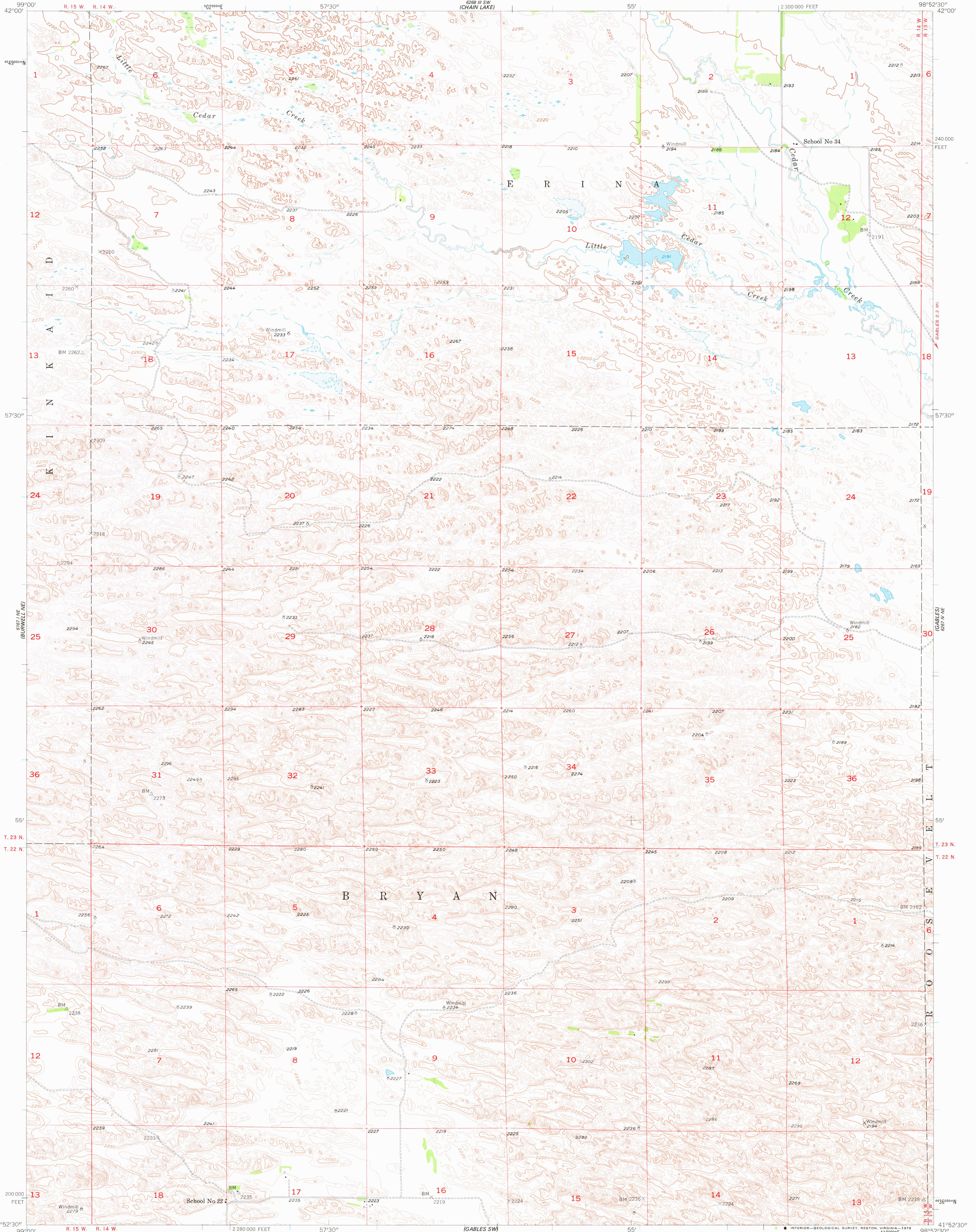
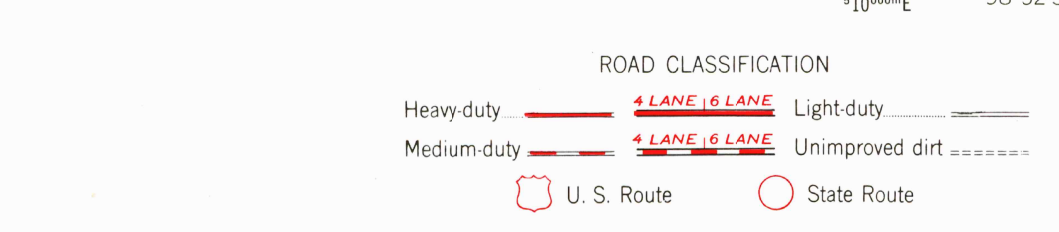
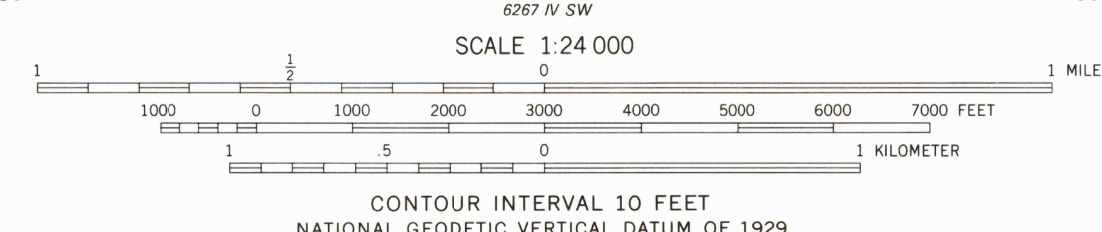
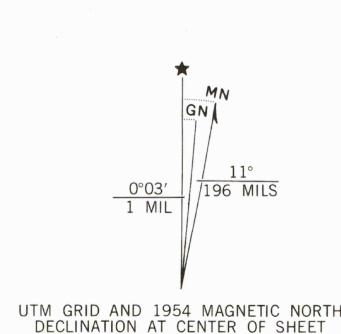


UNITED STATES  
DEPARTMENT OF THE INTERIOR  
GEOLOGICAL SURVEY

GABLES NW QUADRANGLE  
NEBRASKA—GARFIELD CO.  
7.5 MINUTE SERIES (TOPOGRAPHIC)



Mapped, edited, and published by the Geological Survey as part of the Department of the Interior program for the development of the Missouri River Basin. Aerial photographs taken 1951. Field check 1954. Control by USGS and USC&GS. Topography from aerial photographs by photogrammetric methods. Polyconic projection. 1927 North American datum. 10,000-foot grid based on Nebraska coordinate system, north zone. 1000-meter Universal Transverse Mercator grid ticks, zone 14, shown in blue. Map photos inspected 1974. No major culture or drainage changes observed.



USGS  
Historical File  
Topographic Division

GABLES NW, NEBR.  
N4152.5—W9852.5/7.5

1954  
PHOTOINSPECTED 1974  
AMS 6267 IV NW—SERIES V875

1300  
JAN 09 1978