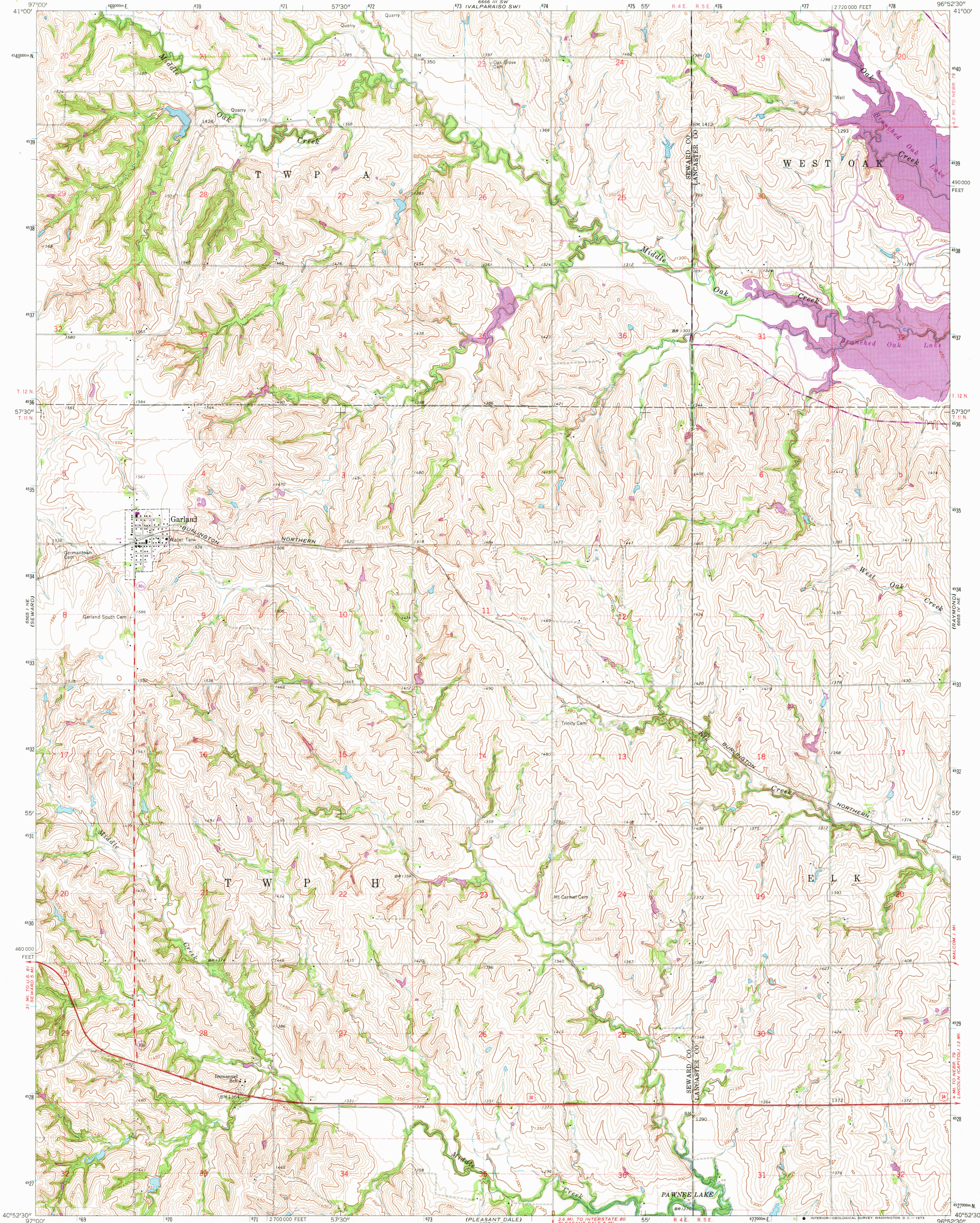


UNITED STATES  
DEPARTMENT OF THE INTERIOR  
GEOLOGICAL SURVEY

GARLAND QUADRANGLE  
NEBRASKA  
7.5 MINUTE SERIES (TOPOGRAPHIC)



Mapped, edited, and published by the Geological Survey

Control by USGS and USC&GS

Topography by photogrammetric methods from aerial

photographs taken 1961. Field checked 1964

Polyconic projection. 1927 North American datum

10,000-foot grid based on Nebraska coordinate system, south zone

1000-meter Universal Transverse Mercator grid ticks,

zone 14, shown in blue

Areas covered by dashed light-blue pattern

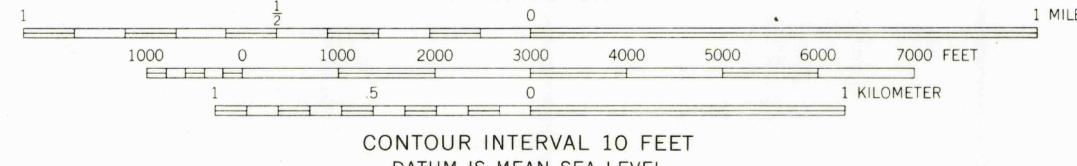
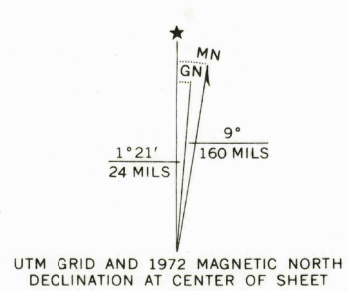
are subject to controlled inundation

Fine red dashed lines indicate selected fence and field lines where

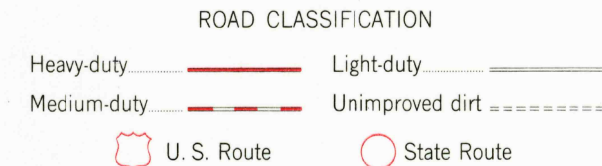
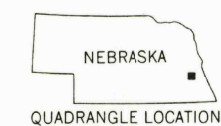
generally visible on aerial photographs. This information is unchecked

Revisions shown in purple compiled from aerial photographs

taken 1972. This information not field checked



THIS MAP COMPLIES WITH NATIONAL MAP ACCURACY STANDARDS  
FOR SALE BY U.S. GEOLOGICAL SURVEY, DENVER, COLORADO 80225, OR WASHINGTON, D. C. 20242  
A FOLDER DESCRIBING TOPOGRAPHIC MAPS AND SYMBOLS IS AVAILABLE ON REQUEST



GARLAND, NEBR.  
N4052.5—W9652.5/7.5

1964  
PHOTOREVISED 1972  
AMS 6665 IV NW—SERIES V875

FEB 22 1973

2210